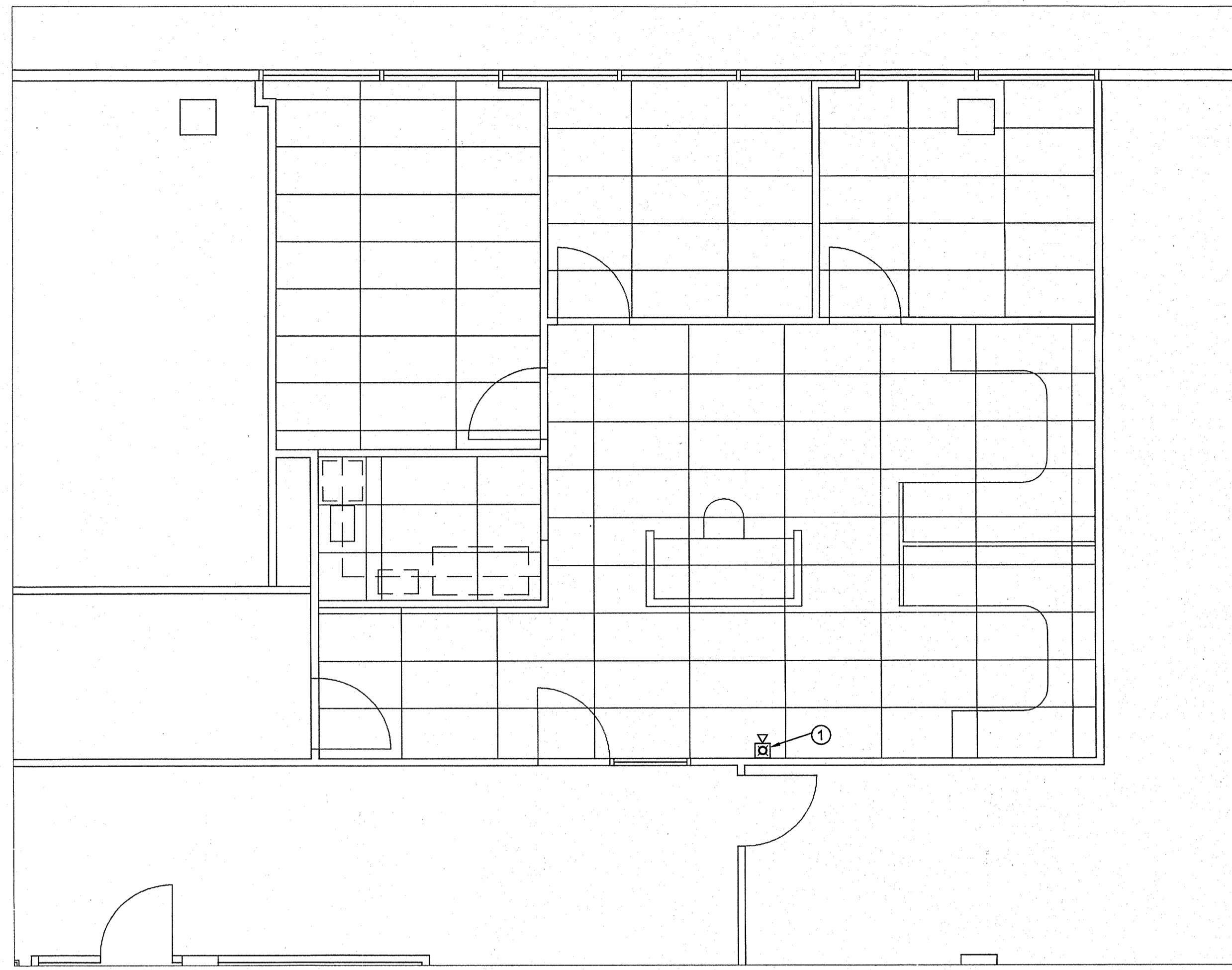


**01 PARTIAL FLOOR PLAN - FIRE ALARM DEMOLITION**  
SCALE: 1/4" = 1'-0"



**02 PARTIAL FLOOR PLAN - FIRE ALARM**  
SCALE: 1/4" = 1'-0"

**FIRE ALARM DEMOLITION NOTES BY SYMBOL '□':**

- 1 EXISTING FIRE ALARM HORN STROBE DEVICE ON WALL TO REMAIN AS IS.
- 2 EXISTING FIRE ALARM HORN STROBE DEVICE TO BE REMOVED ALONG WITH THE EXISTING JUNCTION BOX AND WIRING. (THIS WORK SHALL BE PERFORMED BY SIMPLEX GRINNELL UNDER THE DIRECTION OF THIS CONTRACTOR) PAID FOR BY THIS CONTRACTOR.

**FIRE ALARM NOTES BY SYMBOL 'O':**

- 1 EXISTING WALL MOUNTED FIRE ALARM HORN STROBE.

FIRE ALARM SYMBOLS	
SYMBOL	DESCRIPTION
[FCP]	FIRE ALARM CONTROL PANEL
[NAC]	NOTIFICATION APPLIANCE CIRCUIT EXTENDER
[ASD]	AREA SMOKE DETECTOR
[HDT]	HEAT DETECTOR
[DSM]	DUCT SMOKE DETECTOR
[MPS]	MANUAL PULL STATION-DOUBLE ACTION
[IAM]	INDIVIDUAL ADDRESSABLE MODULE-MONITOR MODULE
[SAS]	SPEAKER/STROBE NOTIFICATION APPLIANCE-CEILING MOUNT-WHITE
[SAS-W]	SPEAKER/STROBE NOTIFICATION APPLIANCE-WALL MOUNT-RED
[SAS-WH]	SPEAKER NOTIFICATION APPLIANCE-WALL MOUNT-WHITE
[SAS-CW]	SPEAKER NOTIFICATION APPLIANCE-CEILING MOUNT-WHITE
[SAS-CR]	STROBE NOTIFICATION APPLIANCE-CEILING MOUNT-RED
[SAS-WR]	STROBE NOTIFICATION APPLIANCE-WALL MOUNT-RED
[SWF]	SPRINKLER WATERFLOW SWITCH
[TAM]	SPRINKLER TAMPER SWITCH
[FPHJ]	FIRE FIGHTER PHONE JACK
[WP]	WEATHERPROOF (EXTERIOR RATED APPLIANCE)
[CD]	STROBE CANDELA

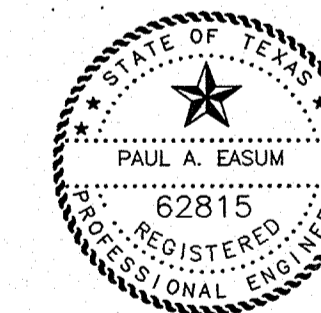
SYSTEM INPUTS	SYSTEM OUTPUTS										
	PANEL ALARM INDICATOR	PANEL TROUBLE INDICATOR	PANEL SUPERVISOR	ACTIVATE ALARM INDICATOR	2ND ALARM INDICATOR	ACTIVATE TROUBLE INDICATOR	ACTIVATE TROUBLE INDICATOR	ACTIVATE TROUBLE INDICATOR	ACTIVATE TROUBLE INDICATOR	ACTIVATE TROUBLE INDICATOR	ACTIVATE TROUBLE INDICATOR
MANUAL PULL STATIONS	X		X	X	X	X	X	X	X	X	X
SMOKE DETECTORS	X		X	X	X	X	X	X	X	X	X
DUCT SMOKE DETECTOR	X		X	X	X	X	X	X	X	X	X
HEAT DETECTOR	X		X	X	X	X	X	X	X	X	X
SPRINKLER WATERFLOW	X		X	X	X	X	X	X	X	X	X
SPRINKLER TAMPER		X				X					
AC POWER FAIL		X				X					
LOW BATTERY		X				X					
OPEN CIRCUIT		X		X	X						
SHORT CIRCUIT		X		X	X						
GROUND FAULT		X		X	X						

**SYSTEM OPERATING SEQUENCE**

GENERAL FIRE ALARM NOTES	
1.	ALL DEVICES AND WIRING SHALL BE INSTALLED PER APPLICABLE CODES AND STANDARDS.
2.	AREA SMOKE DETECTORS SHALL BE MOUNTED AT LEAST 3 FEET FROM ANY SUPPLY OR RETURN AIR DIFFUSER.
3.	CEILING HEIGHTS WHERE CEILING MOUNTED VISUAL INDICATING APPLIANCES OR HEAT DETECTORS ARE LOCATED SHALL NOT EXCEED 10 FEET A.F.F. UNLESS NOTED.
4.	ANY CONDUIT INSTALLED SHALL BE 3/4" E.M.T. UNLESS NOTED.
5.	ALL 120V A.C. CIRCUITS AND HIGHER VOLTAGE CIRCUITS SHALL BE PROVIDED BY THE ELECTRICAL CONTRACTOR.
6.	THE SLC CIRCUIT ON THIS PROJECT SHALL BE WIRED STYLE 6, "CLASS A".
7.	THE NOTIFICATION CIRCUITS ON THIS PROJECT SHALL BE WIRED STYLE Y, "CLASS B".
8.	ANY WIRING SHALL BE TESTED CLEAR OF CIRCUIT OPENS, SHORTS, AND GROUNDS BEFORE CONNECTING TO ANY PERIPHERAL OR PANEL EQUIPMENT.
9.	ALL EQUIPMENT INSTALLED SHALL BE 100% FUNCTIONALLY TESTED PRIOR TO SCHEDULING ANY FORMAL ACCEPTANCE TEST WITH THE OWNER.
10.	WALL MOUNTED STROBE INDICATING APPLIANCES SHALL BE MOUNTED WITH THE TOP OF THE LENS A MAXIMUM OF 96" A.F.F. AND THE BOTTOM OF THE LENS A MINIMUM OF 80" A.F.F.
11.	A SMOKE DETECTOR SHALL BE PROVIDED A MAXIMUM OF 5 FEET FROM EACH SMOKE OR FIRE/SMOKE DAMPER.
12.	SMOKE DETECTORS SHALL BE PROVIDED ON THE RETURN AND EXHAUST AIR DUCTS OF EVERY HVAC UNIT EXCEEDING 2,000 CFM.
13.	SMOKE DETECTORS SHALL BE PROVIDED AT EACH CONNECTION TO A RETURN AIR VERTICAL DUCT OR RISER SERVING TWO OR MORE STORIES.
14.	ARCHITECT TO REVIEW AND APPROVE STROBE LOCATIONS DURING SHOP DRAWING REVIEW.

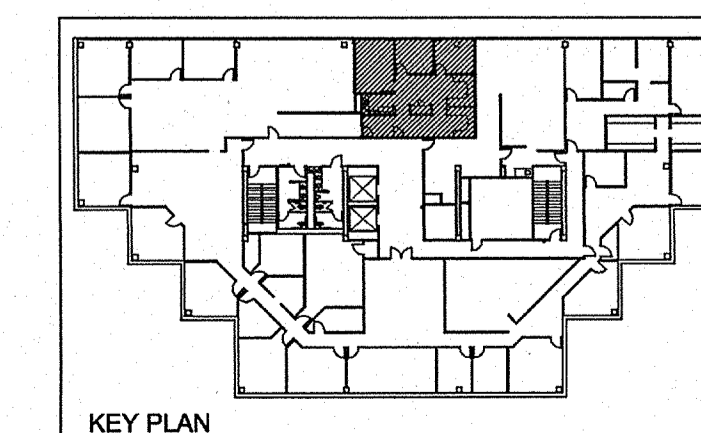
DESIGN CRITERIA	
CODES:	INTERNATIONAL FIRE CODE-2003 EDITION
	INTERNATIONAL BUILDING CODE-2003 EDITION
	INTERNATIONAL MECHANICAL CODE-2003 EDITION
	NFPA 70-2002 EDITION
	NFPA 72-2002 EDITION
	TEXAS ACCESSIBILITY STANDARDS
	CITY OF ARLINGTON, TX ADOPTED CODES AND STANDARDS
OCCUPANCY:	A-3, B
STORIES:	8 (HIGH RISE)
FIRE SPRINKLER:	FULLY SPRINKLER PROTECTED

THE SEAL APPEARING ON THIS DOCUMENT WAS AUTHORIZED BY PAUL A. EASUM ON APRIL 29, 2008. ALTERATIONS OF A SEALED DOCUMENT WITHOUT PROPER NOTIFICATION TO THE RESPONSIBLE ENGINEER IS AN OFFENSE UNDER THE TEXAS ENGINEERING PRACTICE ACT.



**EASUM ENGINEERING**

2740 State Hwy 276, Suite 100-03  
Rockwall, Texas 75087  
(972) 234-9911, FAX (972) 234-9922



KEY PLAN

REVISIONS:

REVISION 4-28-09

FILE:

PROJ: PWT-0703

DATE: 03-23-09

DWG BY: SH

CHK BY: PE

SHEET OF

FA1.00