

LIGHT FIXTURE SCHEDULE						
TYPE	DESCRIPTION	MANUFACTURER	MODEL NUMBER	LAMPS	VOLTAGE	INPUT WATTS/NOTES
A	2X4 LAY-IN FIXTURE 2-T8 LAMPS WITH STEP DIMMING OPTION	LSI	G19-232-SD-SSO-LM841	2-FO32T8	277	59 WATTS ①②④⑥
AE	SAME AS FIXTURE "A" EXCEPT WITH EMERGENCY BATTERY PACK	LSI	G19-232-SD-SSO-LM841	2-FO32T8	277	59 WATTS ①②④⑥⑦⑧
X	L.E.D. EXIT SIGN WITH ALUMINUM HOUSING SINGLE STENCIL FACE, BRUSHED ALUMINUM FINISH WITH RED DIFFUSER PANEL UNIVERSAL MOUNTING BRACKET AND NICAD BATTERY	BEGHELLI	ATX-SA-LRW	INCLUDED	277	1 WATTS ②③

GENERAL LIGHTING NOTES:

- FIXTURE SHALL PROVIDE MINIMUM 4" DEEP LAMP CAMBER. IMPACT MODIFIED ACRYLIC PRISMATIC REFRACTOR WITH POLYMER LIGHT DIFFUSING FILM, MITERED CORNERS, TEE HINGES, AND CAM LATCHES. ALL METAL SURFACES SHALL BE FINISHED AFTER FABRICATION IN BAKED WHITE ENAMEL OR POLYESTER POWDER COAT HAVING A 93 PERCENT OR GREATER REFLECTANCE HOUSING, AND DOORS SHALL INCORPORATE LIGHT TRAPS AND GASKETS TO PREVENT LIGHT LEAKS.
- PROVIDE FIXTURES WITH CEILING TRIM AND ACCESSORIES AS REQUIRED BY THE CEILING TYPES IN WHICH FIXTURES ARE LOCATED. VERIFY ALL CEILING TYPES IN WHICH FIXTURES ARE LOCATED. VERIFY ALL CEILING TYPES ON ARCHITECTURAL DRAWINGS.
- INSTALL BACK MOUNT, END MOUNT, OR TOP MOUNT AS REQUIRED BY EXIT LOCATION. ALL MOUNTING OUTLET BOXES SHALL BE RIGIDLY SECURED IN WALL AND/OR CEILING CONSTRUCTION.
- SEE ARCHITECTURAL DRAWINGS FOR EXACT MOUNTING ARRANGEMENT. VERIFY MOUNTING HEIGHT BEFORE ROUGH-IN.
- PROVIDE FIXTURES COMPLETE WITH PLASTER FRAME, BAR HANGERS, AND REQUIRED MOUNTING ACCESSORIES. SECURE MOUNTING TO ADJACENT CEILING STRUCTURE USING BAR CLIPS AND OTHER APPROVED ACCESSORIES.
- WHERE TWO LEVEL SWITCHING IS INDICATED, PROVIDE STEP DIMMING BALLASTS, WITH ONE SWITCH CONTROLLING ONE LAMP AND THE OTHER SWITCH CONTROLLING ONE LAMPS.
- PROVIDE AN UNSWITCHED CONDUCTOR TO FIXTURES WITH AN EMERGENCY BATTERY PACK.
- INSTALL BATTERY PACK TEST SWITCH ADJACENT FIXTURE LOCATED AS APPROVED BY THE ARCHITECT.

ELECTRICAL LEGEND	
SYMBOL	DESCRIPTION
	RACEWAY IN WALL ABOVE CEILING
	HOME RUN, LETTER DENOTES PANEL NUMBER DENOTES CIRCUIT
	RACEWAY IN OR BELOW FLOOR
	FIRE ALARM SYSTEM RACEWAY IN WALL ABOVE CEILING
	SINGLE POLE WALL SWITCH
	THREE-WAY WALL SWITCH
	FOUR-WAY WALL SWITCH
	WALL DIMMER SWITCH
	MOTOR RATED SWITCH
	KEYED WALL TOGGLE SWITCH
	WALL TOGGLE SWITCH WITH PILOT LIGHT
	WEATHER PROOF DEVICE
	125V GROUNDING DUPLEX RECEPTACLE
	125V SIMPLEX RECEPTACLE
	250V, 3 WIRE RECEPTACLE
	250V, 50 AMP, 3 WIRE RECEPTACLE
	RECEPTACLE MOUNTED ABOVE COUNTER
	QUADRUPLEX RECEPTACLE
	GROUND FAULT INTERRUPT DEVICE
	ISOLATED GROUND DUPLEX RECEPTACLE
	WALL MOUNTED EXIT SIGN - TYPE NOTED
	CEILING MOUNTED SINGLE FACE EXIT SIGN - TYPE NOTED
	CEILING MOUNTED DOUBLE FACE EXIT SIGN - TYPE NOTED
	WALL MOUNTED EMERGENCY FIXTURE - TYPE NOTED
	CEILING MOUNTED MOTION DETECTOR

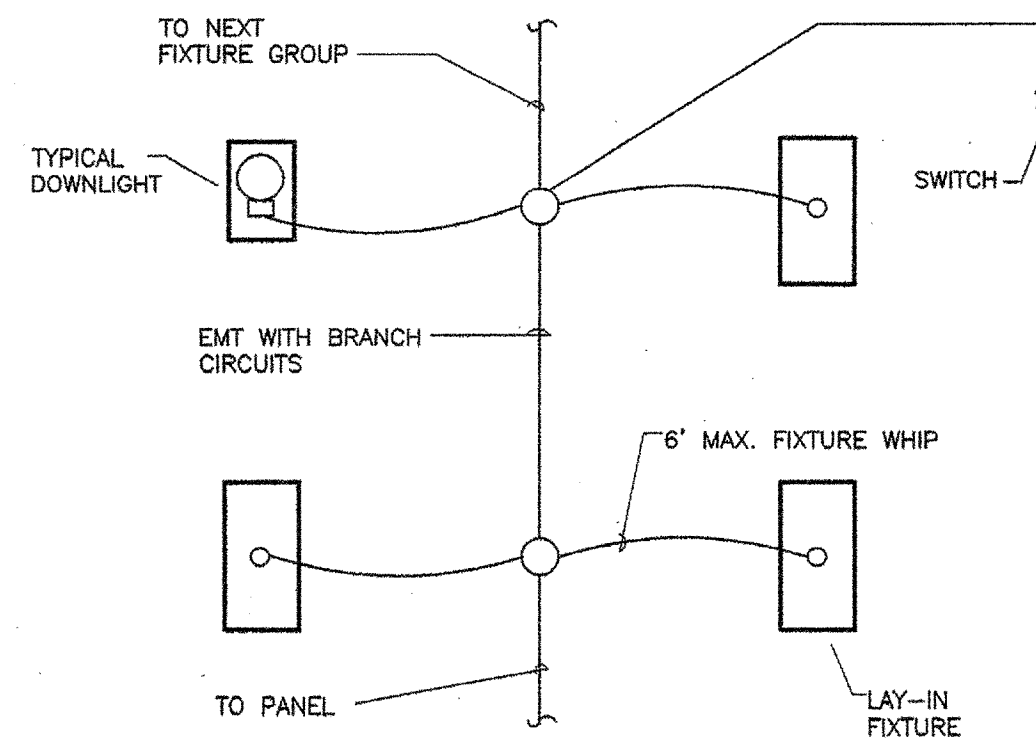
NOTE: NOT ALL SYMBOLS SHOWN ARE NECESSARILY USED

ELECTRICAL LEGEND	
SYMBOL	DESCRIPTION
	MOTOR LOCATION
	DIGITAL CLOCK
	BRANCH PANEL
	DISTRIBUTION PANEL
	FIRE ALARM MANUAL STATION
	FIRE ALARM HORN/STROBE ASSEMBLY
	CEILING MOUNT SMOKE DETECTOR (NO. DENOTES ZONE)
	DUCT MOUNT SMOKE DETECTOR
	CEILING MOUNT HEAT DETECTOR
	FIRE ALARM CONTROL PANEL
	WALL DATA OUTLET
	TELEPHONE OUTLET
	VOICE/DATA OUTLET
	WALL CLOCK OUTLET
	CEILING LIGHTING OUTLET - LETTER DENOTES FIXTURE TYPE
	WALL LIGHTING OUTLET - LETTER DENOTES FIXTURE TYPE
	FIRE ALARM STROBE LIGHT
	125V PLUG STRIP
	POWER/DATA SURFACE RACEWAY
	DISCONNECT SWITCH
	WALL OUTLET W/FLUSH COVERPLATE
	TELEVISION OUTLET
	CEILING SPEAKER
	VOICE/DATA OUTLET IN FLOOR
	QUADRUPLEX FLOOR OUTLET

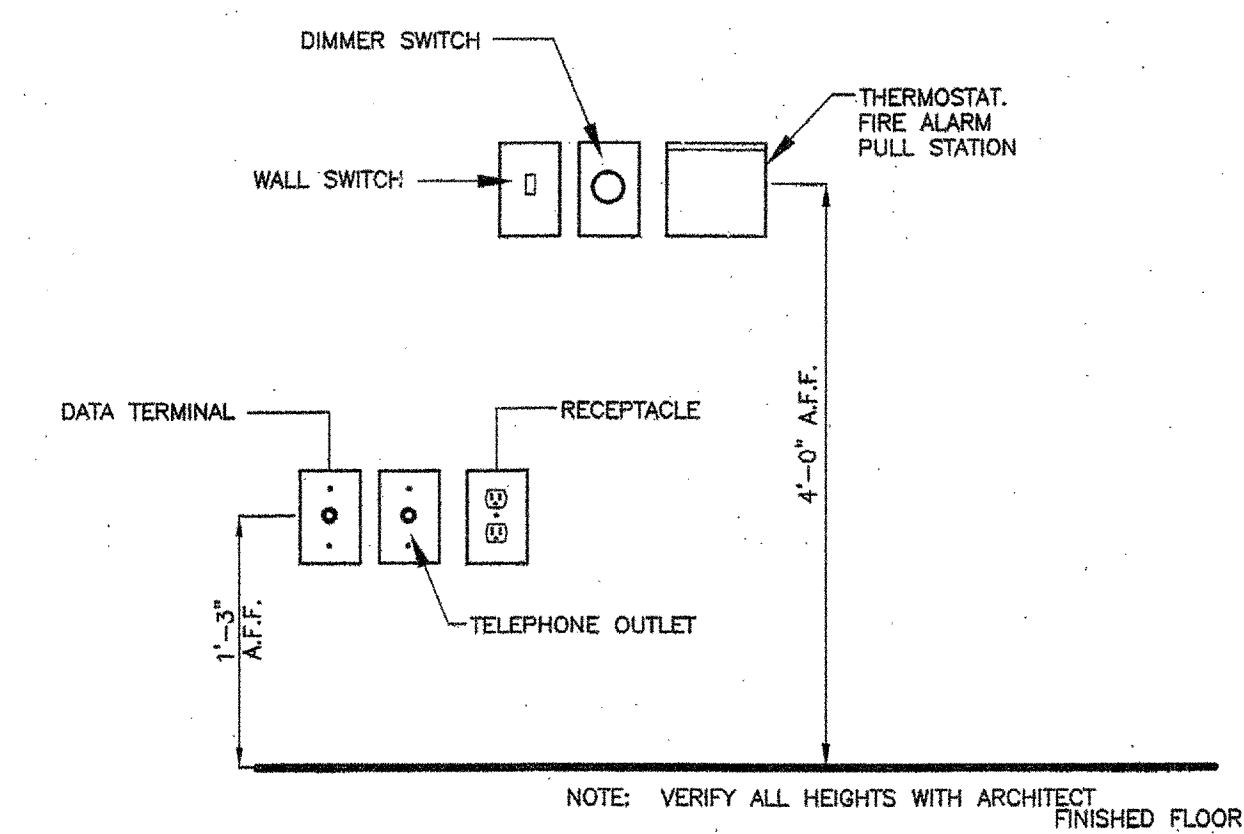
NOTE: NOT ALL SYMBOLS SHOWN ARE NECESSARILY USED

NOT USED

01 TYPICAL DATA / TELEPHONE DETAIL
NOT TO SCALE



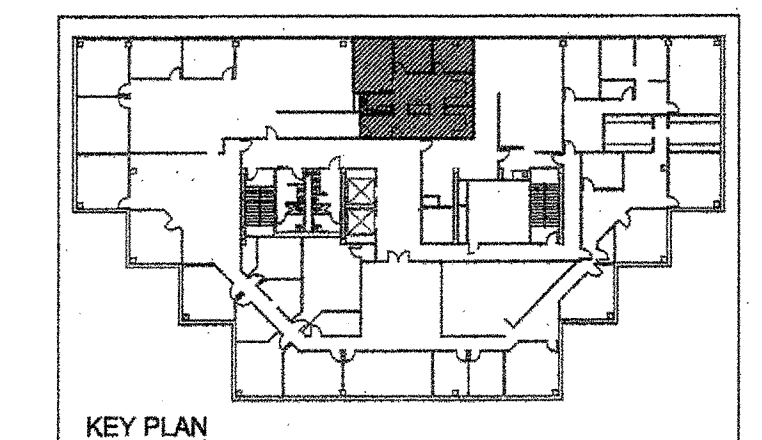
02 TYPICAL FIXTURE WIRING DETAIL
NOT TO SCALE



03 WIRING DEVICE MOUNTING HEIGHTS - TYPICAL
NOT TO SCALE

Paul A. Esam
PAUL A. ESAM
REGISTERED PROFESSIONAL ENGINEER
62815
STATE OF TEXAS
3/23/09

EASUM ENGINEERING
2740 State Hwy 278, Suite 100-03
Rockwall, Texas 75087
(972) 234-9911, FAX (972) 234-9922



DEPARTMENT OF PUBLIC WORKS
AND TRANSPORTATION
CONSTRUCTION MANAGEMENT DIV.
ARLINGTON, TEXAS



8TH FLOOR OFFICE REMODELING
CITY TOWER BUILDING
101 SOUTH MESQUITE STREET
ARLINGTON, TEXAS 76010

REVISIONS:

FILE:
PROJ: PWT-0703
DATE: 03-23-09
DWG BY: SH
CHK BY: PE

SHEET OF
E2.00