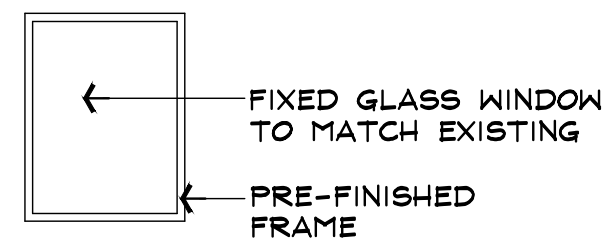


ROOM FINISH SCHEDULE

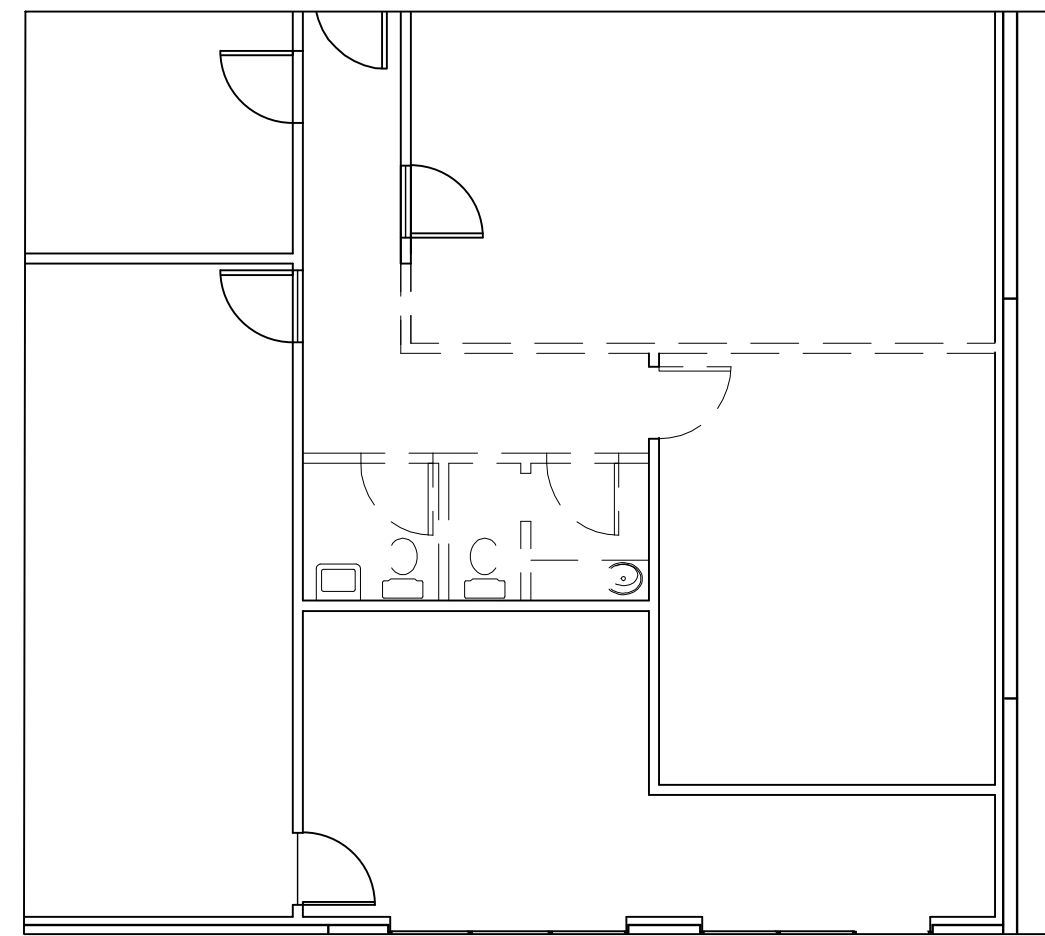
ROOM #	ROOM NAME	FLOOR	BASE	WALL REFERENCE MATERIAL KEYS				CEILING		MILLWORK			DOORS		REMARKS
				NORTH	EAST	SOUTH	WEST	HEIGHT	MATERIAL	MILLWORK	COUNTER	WINDOWS	DOOR	FRAME	
101	OPEN OFFICE	A/E	C	K	K	K	K/N		Q				U	U	
102	OFFICE	A	C	K	K	K	K/N		Q				U	U	
103	OFFICE	A	C	K	K	K	K		Q				U	U	
104	CORRIDOR	A/B	C	K	K	K	K		Q				U	U	
105	OFFICE	A	C	K	K	K	K		Q				U	U	
106	OFFICE	A	C	K	K	K	K		Q				U	U	
107	NOT USED														
108	OFFICE	A	C	K	K	K	K		Q				U	U	
109	STORAGE	A	C	K	K	K	K		Q				U	U	
110	CORRIDOR	B	C	K	K	K	K		Q				U	U	
111	OFFICE	A	C	K	K	K	K/N		Q				U	U	
112	BREAK ROOM	B	C	K	K	K	K		Q				U	U	
113	RESTROOM	B	C	K	K	K/R	K/R		Q				U	U	
114	JANITOR	B	C	K/R	K	K	K/R		Q				U	U	
115	STORAGE	B	C	K	K	K	K		Q				U	U	
116	CORRIDOR	B	C	K	K	K	K		Q				U	U	
117	MEN'S RR	B	C	K	K	K/R	K/R		Q				U	U	
118	WOMEN'S RR	B	C	K/R	K	K	K/R		Q				U	U	
119	EQUIPMENT	A	C	K	K	K	K		Q				U	U	
120	OFFICE	B	C	K	K	K	K		Q				U	U	
121	WAREHOUSE	U	U												

MATERIAL KEY

A	CARPET
B	VCT
C	RUBBER COVE BASE
D	NOT USED
E	CERAMIC TILE FLOORING
F	NOT USED
G	NOT USED
H	WOOD BASE-1 X 6 PAINTED
J	GYP. BD.-TAPE ONLY
K	EXISTING GYP. BD.- PT.
L	GYP. BD. - TAPE, BED & PT.
M	MINI BLINDS
N	GLASS STOREFRONT
P	EXIST'G. ACOUSTICAL TILE
Q	2X4 ACOUSTICAL TILE
R	FRP - 4' HIGH
S	NOT USED
T	PLASTIC LAMINATE
U	EXISTING CONDITION
V	PRE-FIN. STAINED WOOD
W	METAL - PREFINISHED

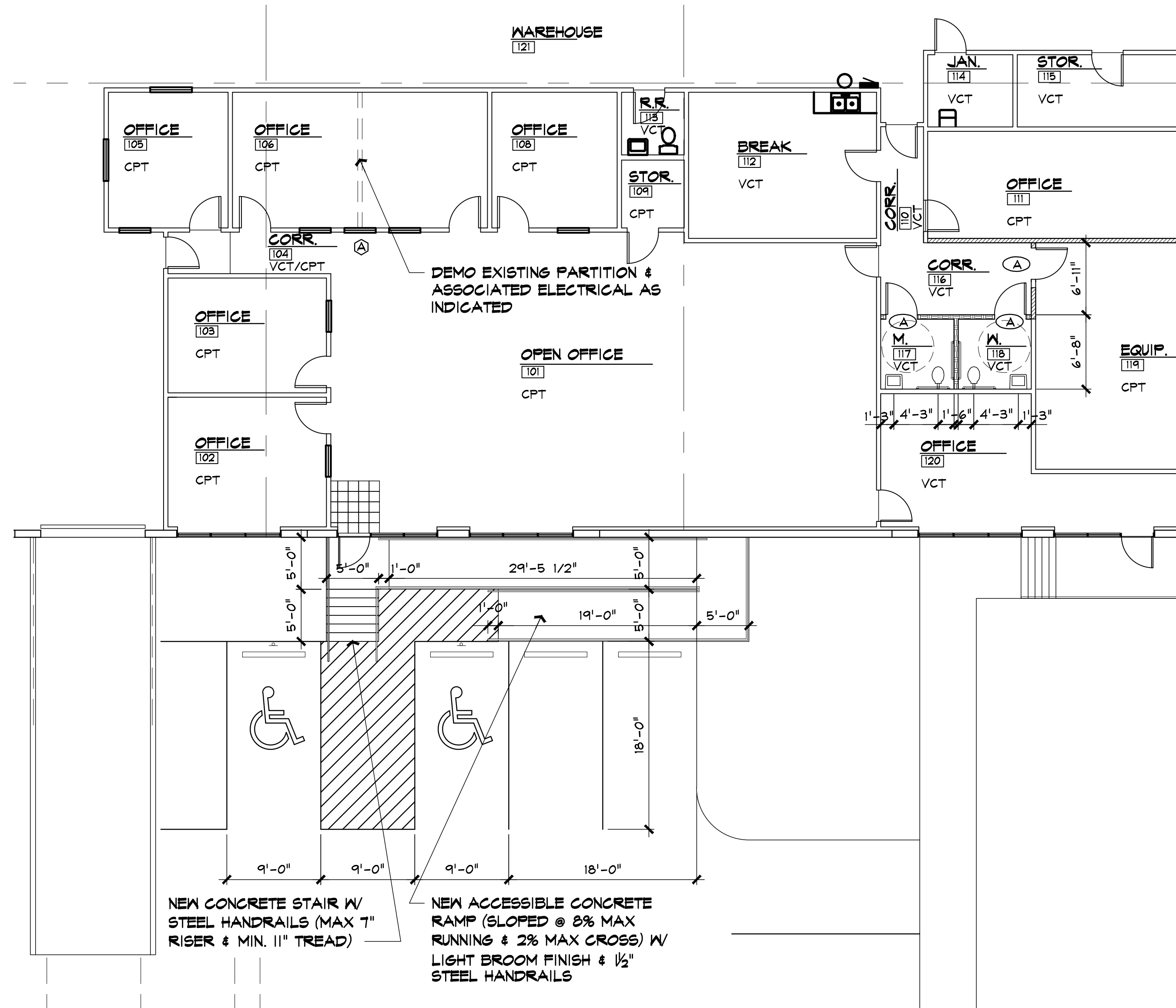


A



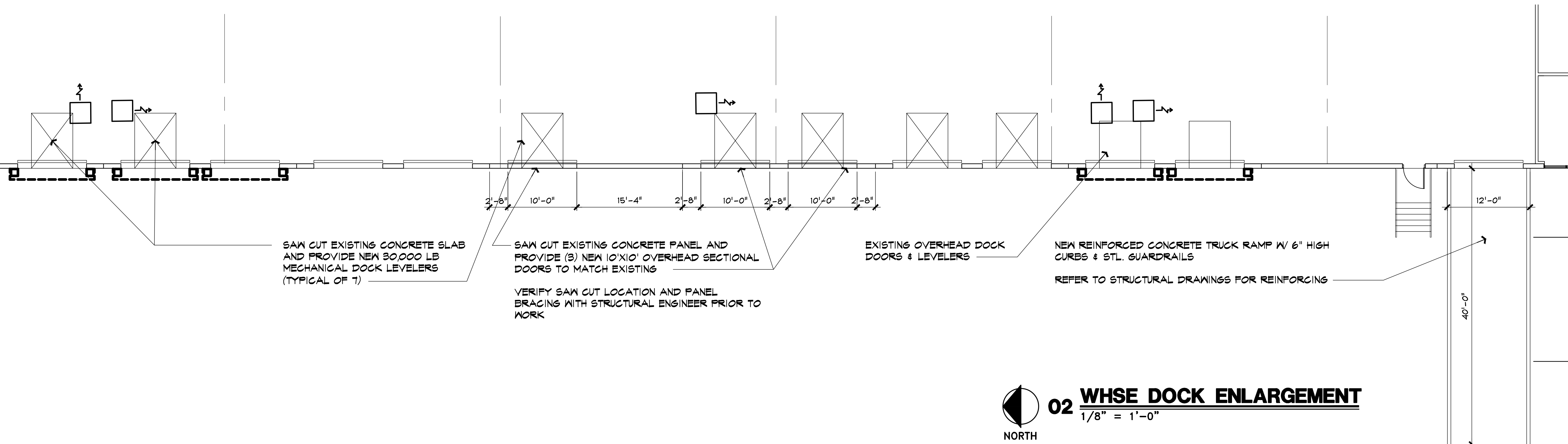
01 PARTIAL DEMO PLAN
1/8" = 1'-0"

NORTH



01 OFFICE PLAN
1/8" = 1'-0"

NORTH



02 WHSE DOCK ENLARGEMENT
1/8" = 1'-0"

NORTH

TAO TAO USA, INC.-ALTERNATE TRINITY MILLS DISTRIBUTION CENTER 3
2425 CAMP AVENUE, SUITE 1000
CARROLLTON, TEXAS

This drawing has been reviewed and approved by Landlord and Customer as indicated by signatures below. All changes made by customer after date of signature are at Customer's expense.

Landlord _____ Date _____

Customer _____ Date _____

PROJECT NO. XX-XXX

SHEET TITLE

DRAWN BY: _____ CHECKED BY: _____



2310 LBJ Freeway, Suite 20C
Dallas, Texas 75234
Phone: 972-884-9292
Fax: 972488-9848