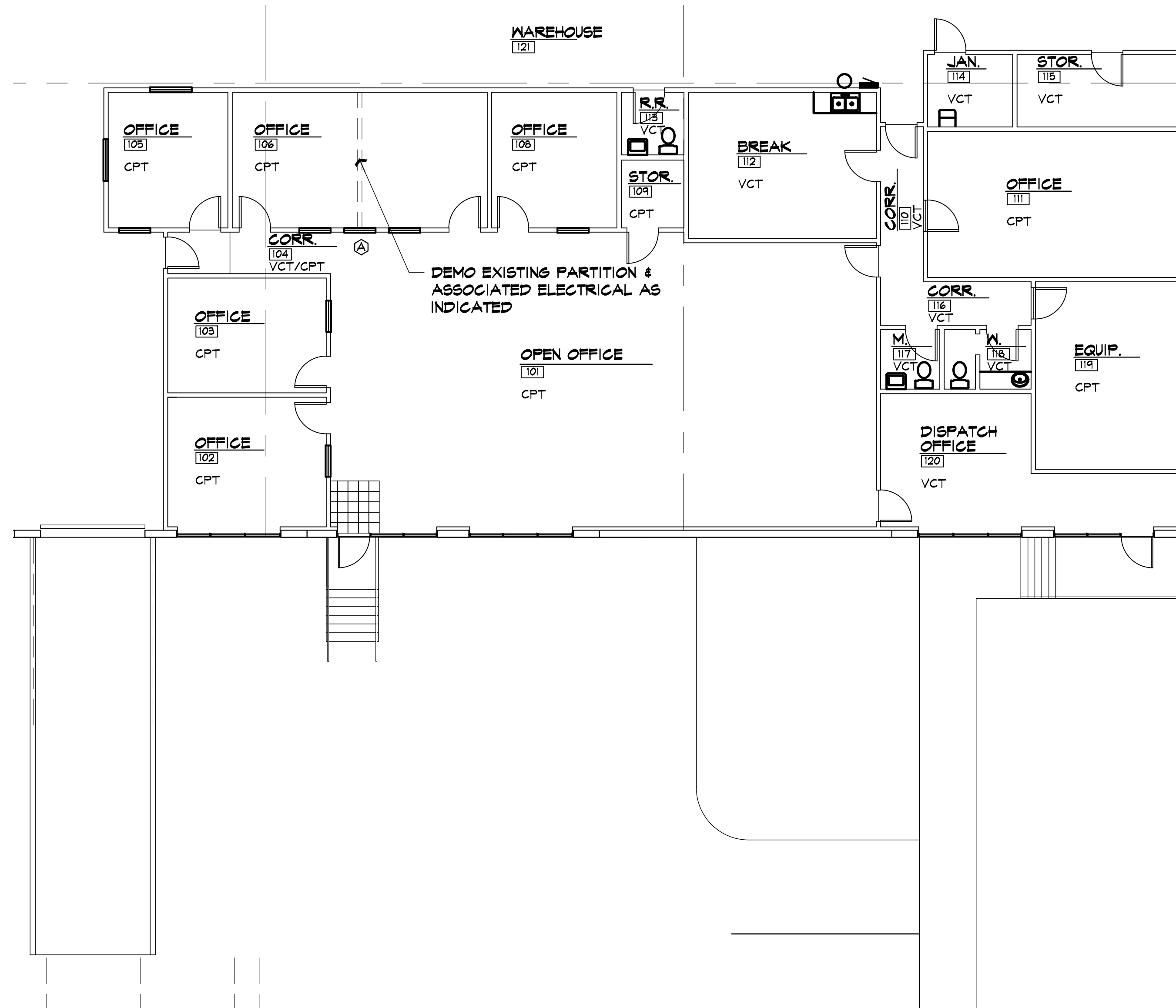
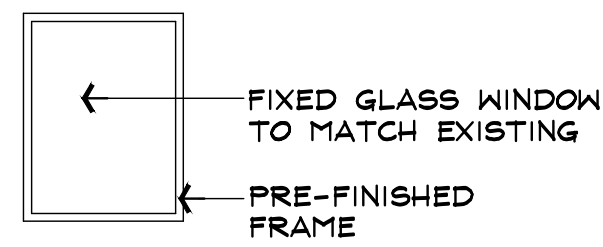


ROOM FINISH SCHEDULE

| ROOM # | ROOM NAME | FLOOR | BASE | WALL REFERENCE MATERIAL KEYS | | | | CEILING | | MILLWORK | | | DOORS | | REMARKS |
|--------|-------------|-------|------|------------------------------|------|-------|------|---------|----------|----------|---------|---------|-------|-------|---------|
| | | | | NORTH | EAST | SOUTH | WEST | HEIGHT | MATERIAL | MILLWORK | COUNTER | WINDOWS | DOOR | FRAME | |
| 101 | OPEN OFFICE | A/E | C | K | K | K | K/N | | Q | | | | U | U | |
| 102 | OFFICE | A | C | K | K | K | K/N | | Q | | | | U | U | |
| 103 | OFFICE | A | C | K | K | K | K | | Q | | | | U | U | |
| 104 | CORRIDOR | A/B | C | K | K | K | K | | Q | | | | U | U | |
| 105 | OFFICE | A | C | K | K | K | K | | Q | | | | U | U | |
| 106 | OFFICE | A | C | K | K | K | K | | Q | | | | U | U | |
| 107 | NOT USED | | | | | | | | | | | | | | |
| 108 | OFFICE | A | C | K | K | K | K | | Q | | | | U | U | |
| 109 | STORAGE | A | C | K | K | K | K | | Q | | | | U | U | |
| 110 | CORRIDOR | B | C | K | K | K | K | | Q | | | | U | U | |
| 111 | OFFICE | A | C | K | K | K | K/N | | Q | | | | U | U | |
| 112 | BREAK ROOM | B | C | K | K | K | K | | Q | | | | U | U | |
| 113 | RESTROOM | B | C | K | K | K/R | K/R | | Q | | | | U | U | |
| 114 | JANITOR | B | C | K/R | K | K | K/R | | Q | | | | U | U | |
| 115 | STORAGE | B | C | K | K | K | K | | Q | | | | U | U | |
| 116 | CORRIDOR | B | C | K | K | K | K | | Q | | | | U | U | |
| 117 | MEN'S RR | B | C | K | K | K/R | K/R | | Q | | | | U | U | |
| 118 | WOMEN'S RR | B | C | K/R | K | K | K/R | | Q | | | | U | U | |
| 119 | EQUIPMENT | A | C | K | K | K | K | | Q | | | | U | U | |
| 120 | OFFICE | B | C | K | K | K | K | | Q | | | | U | U | |
| 121 | WAREHOUSE | U | U | | | | | | | | | | | | |

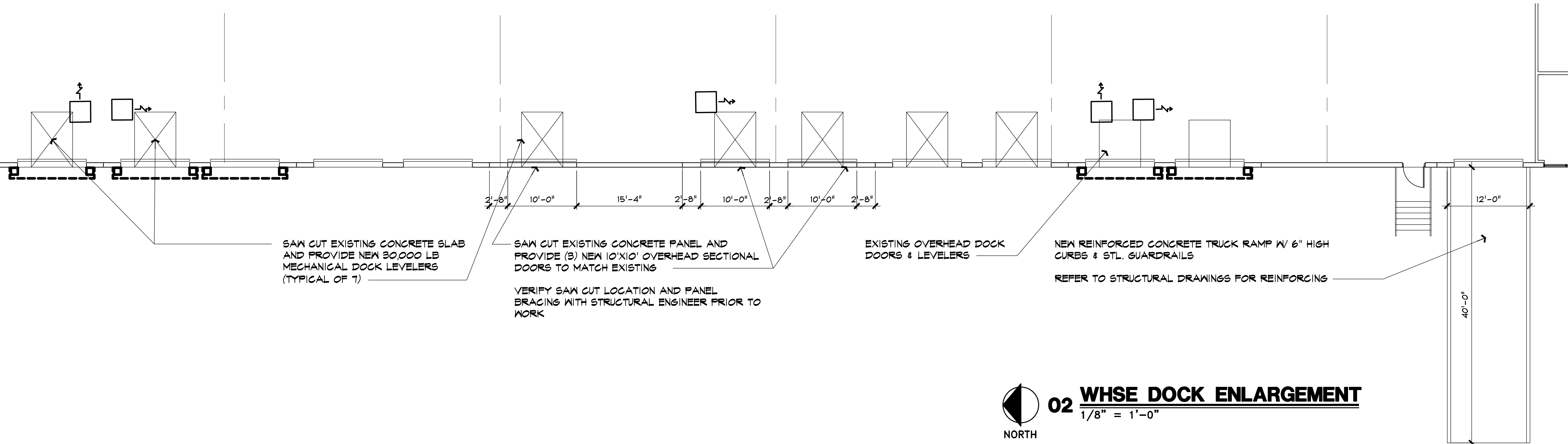
MATERIAL KEY

| | |
|---|----------------------------|
| A | CARPET |
| B | VCT |
| C | RUBBER COVE BASE |
| D | NOT USED |
| E | CERAMIC TILE FLOORING |
| F | NOT USED |
| G | NOT USED |
| H | WOOD BASE-1 X 6 PAINTED |
| J | GYP. BD.-TAPE ONLY |
| K | EXISTING GYP. BD.- PT. |
| L | GYP. BD. - TAPE, BED & PT. |
| M | MINI BLINDS |
| N | GLASS STOREFRONT |
| P | EXIST'G. ACOUSTICAL TILE |
| Q | 2X4 ACOUSTICAL TILE |
| R | FRP - 4' HIGH |
| S | NOT USED |
| T | PLASTIC LAMINATE |
| U | EXISTING CONDITION |
| V | PRE-FIN. STAINED WOOD |
| W | METAL - PREFINISHED |



01 OFFICE PLAN
1/8" = 1'-0"

NORTH



02 WHSE DOCK ENLARGEMENT
1/8" = 1'-0"

NORTH

SAW CUT EXISTING CONCRETE SLAB AND PROVIDE NEW 30,000 LB MECHANICAL DOCK LEVELERS (TYPICAL OF 7)

SAW CUT EXISTING CONCRETE PANEL AND PROVIDE (3) NEW 10'X10' OVERHEAD SECTIONAL DOORS TO MATCH EXISTING

VERIFY SAW CUT LOCATION AND PANEL BRACING WITH STRUCTURAL ENGINEER PRIOR TO WORK

EXISTING OVERHEAD DOCK DOORS & LEVELERS

NEW REINFORCED CONCRETE TRUCK RAMP W/ 6" HIGH CURBS & STL. GUARDRAILS

REFER TO STRUCTURAL DRAWINGS FOR REINFORCING

This drawing has been reviewed and approved by Landlord and Customer as indicated by signatures below. All changes made by customer after date of signature are at Customer's expense.

Landlord _____ Date _____

Customer _____ Date _____

PROJECT NO. XX-XXX

SHEET TITLE

DRAWN BY: _____ CHECKED BY: _____