

**PROJECT DIRECTORY**

CLIENT: YOUNAN PROPERTIES  
 9400 NORTH CENTRAL EXPRESSWAY  
 SUITE 1308  
 DALLAS, TX 75231  
 (214) 891-8080 (PH)  
 (214) 896-2628 (FAX)  
 CONTACT: LOUANN TURNER  
 EMAIL: lturner@younanproperties.com

BUILDING MANAGEMENT: YOUNAN PROPERTIES  
 9400 NORTH CENTRAL EXPRESSWAY  
 SUITE 1308  
 DALLAS, TX 75231  
 (214) 891-8080 (PH)  
 (214) 896-2628 (FAX)  
 CONTACT: LOUANN TURNER  
 EMAIL: lturner@younanproperties.com

ARCHITECT: FA SERVICES, INC.  
 325 NORTH ST. PAUL STREET  
 SUITE 2340  
 DALLAS, TX 75201  
 PHONE: (214) 988-5248  
 FAX: (214) 988-5247  
 CONTACT: GLENN ALMACK / LINDA McCALL  
 ARCHITECT: GLENN A. ALMACK, AIA  
 TEXAS LICENSE 14286

**PROJECT INFORMATION**

SITE ADDRESS: 9400 N. CENTRAL EXPRESSWAY, SUITE 1650  
 DALLAS, TX 75231

OCCUPANCY TYPE: TYPE B

SQUARE FOOTAGE: APPROXIMATELY: 1903 USF 2247 RSF

APPLICABLE BUILDING CODES: 2006 INTERNATIONAL BUILDING CODE W/ LOCAL AMENDMENTS  
 2006 INTERNATIONAL MECHANICAL CODE W/ LOCAL AMENDMENTS  
 2006 INTERNATIONAL PLUMBING CODE W/ LOCAL AMENDMENTS  
 2005 NATIONAL ELECTRICAL CODE W/ LOCAL AMENDMENTS  
 2006 INTERNATIONAL FIRE CODE W/ LOCAL AMENDMENTS  
 2006 INTERNATIONAL ENERGY CODE W/ 2006 AMENDMENTS  
 2003 EXISTING BUILDING CODE W/ LOCAL AMENDMENTS  
 TEXAS ACCESSIBILITY STANDARDS/ADA

FIRE PROTECTION: SPRINKLERED

SCOPE OF WORK: RENOVATION OF TENANT SPACE

**INDEX OF SHEETS**

ARCHITECTURAL

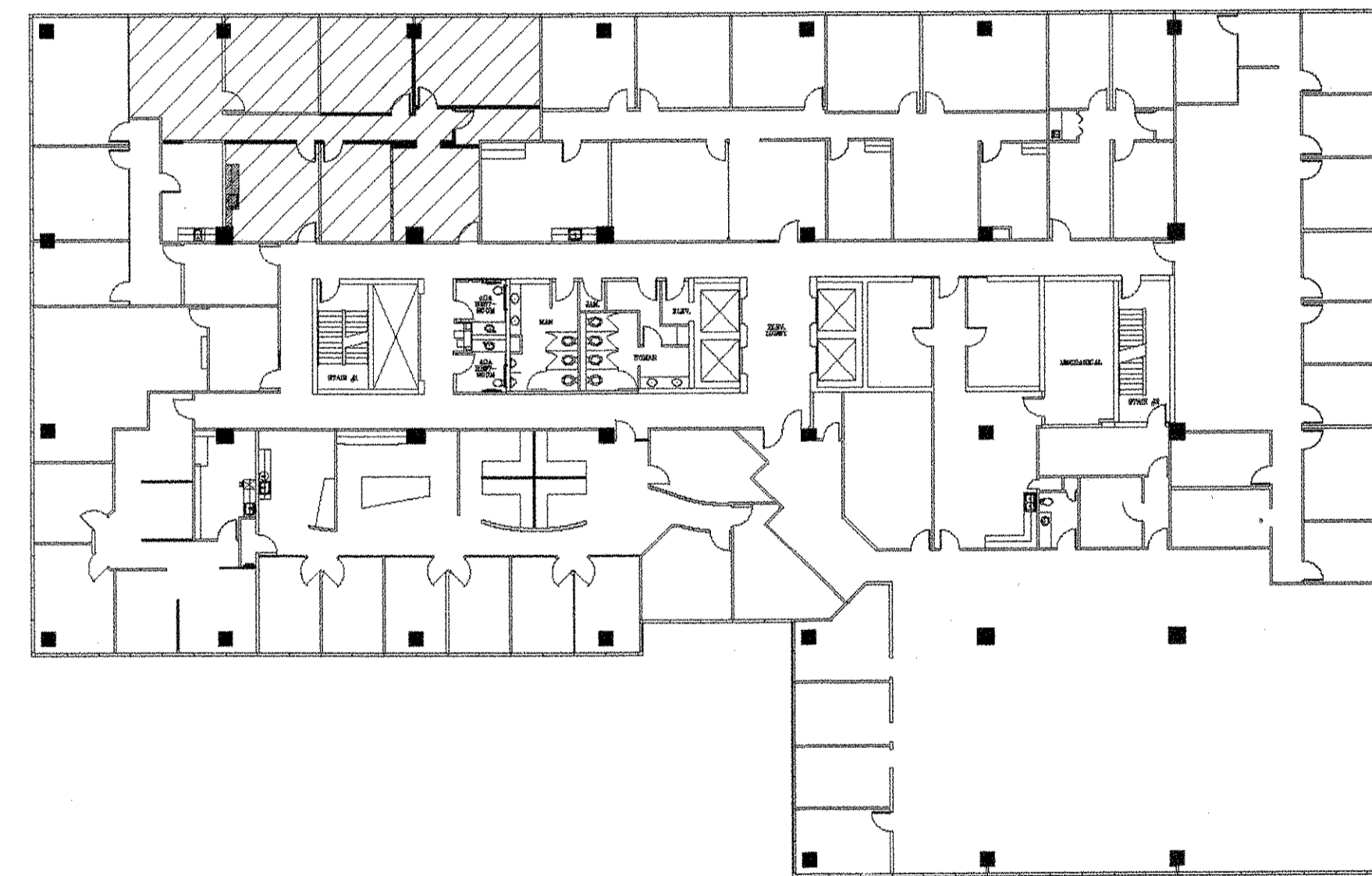
- AN-1.0 PROJECT INFORMATION SHEET
- 16A-0.0 DEMOLITION PLAN
- 16A-1.0 PARTITION PLAN
- 16A-2.0 POWER/SIGNAL PLAN
- 16A-3.0 REFLECTED CEILING PLAN
- 16A-4.0 FINISH PLAN
- 16A-7.0 ELEVATIONS - DETAILS

**SPEC SUITE  
 9400 NCX  
 9400 N. CENTRAL EXPY  
 SUITE 1650  
 DALLAS, TEXAS 75231**



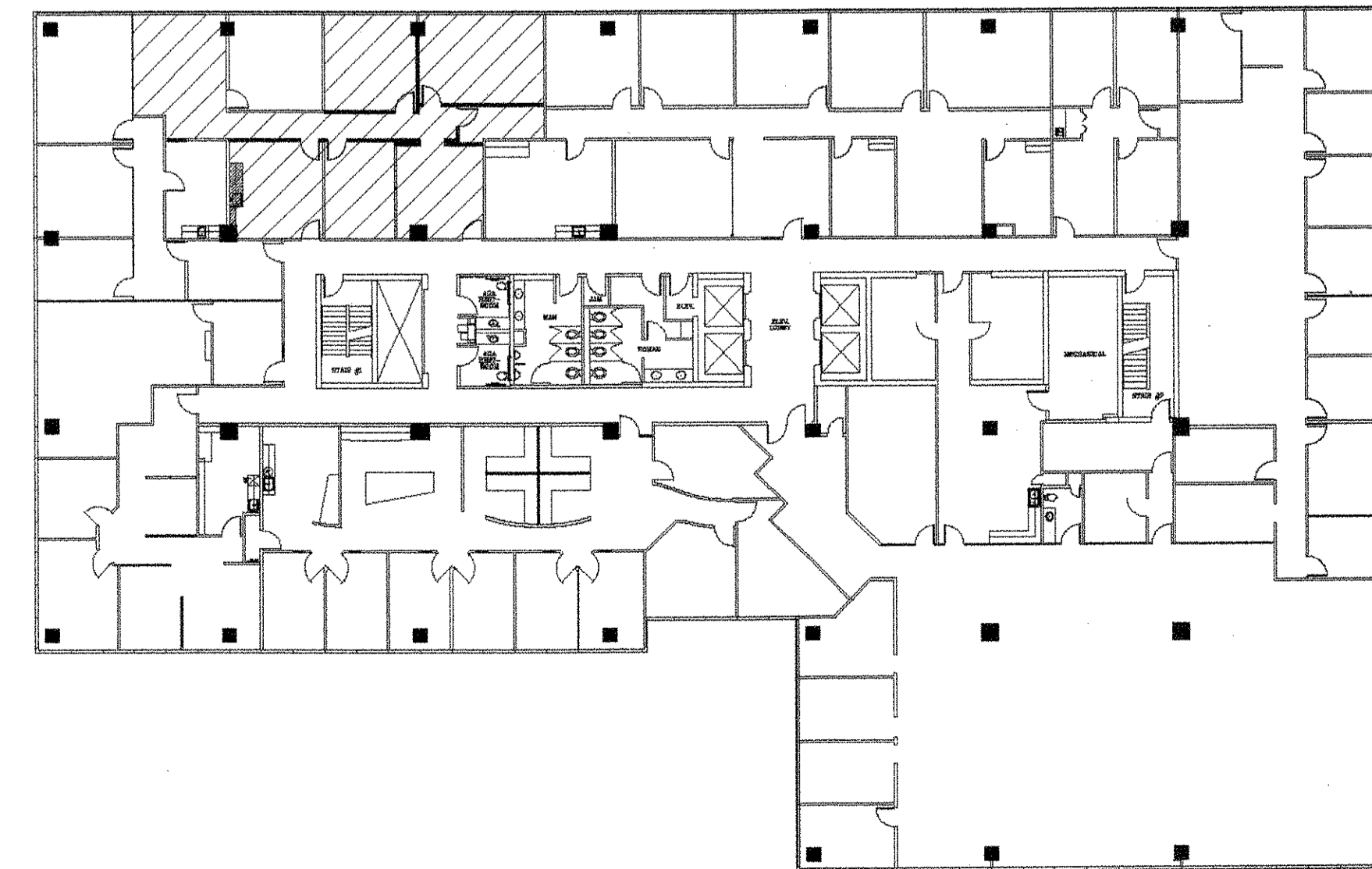
**KEY PLAN**

INDICATES AREA IN SCOPE OF WORK



**COMCHECK PLAN**

INDICATES AREA IN COMCHECK: 1,639 USF



1 ISSUED FOR CONSTRUCTION 08.20.2008

Issue Description Date



325 NORTH ST. PAUL STREET  
 SUITE 2340  
 DALLAS, TEXAS 75201  
 PHONE: 214.988.5428  
 FAX: 214.7988.5427

Drawn: LSM Check: GA Owner Approval:

Job No.: 08668.04 Scale: 1/8"=1'-0"

**PROJECT  
 INFORMATION  
 SHEET**

Title:

AN-1.0

Sheet:

