

A ELECTRICAL PLAN
SCALE: 1/8" = 1'-0"

ELECTRICAL NOTES: (NUMBERS IN DIAMONDS)

1. STD DUPLEX RECEPTACLE MTD 18" AFF UNLESS NOTED OTHERWISE
2. 120V, 20A GFI CC'T TO OUTLETS MTD 42" AFF
3. STD TELEPHONE/DATA OUTLET MTD 18" AFF UNLESS NOTED OTHERWISE - PROVIDE A RING AND A STRING
4. STD QUAD OUTLET MTD 18" AFF UNLESS NOTED OTHERWISE
5. 120V, 20A, DED CC'T TO STD DUPLEX RECEPTACLE MTD 42" AFF - TYP OF (2)

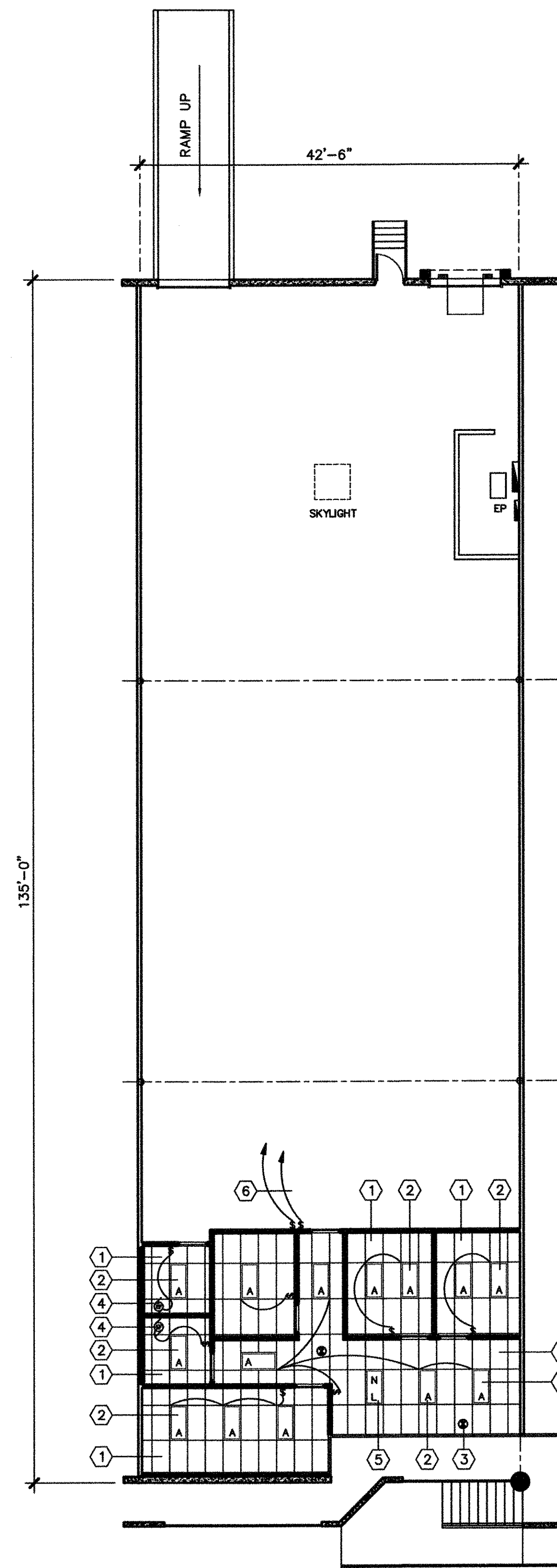
CEILING NOTES: (NUMBERS IN HEXAGONS)

1. PROVIDE 2'x4' LAY-IN GRID CL'G AND TILE MTD 9'0" AFF - PROVIDE R-19 FG BATT INSULATION ABOVE ALL CL'G TILES - CL'G GRID AND TILE TO MATCH BLDG STD - CL'G GRID TO BE CONTINUOUS
2. 2'x4' LAY-IN FLUORESCENT FIXTURE W/ 3 T8 LAMPS, ELECTRONIC, HIGH FREQUENCY BALLAST, AND ACRYLIC LENS
3. SURFACE MTD, BATTERY POWERED, LED EXIT LIGHT
4. EXHAUST FAN, VENTED TO THE OUTSIDE, TO BE SWITCHED W/ THE LIGHT
5. EXHAUST FAN TO PROVIDE A MINIMUM OF 75 CFM - TYP IN EACH RESTROOM
6. 2'x4' LAY-IN FLUORESCENT FIXTURE W/ 3 T8 LAMPS, ELECTRONIC, HIGH FREQUENCY BALLAST, AND ACRYLIC LENS ON NIGHT LIGHT CC'T
6. PROVIDE NEW SWITCH LEGS FOR EXISTING LIGHT FIXTURES IN WAREHOUSE - ELECTRICAL CONTRACTOR TO DETERMINE EXACT NUMBER OF SWITCHES REQ'D RELAMP AND REBALLAST EXISTING WAREHOUSE LIGHTS AS REQ'D - ALL WAREHOUSE LIGHTS TO BE BURNING

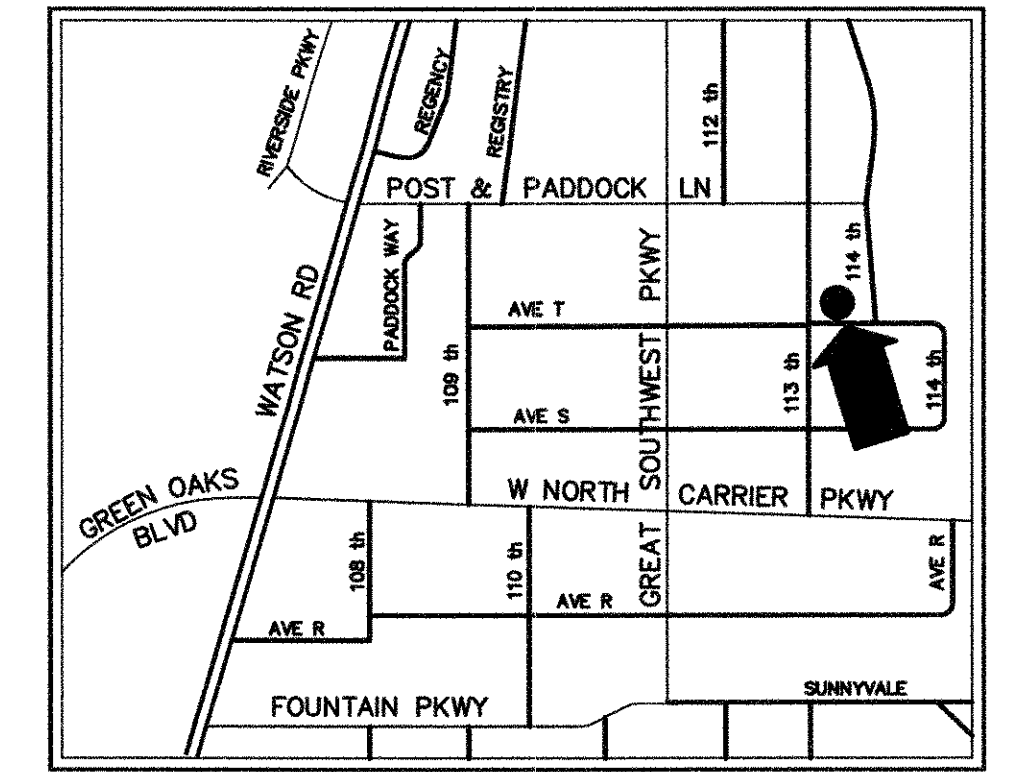
NOTE: SWITCHES IN ALL NEW ROOMS TO BE MOTION ACTIVATED EXCEPT IN RECEPTION

LUMINAIRE SCHEDULE:

SYMBOL	LABEL	QUANTITY	DESCRIPTION	WATTS/FIXTURE	TOTAL WATTS
□	A	15	2x4 GT8 T-8 TROFFER, 3 LAMP FIXTURE W/ ELECTRONIC, HIGH FREQUENCY BALLAST	96	1,275
●	B	2	SURFACE MTD LED EXIT LIGHT	0.92	2.0
				TOTAL	1,277



B REFLECTED CL'G PLAN
SCALE: 1/8" = 1'-0"

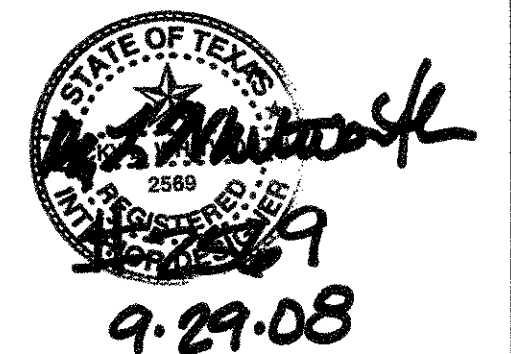


LOCATION MAP

BUILDING FEATURES

- 18' Clear Height
- 100% A/C Warehouse
- (1) 8'x10' OH Dock Doors
- (2) 8'x10' OH Doors w/ Ramp
- (6) Dock Levelers
- (1) Dock Seal
- Easy Access to Major Thoroughfares
- Professionally Landscaped
- Ample Parking

1475 AVE S
SUITE #301
GRAND PRAIRIE, TX



BUILDING SUMMARY

OFFICE	1,079 SF
WAREHOUSE	4,658 SF
TOTAL	5,737 SF

DIVIDEND CAPITAL TRUST
5420 LBJ FREEWAY SUITE 680 DALLAS, TX 75240
(972)-982-8500 Fax (972) 982-8551