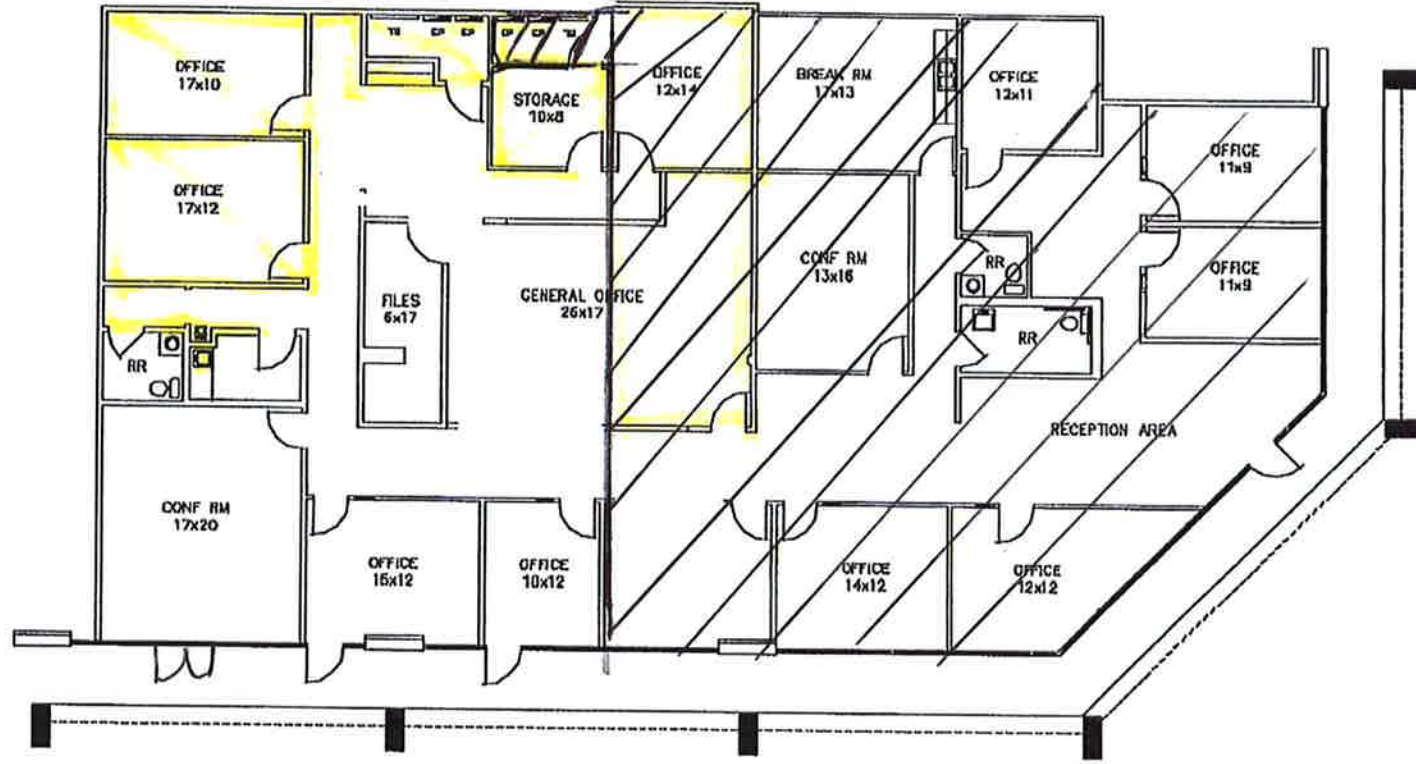


Existing Floor Plan

STE 260 ↓

ste 300



LOCATION MAP

BUILDING FEATURES

- Professionally Landscaped
- Easy Access to Major Thoroughfares
- Security Lighting
- Ample Parking

1313 VALWOOD PARKWAY
SUITE 300
DALLAS, TX

BUILDING SUMMARY

OFFICE	5,023 SF
TOTAL	5,023 SF



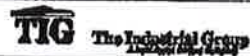
2412 N. Stemmons Road, Suite 1200, Carrollton, Texas 75009
(972) 481-0222 Fax (972) 481-0226



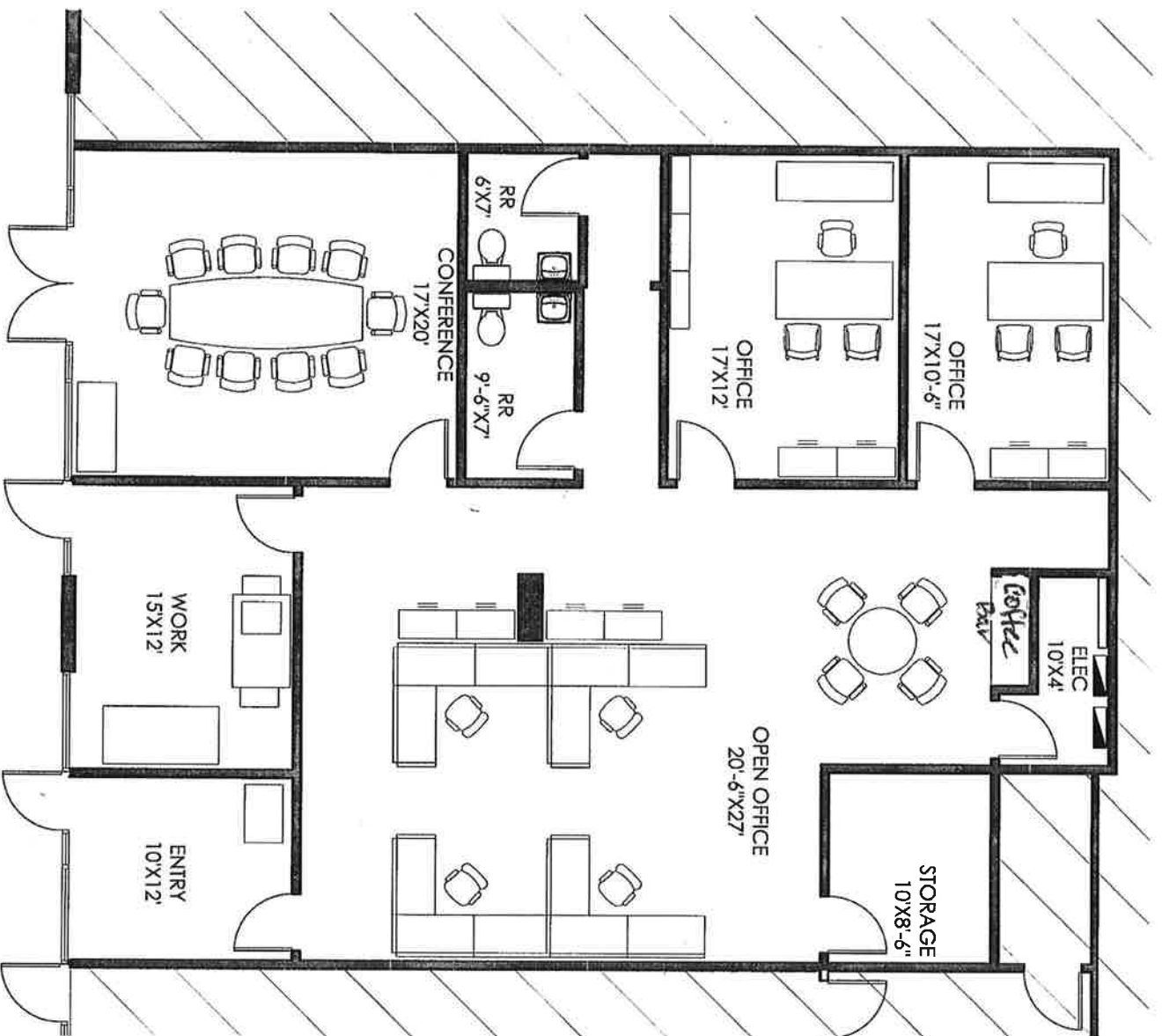
FLOOR PLAN



--	--	--	--	--



Drawn	04/17/20			



DCT INDUSTRIAL
Z Projects, LLC

1313 VALWOOD
DALLAS, TX

SPEC. SUITE 260
SPACE PLAN # 1: 1/8"=1'-0"



01.20.20