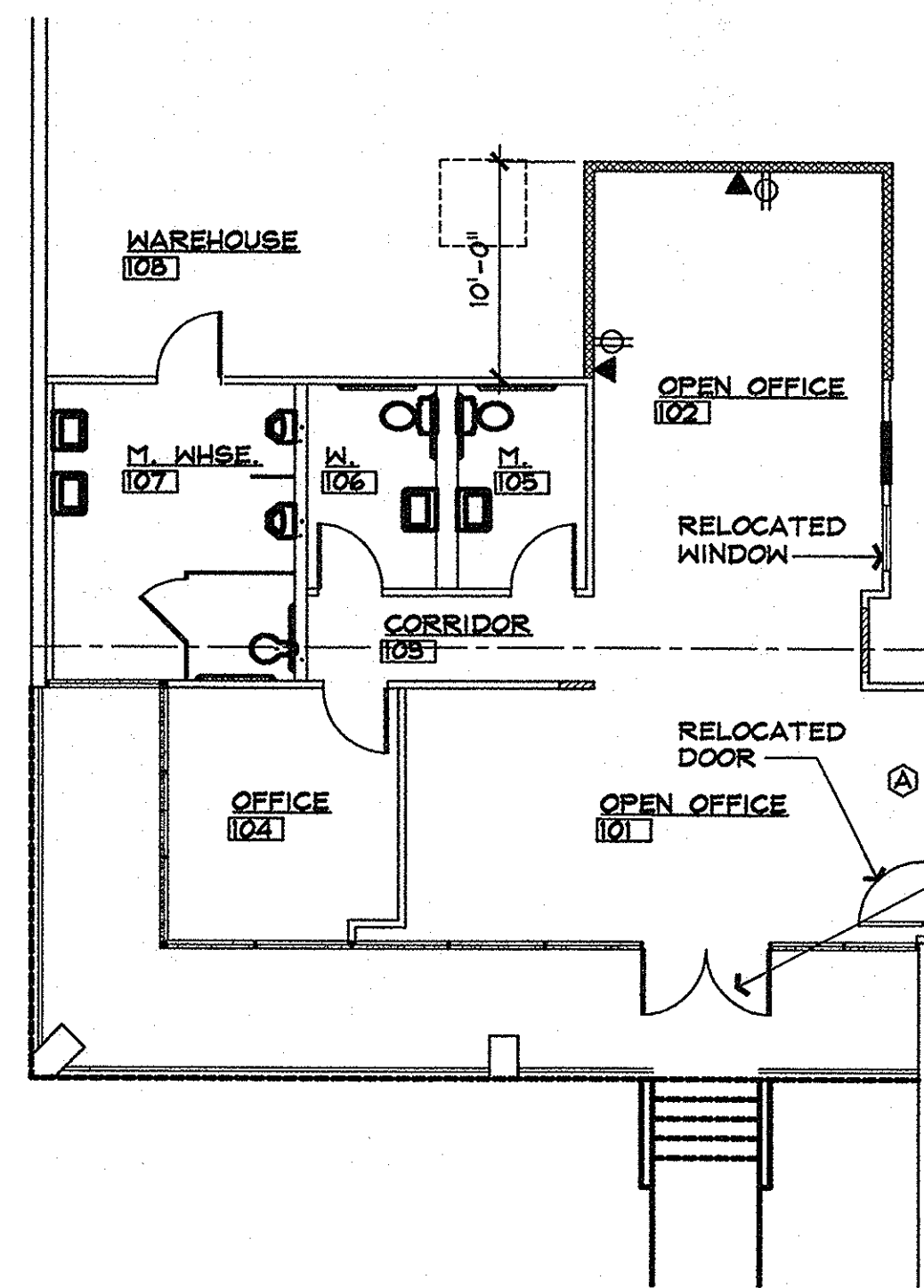
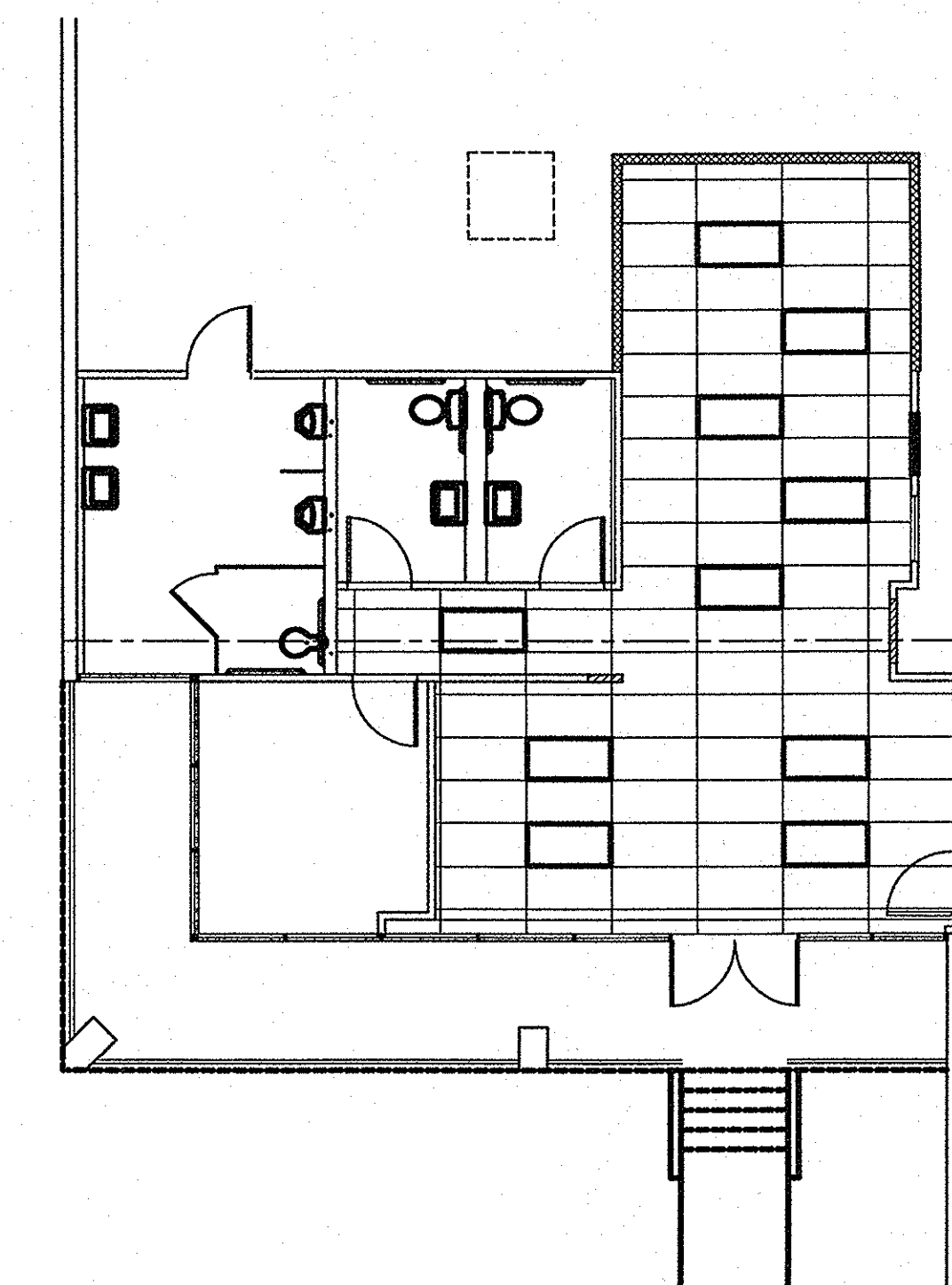


01 OFFICE DEMO PLAN
 1/8" = 1'-0"
 NORTH



02 OFFICE PLAN
 1/8" = 1'-0"
 NORTH



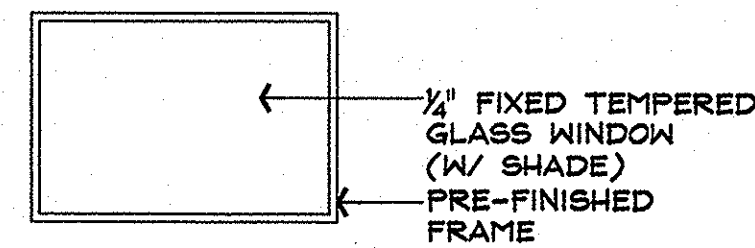
03 OFFICE RCP
 1/8" = 1'-0"
 NORTH

ROOM FINISH SCHEDULE

ROOM #	ROOM NAME	FLOOR	BASE	WALL REFERENCE MATERIAL KEYS				CEILING		MILLWORK	COUNTER	WINDOWS	DOORS		REMARKS
				NORTH	EAST	SOUTH	WEST	HEIGHT	MATERIAL				DOOR	FRAME	
101	OPEN OFFICE	B	C	J/K	K	K/N	K	9'-0"	Q		M	U	U	EXIST'G DOOR '101' RELOCATED	
102	OPEN OFFICE	B	C	J	J/K	-	J/K	9'-0"	Q			-	-	EXIST'G WINDOW 'A' RELOCATED	
103	CORRIDOR	B	C	K	-	K	K	9'-0"	Q			-	-		
104	OFFICE	A	C	K	K	K/N	K/N	9'-0"	Q		M	U	U		
105	MEN'S RR	B	C	K/R	K	K/R	K	9'-0"	Q			U	U		
106	WOMEN'S RR	B	C	K/R	K/R	K	K	9'-0"	Q			U	U		
107	MEN'S WHSE. RR	B	C	K	K/R	K/R	K	9'-0"	Q			U	U		
108	WAREHOUSE	U	H	-	-	L	L	9'-0"	Q			U	U		

MATERIAL KEY

A	CARPET
B	VCT
C	RUBBER COVE BASE
D	NOT USED
E	CERAMIC TILE FLOORING
F	NOT USED
G	NOT USED
H	WOOD BASE-1 X 6 PAINTED
J	GYP. BD.-TAPE,BED, TXT & PT.
K	EXIST'G GYP. BD.-PT.
L	GYP. BD. - TAPE, BED & PT.
M	MINI BLINDS
N	GLASS STOREFRONT
P	EXIST'G. ACOUSTICAL TILE
Q	2X4 ACOUSTICAL TILE
R	FRP - 4' HIGH
S	NOT USED
T	PLASTIC LAMINATE
U	EXISTING CONDITION
V	PRE-FIN. STAINED WOOD
W	METAL - PREFINISHED



A

This drawing has been reviewed and approved by Landlord and Customer as indicated by signatures below. All changes made by customer after date of signature are at Customer's expense.

Landlord _____ Date _____

Customer _____ Date _____

PROJECT NO. XX-XXX

SHEET TITLE:

DRAWN BY: _____ CHECKED BY: _____



2310 LBJ Freeway, Suite 200
 Dallas, Texas 75234
 Phone: 972-884-9292
 Fax: 972-488-9848



**NEW HAVEN IMPROVEMENTS
 VAL WOOD DISTRIBUTION CENTER 9**
 CITY 1250 CHAMPION CIRCLE, SUITE 100
 CARROLLTON, TEXAS

G:\PROLOGIS - T.105455-Valwood\DC 9\Tenant Improvements\New Haven\New Haven-permit.dwg, 6/5/2009 4:04:11 PM, 1:1