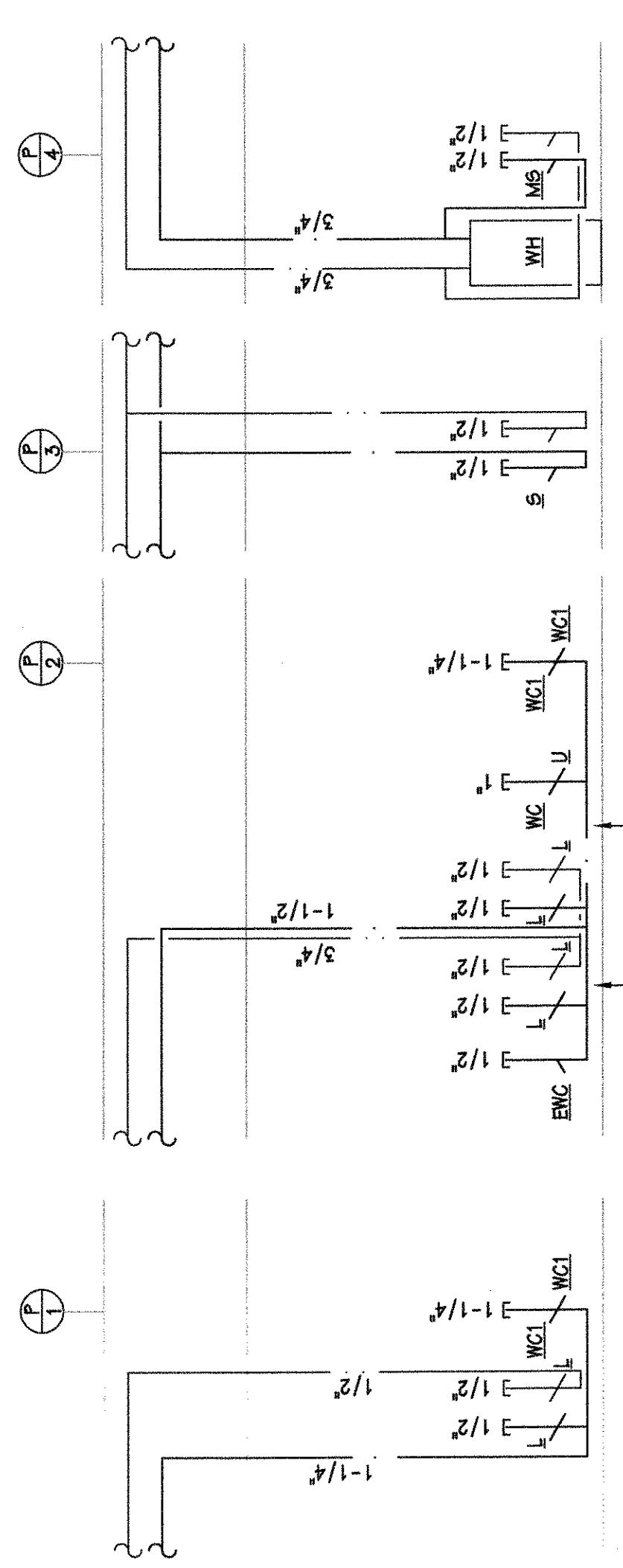


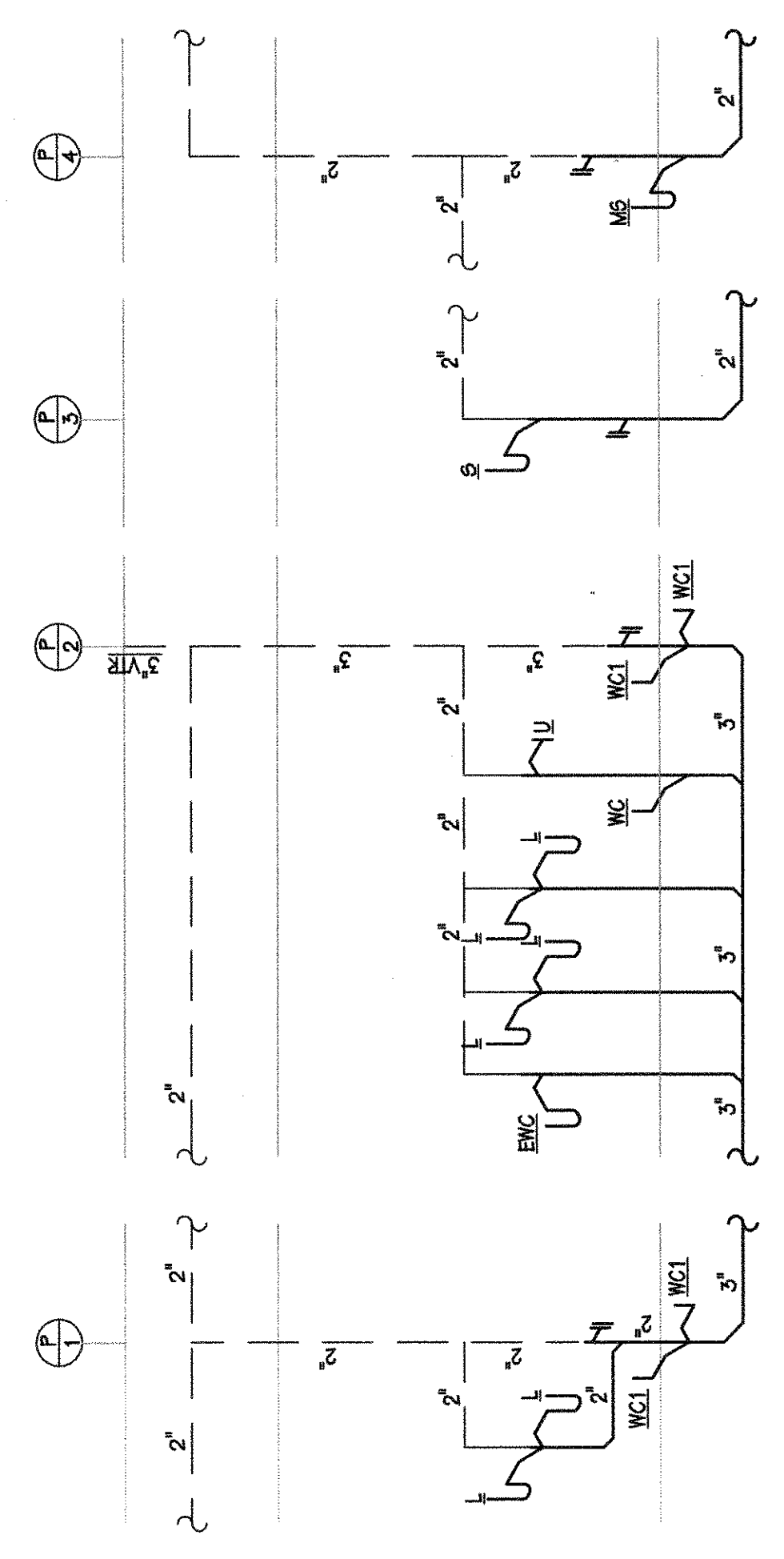
Revisions:

1.	
2.	
3.	
4.	
5.	



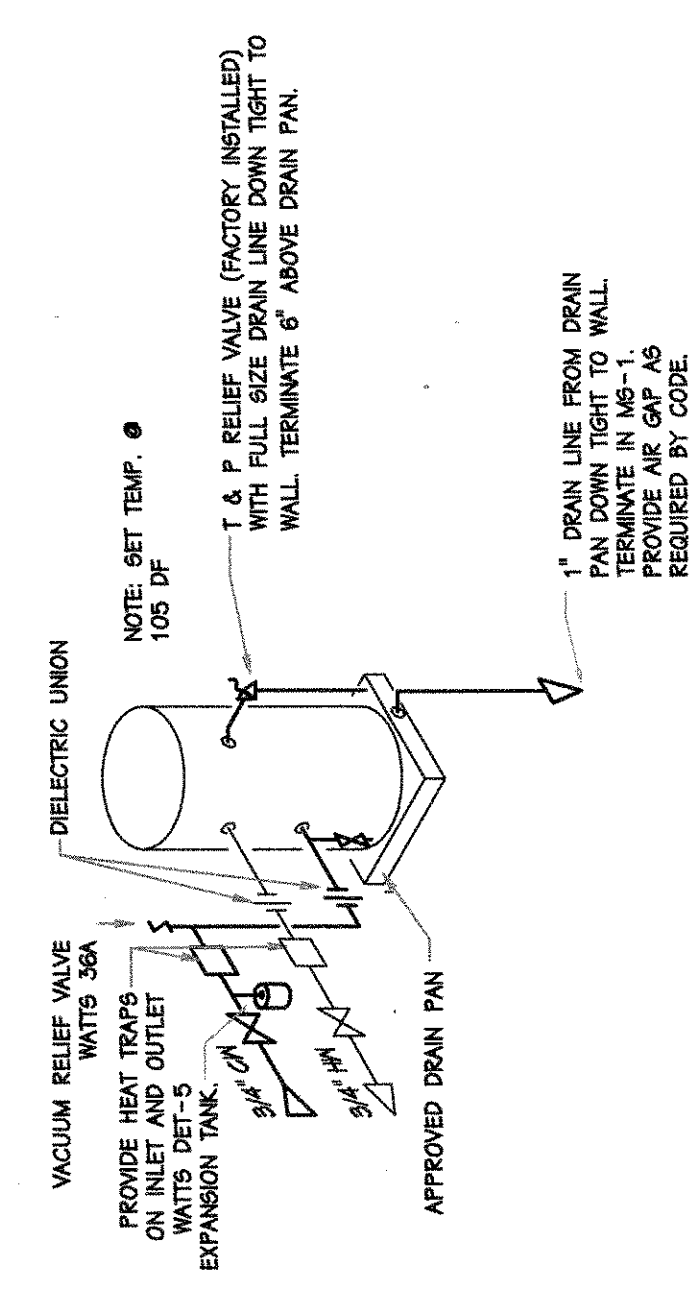
NOTE: PROVIDE TRAP PRIMERS (OR TRAP GUARDS IF ACCEPTABLE WITH LOCAL CODE AUTHORITIES) FOR ALL FLOOR DRAINS AND FLOOR SINKS

2 DOMESTIC WATER RISERS
 NO SCALE



NOTE: PROVIDE TRAP PRIMERS (OR TRAP GUARDS IF ACCEPTABLE WITH LOCAL CODE AUTHORITIES) FOR ALL FLOOR DRAINS AND FLOOR SINKS

3 SANITARY SEWER RISERS
 NO SCALE



GENERAL NOTES
 1. PROVIDE WATER HEATER DEF-5 EXPANSION TANK IN COLD WATER LINE ON THE WARM SIDE OF THE COLD WATER SHUTOFF VALVE.
 2. SET WATER HEATER IN 8" DEEP WATERPROOF PAN. ALL VALVES SHALL BE ACCESSIBLE WITHIN 8" OF FLOOR.
 3. PROVIDE PRESS/BUILD HEAT TRAP FITTINGS IN WATER HEATER COLD WATER INLET AND HOT WATER OUTLET.

4 DOMESTIC WATER HEATER
 NO SCALE

CONNECT NEW 2" C.W. TO EXISTING

INSTALL IGA APPROVED FLEXIBLE GAS CONNECTOR, UNION, BIRT LEAG AND GAS REGULATOR (TYPICAL)

EXISTING SANITARY SEWER CLEANOUT
 CONNECT NEW 4" S6 TO EXISTING

3/4" (S6) GAS LINE DOWN TO GAS METER
 EXISTING GAS LINE TO BE MAINTAINED
 MOST REG. OUTLET IS <125"