

TENANT: MEDISCA  
PROJECT: FREEPORT TECH  
ADDRESS: 8300 ESTERS BLVD #940, IRVING, TX 75063  
JOB NO.: 09057-CD  
DATE: OCTOBER 8, 2009

CONSTRUCTION DOCUMENTS  
Statement of Jurisdiction:  
"The Texas Board of Architectural Examiners has jurisdiction over complaints regarding the professional practices of persons registered as architects in Texas." TBAE, PO Box 12337, Austin, TX 78711, Telephone 512-305-9000

DIVISION 2 - SITE WORK  
1. CONTRACTOR TO ALTER EXISTING COUNTERTOP VANITY, BACKPLASH, POSSIBLY WALL HUNG MIRROR AND BRACING BELOW TO ALLOW FOR 36" LONG HANDICAP GRAB BAR TO COMPLY WITH T.A.S. REQUIREMENTS. DEMO EXISTING 24" LONG HANDICAP GRAB BAR WHICH IS NON-COMPLIANT. ASSURE WALL REINFORCEMENT FOR LATERAL LOADS ON GRAB BAR TO MEET T.A.S. REQUIREMENTS.  
2. CONTRACTOR TO FIELD VERIFY EXISTING SELF RIMMING SINK AT RESTROOMS 103, 104 FOR T.A.S. COMPLIANCE. REPLACE ACCORDINGLY IF NOT T.A.S. COMPLIANT.

DIVISION 7 - INSULATION  
1. PROVIDE HANDI-LAVGUARD (MOLDED INSULATION) KIT FOR HANDICAP LAVATORY TO COVER NEW PIPING BELOW LAVATORY AT EACH REMODELED RESTROOM 103, 104. MODEL #102-G.

DIVISION 8 - DOORS & WINDOWS  
1. PROVIDE AUTOMATIC DOOR OPENERS (PUSH BUTTON) EACH SIDE OF DOOR AT EXISTING RSTROOM 103, 104 SINCE COMPLIANCE OF 18" ON PULL SIDE OF DOOR IS NOT ACHIEVEABLE.

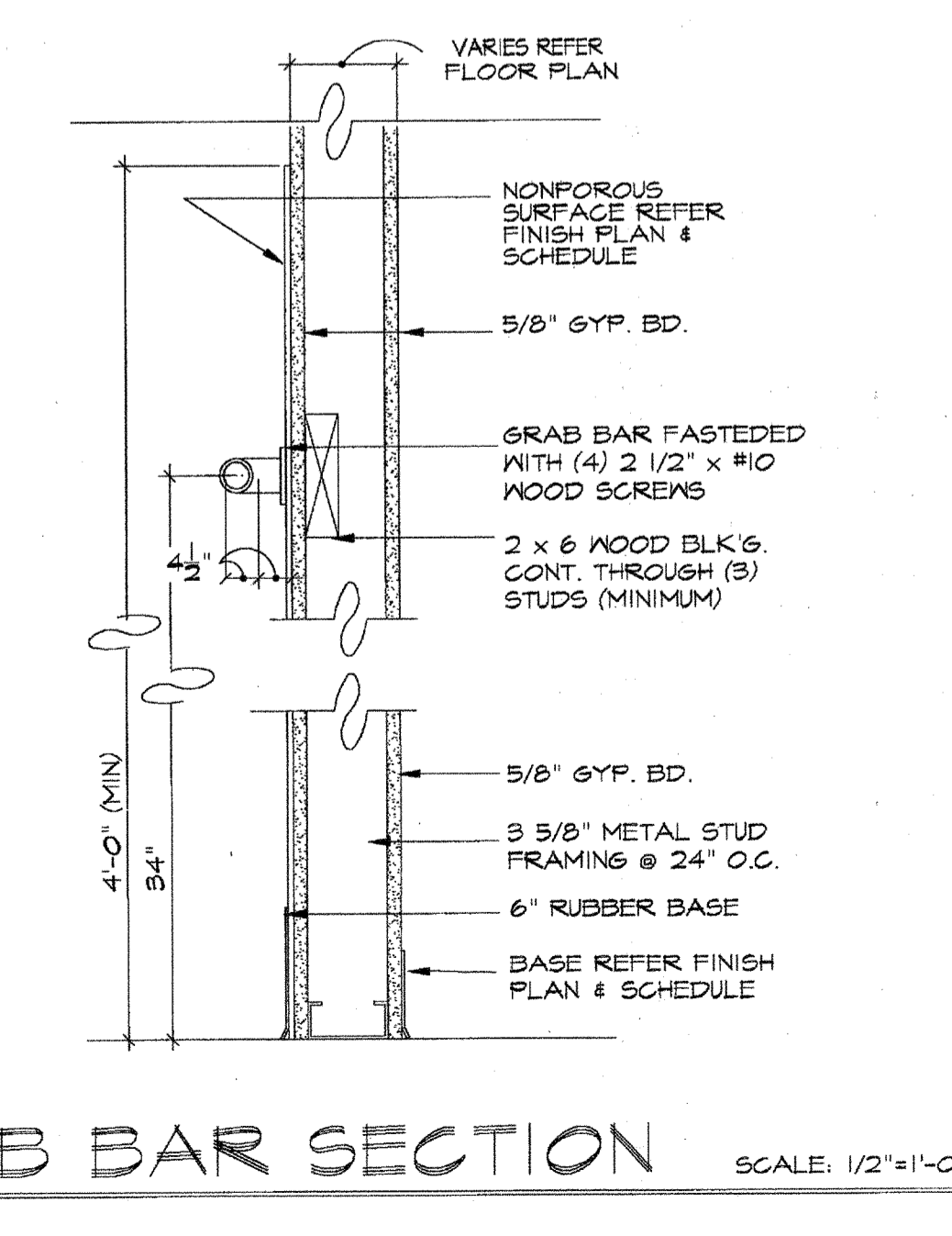
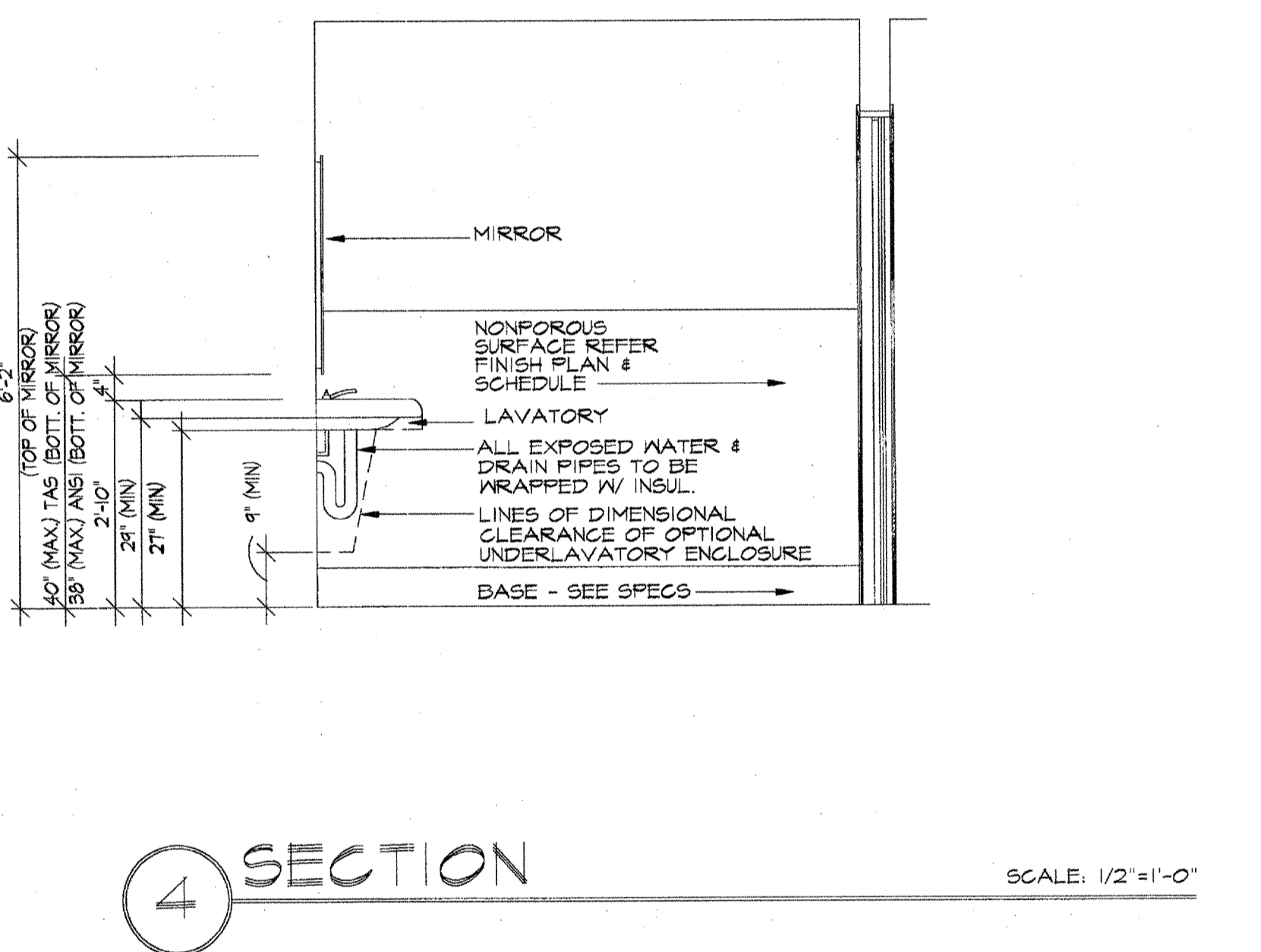
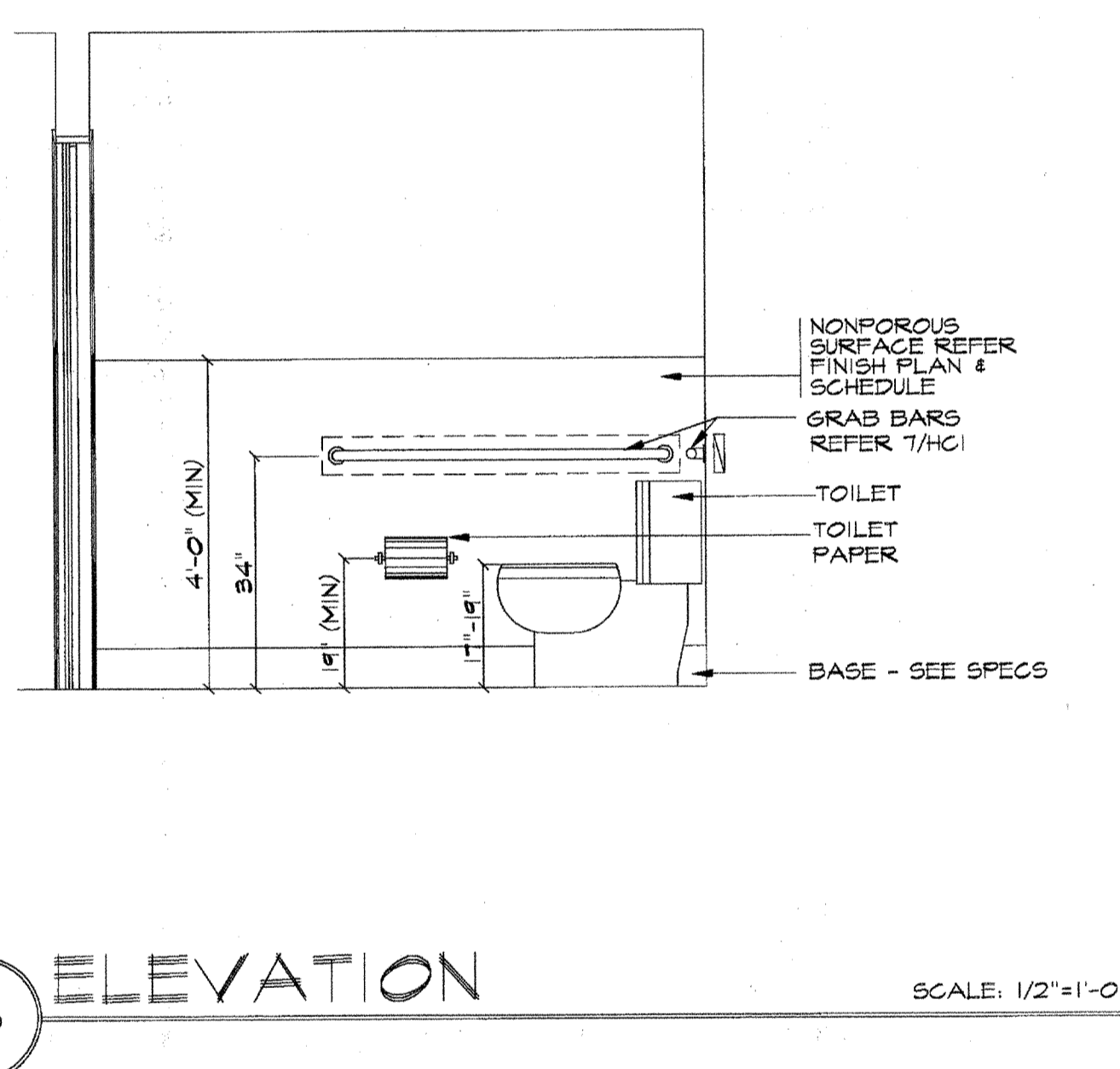
DIVISION 10 - SPECIALTIES  
1. PROVIDE A SIGN PLAQUE BESIDE REMODELED RESTROOM 103, 104 DOOR PER T.A.S. REQUIREMENT

LETTER	MANUFACTURER	DESCRIPTION
A1.2	HANDICAP WATER CLOSET-TANK TYPE	AMERICAN STANDARD (OR EQUAL) VITREOUS CHINA, "CHAMPION" 4 RIGHT HEIGHT (WHITE) ELONGATED TANK TYPE, 12" ROUGH-IN FROM FINISH WALL FACE, 16-1/2" HIGH TOILET ELONGATED BOWL RIM HEIGHT, LOW CONSUMPTION (6.0 LPP/L6 OFF), MAX 5 LB FLUSH PRESSURE. FEATURES CHAMPION 4 FLUSHING SYSTEM PERFORMANCE AND PLATFORM 4, 3" NON-ADJUSTABLE PISTON ACTION ACCELERATOR FLUSH VALVE, ELONGATED SIPHON ACTION JETTED BOWL, 2-3/8" FULLY-GLAZED TRAPWAY, SWEEPING PIER ON BOWL, 10 YR WARRANTY COVERS EVERYTHING INSIDE TANK AND BOWL, SPEED CONNECT TANK-BOWL COUPLING SYSTEM, DIMENSIONS - 30-3/8" L X 19" W X 33-7/8" H X 16-1/2" H TO RIM, HEIGHT FROM FINISH FLOOR TO TOP OF SEAT SHALL NOT EXCEED 19". MAIN FIXTURE: 2002.014 - CHAMPION RIGHT HEIGHT ELONGATED BOWL WITH TANK INCLUDED, 2-BOLT CAPS, WITH LEFT HAND TRIP LEVER 2002.800 - CHAMPION RIGHT HEIGHT ELONGATED BOWL WITH TANK INCLUDED, 2-BOLT CAPS, WITH RIGHT HAND TRIP LEVER COMPONENTS: 5325.024 - "RISE & SHINE" (WITH EASY TO CLEAN LIFT-OFF HINGE SYSTEM) SOLID PLASTIC OPEN FRONT SEAT WITH COVER COMPLETE WITH BOLTS, NUTS AND DUAL FACED ADHESIVE WASHERS. (COLOR TO MATCH FIXTURE COLOR). 7381 - SX18A - TRIP LEVER LOCATION: PROVIDE (1) AT EACH REMODELED RESTROOM 103, 104 AT HANDICAP STALL.
H	H.C. GRAB BAR	"BRADLEY", #8120-00136, MODEL 812 SERIES WITH BRADEX, #899-010 CONCEALED MOUNTING KITS. TUBING (TYPE 304), 18 GA STAINLESS STEEL, 1-1/2" O.D., HEAVY DUTY STAINLESS STEEL IN ARCHITECTURAL SATIN FINISH. RETURN PROVIDES 1-1/2" STANDARD SAFETY CLEARANCE BETWEEN WALL AND BAR. ESCUTCHEONS (TYPE 304), 22 GA STAINLESS STEEL IN ARCHITECTURAL SATIN FINISH. SNAPS OVER FLANGES. PROVIDE AT REAR WALL AT EACH HANDICAP ACCESSIBLE RESTROOM 103, 104. REFERENCE SHEET HC-1. (REPLACES NON-COMPLIANT GRAB BAR AT EACH RESTROOM)

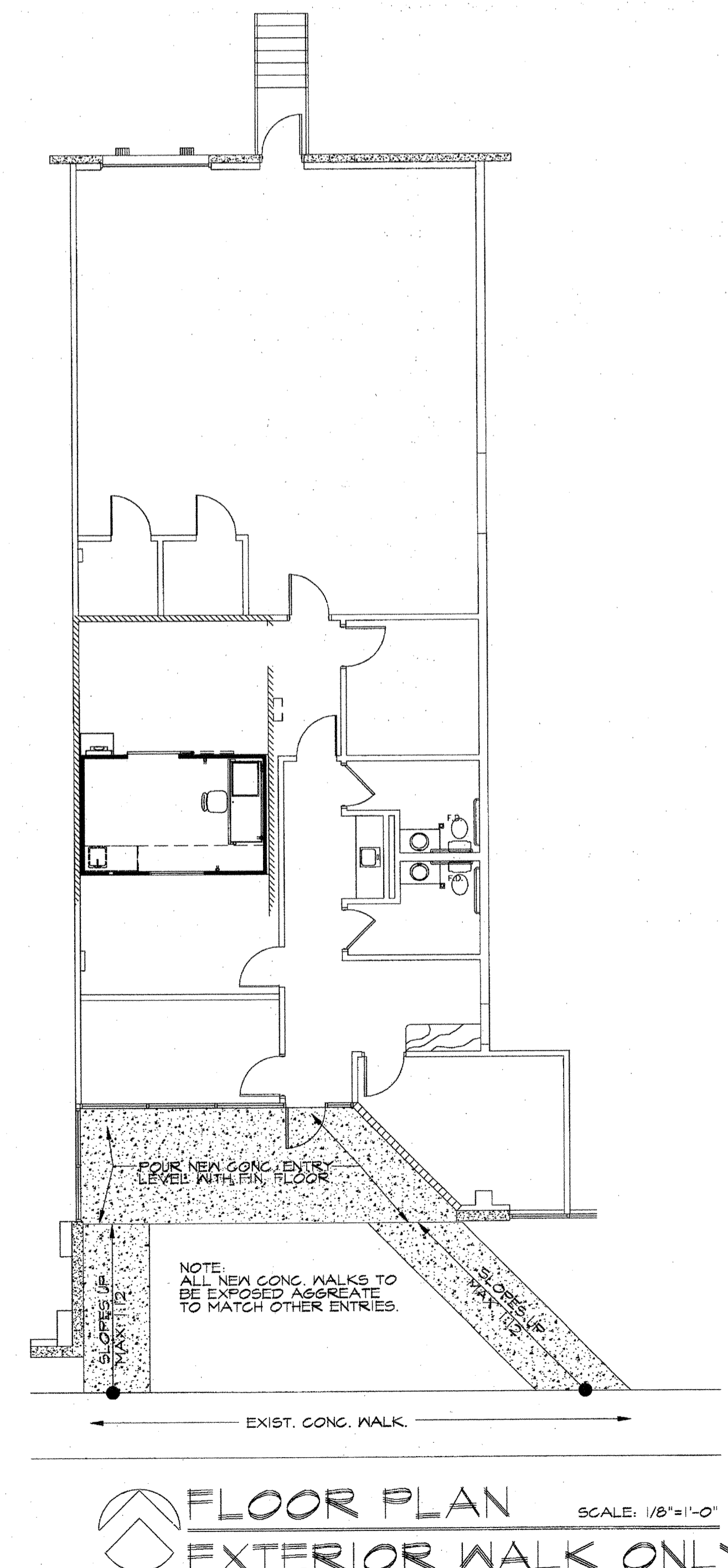
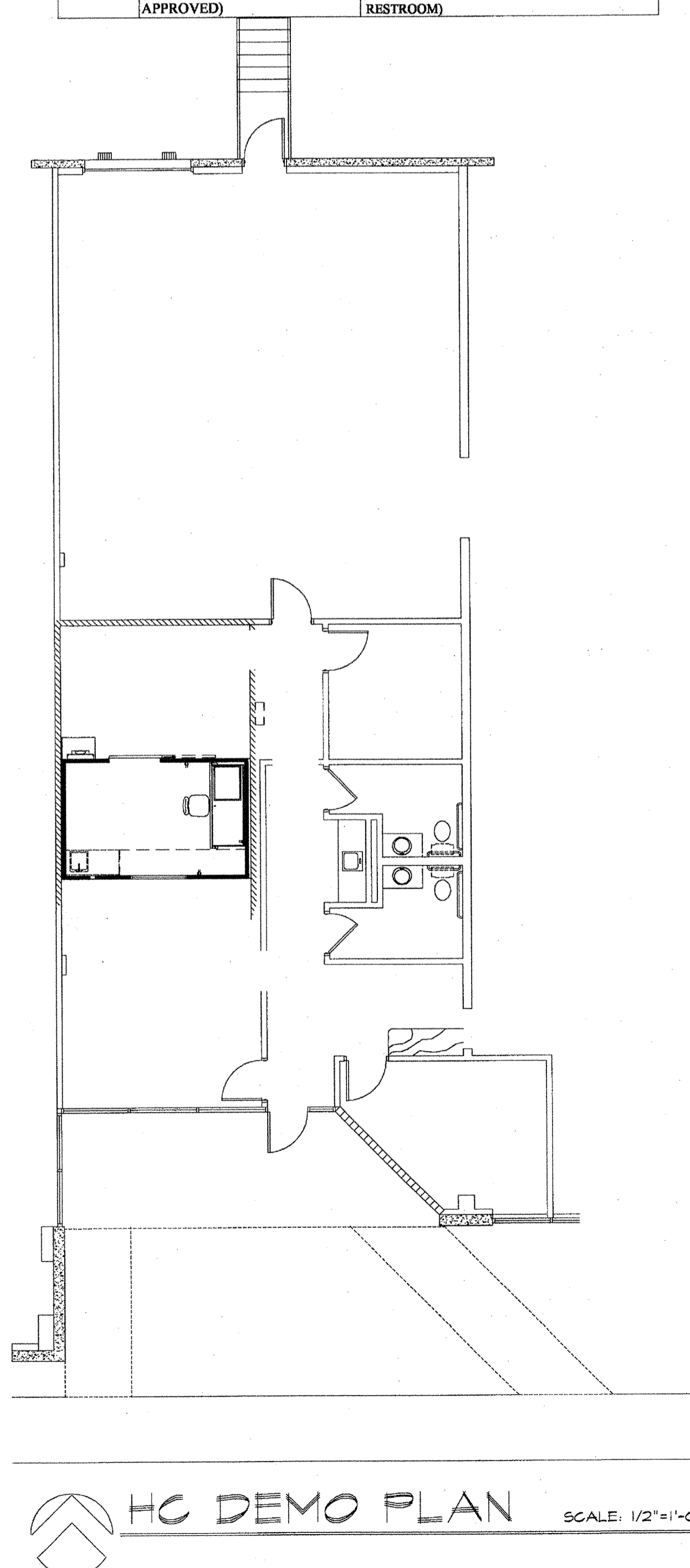
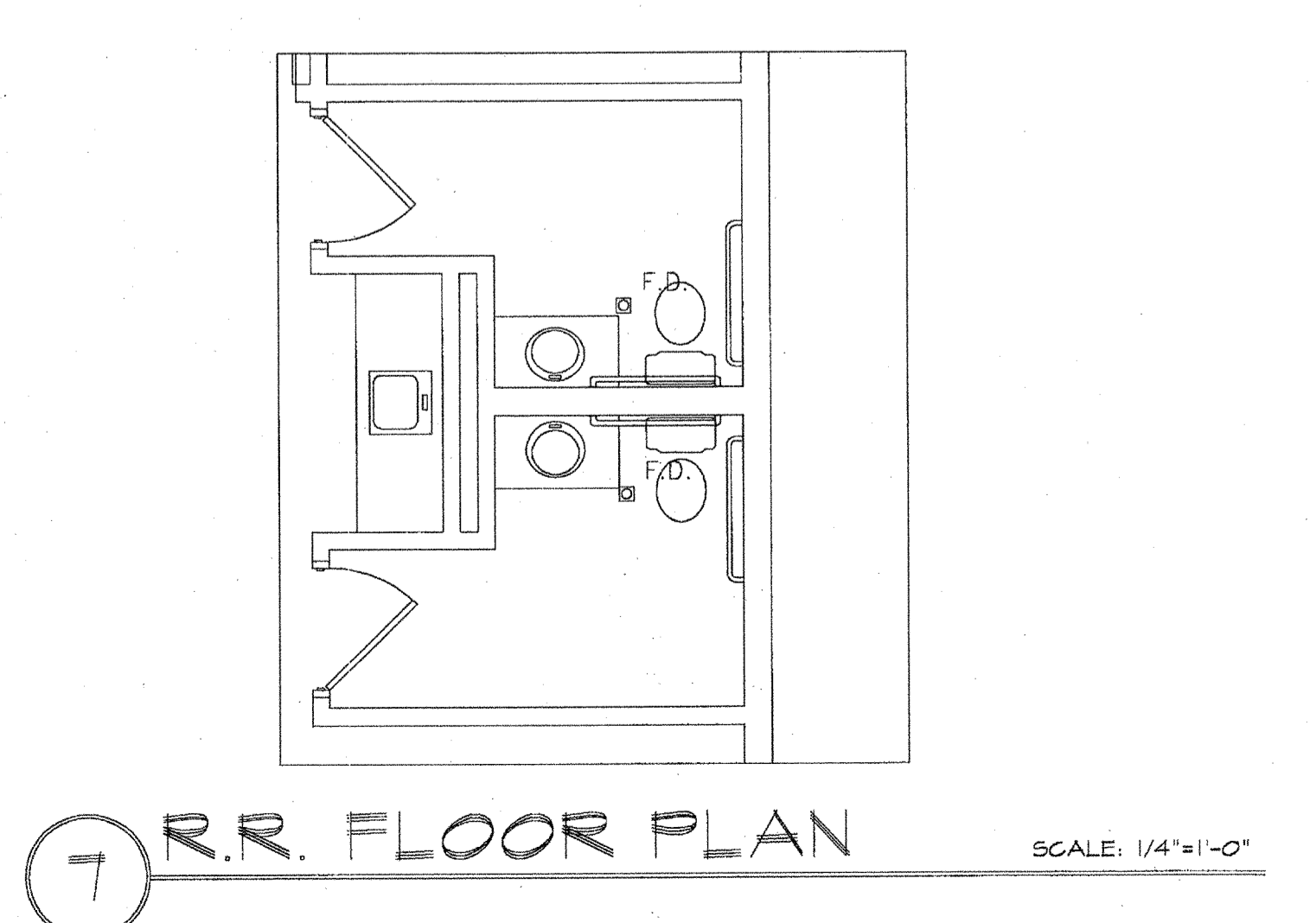
NOTES:  
1. ALL FIXTURES TO BE INSTALLED PER MANUFACTURERS' SPECIFICATIONS.  
2. REFER TO SHEET HC-1 FOR TYPICAL ACCESSIBILITY EQUIPMENT DIMENSIONS.

DIVISION 15 - PLUMBING

NOTES:  
1. ALL FIXTURES TO BE INSTALLED PER MANUFACTURERS' SPECIFICATIONS.  
2. REFER TO SHEET HC-1 FOR TYPICAL ACCESSIBILITY EQUIPMENT DIMENSIONS.



NOTE:  
1. THIS FLOOR PLAN IS FOR HANDICAPPED FACILITY DETAILS ONLY. REFER TO ARCHITECTURAL FLOOR PLAN FOR ACTUAL TOILET ROOM DIMENSIONS.  
2. THE STRUCTURAL STRENGTH OF GRAB BARS, FASTENERS AND MOUNTING DEVICES SHALL BE CAPABLE OF SUPPORTING A STEADY FORCE OF 250 LBS. APPLIED IN ANY DIRECTION.  
3. GRAB BARS SHALL NOT ROTATE IN THEIR MOUNTINGS.



REVISIONS

MEDISCA

REGISTERED ARCHITECT  
PERRY B. MOORE  
12/16/09  
Sealed

STATEMENT OF JURISDICTION:  
THE TEXAS BOARD OF ARCHITECTURAL EXAMINERS HAS JURISDICTION OVER COMPLAINTS REGARDING THE PROFESSIONAL PRACTICE OF PERSONS REGISTERED AS ARCHITECTS IN TEXAS. TBAE, P.O. BOX 12337, AUSTIN, TX 78711, TELEPHONE 512-305-9000

REPRESENTATION OF THIS SHELL BUILDING WAS OBTAINED FROM SOURCES BELIEVED RELIABLE; HOWEVER, PLANARC ARCHITECTURAL DESIGN GROUP, INC. MAKES NO WARRANTIES, WARRANTIES, OR REPRESENTATION AS TO THE COMPLETENESS OR ACCURACY THEREOF.

© COPYRIGHT 2009 THESE DRAWINGS AND SPECIFICATIONS ARE FULLY PROTECTED BY FEDERAL AND STATE COPYRIGHT LAWS. ANY INFRINGEMENT WILL BE VIGOROUSLY PROSECUTED.

PLANARC ARCHITECTURAL DESIGN GROUP, INC.  
PAT MOORE  
MIKE J. STONE  
2720 N. Stemmons Freeway, Ste. 1001  
Dallas, Tx. 75207 214/634-0234 Fax: 214/634-0236  
E-MAIL: planarc@planarc.com

IDI Dallas Region  
5420 LBJ Freeway  
Suite 1275  
Dallas, Tx. 75240  
PH: 972-560-7000  
FAX: 972-560-7007

LEASING AGENT  
BRIGITTE JAMISON  
BUILDING FREEPORT TECH CENTRE  
ADDRESS 8300 ESTERS BLVD. SUITE 940  
CITY IRVING, TEXAS 75063  
DRAWN BY DTM/PAT DATE 12-16-2009  
PROJECT / NO.  
JOB NO. 09057-CD  
SHEET of