

**ROOM FINISH SCHEDULE**

ROOM #	ROOM NAME	FLOOR	BASE	WALL REFERENCE MATERIAL KEYS				CEILING		MILLWORK			DOORS		REMARKS
				NORTH	EAST	SOUTH	WEST	HEIGHT	MATERIAL	MILLWORK	COUNTER	WINDOWS	DOOR	FRAME	
101	OPEN OFFICE	A/E	C	K/N	K/N	K	K	9'-0"	Q			M	V	W	
102	CONFERENCE	A	C	K	K	K	K	9'-0"	Q				V	W	
103	OFFICE	A	C	K	K	K	K	9'-0"	Q				V	W	
104	CORRIDOR	B	C	K	-	K	K	9'-0"	Q				V	W	
105	BREAK ROOM	B	C	K	K	K	K	9'-0"	Q	T	T		V	W	
106	WOMEN'S RR	B	C	K/R	K	K	K/R	9'-0"	Q		T		V	W	
107	MEN'S RR	B	C	K/R	K/R	K	K	9'-0"	Q		T		V	W	
108	WAREHOUSE	U	H	L	L	U	U	VARIES	U				U	U	
109															
110															

**DOOR SCHEDULE**

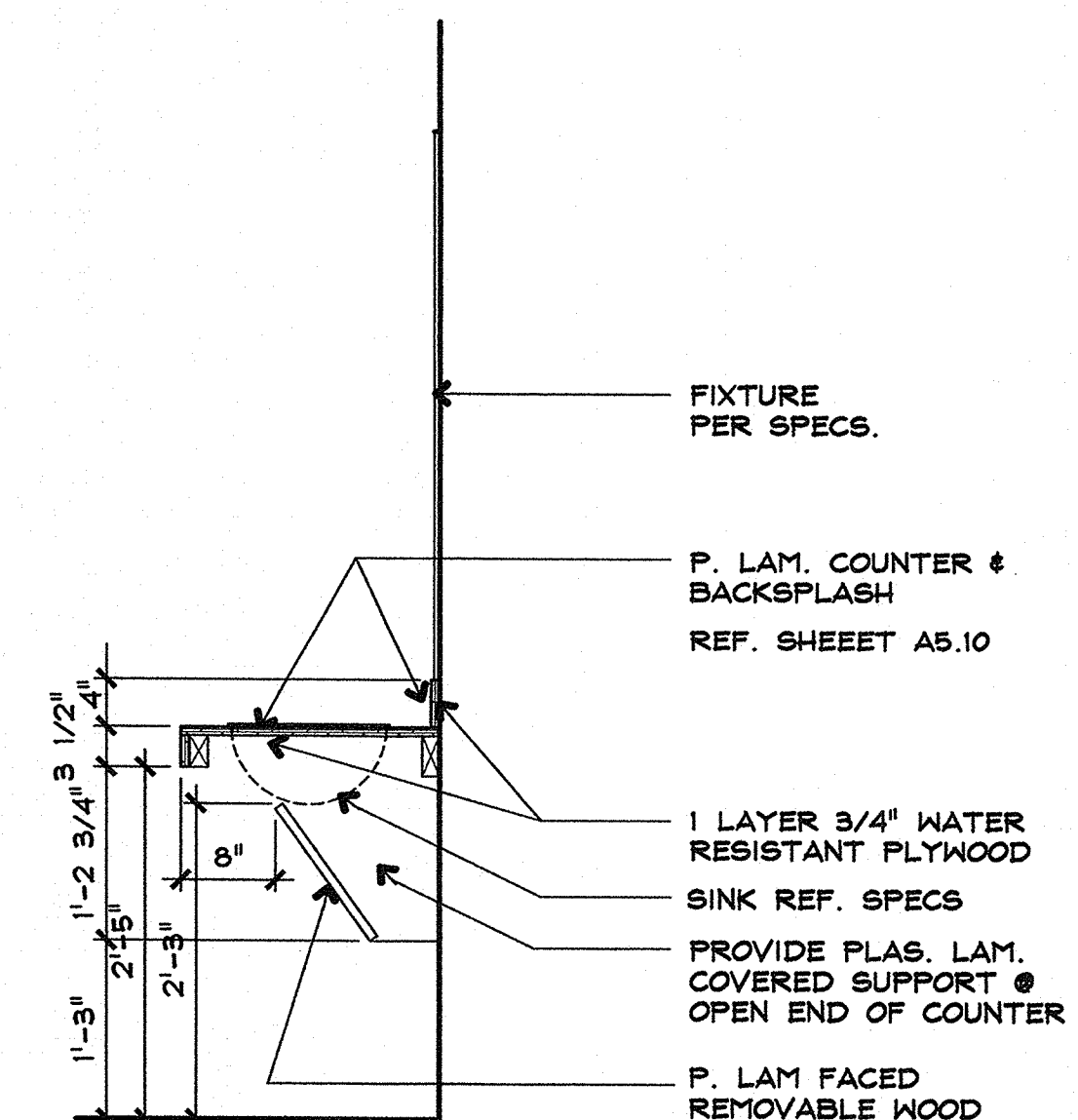
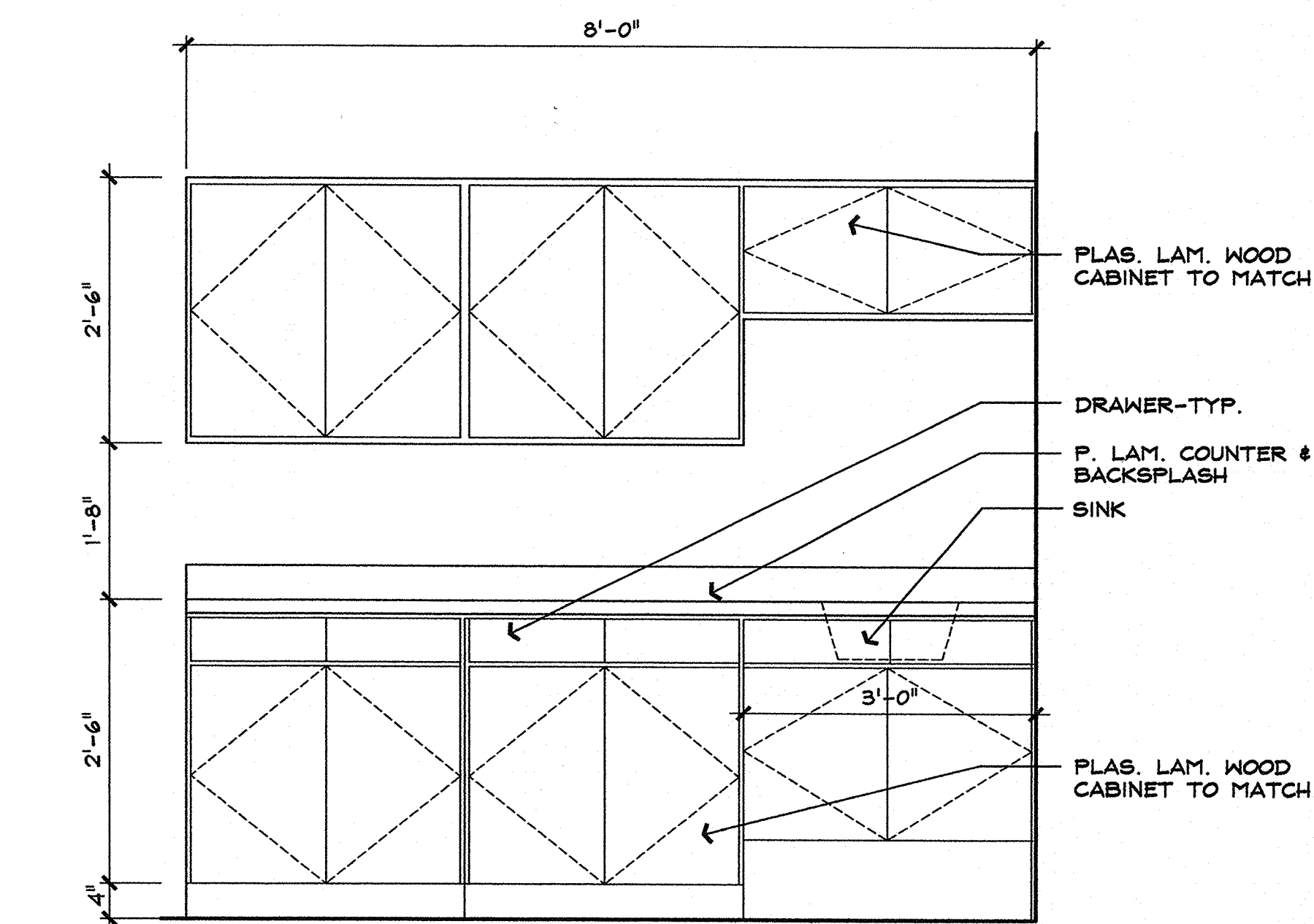
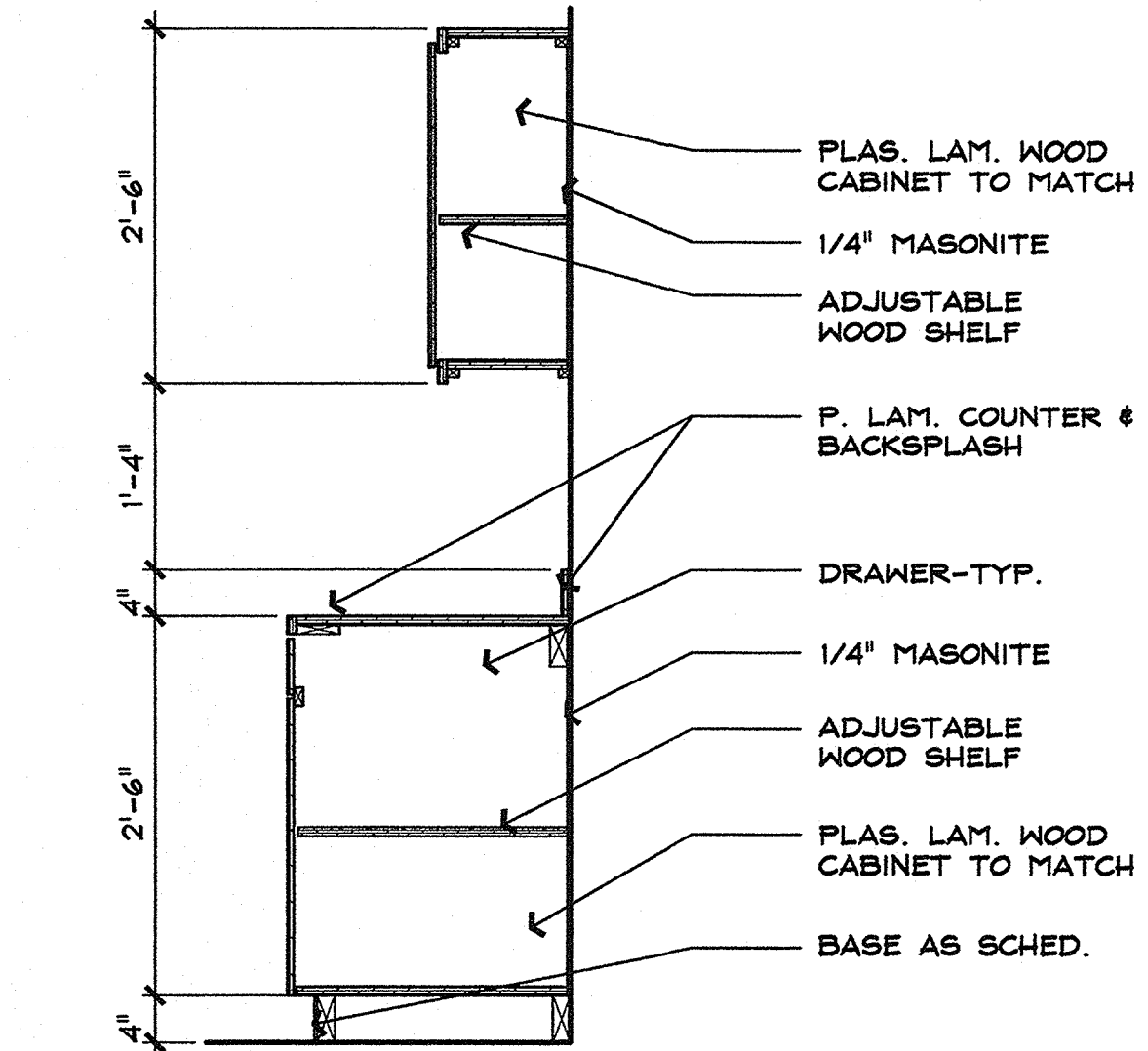
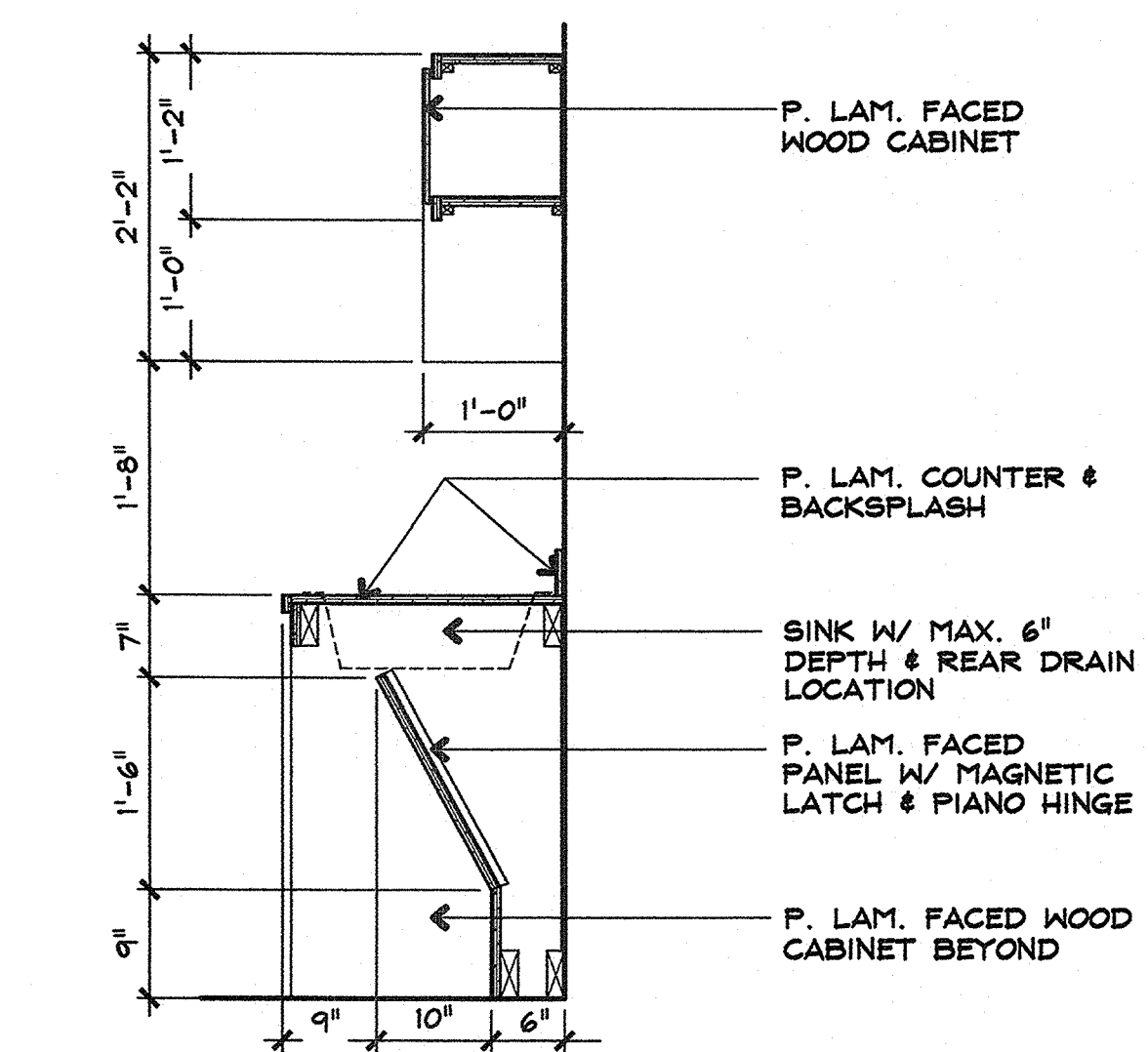
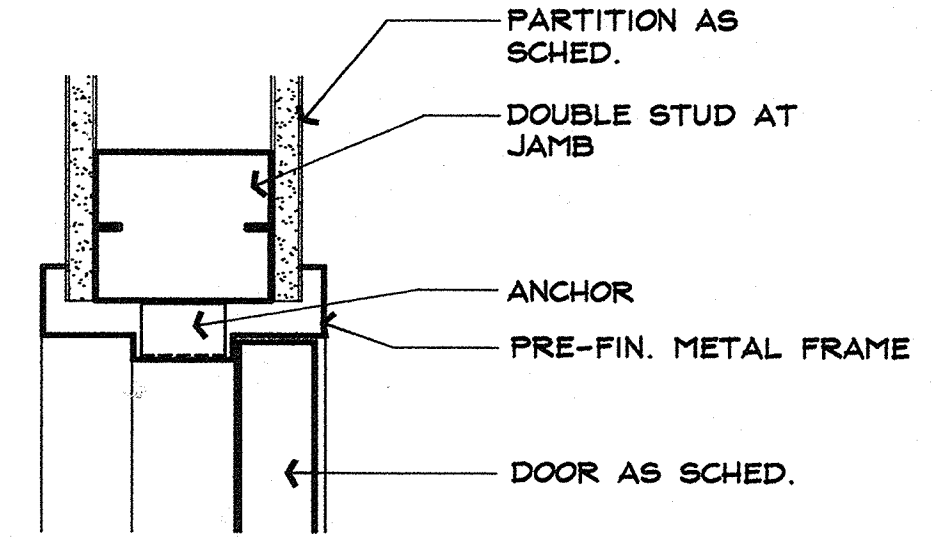
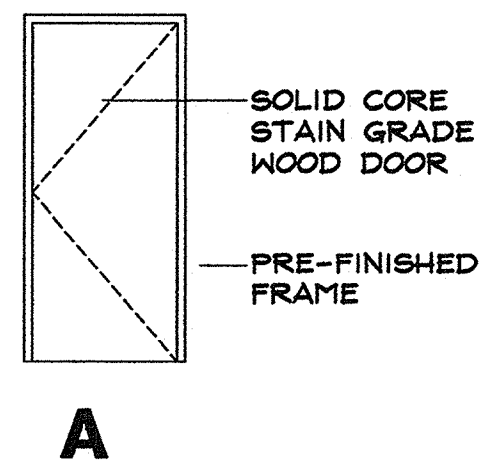
DOOR MARK	SIZE (FRAME OPENING)	THICKNESS	TYPE	FRAME				HARDWARE SET	UL LABEL	REMARKS
				TYPE	HEAD	HEAD	JAMB			
101	EXISTING									
102	3'-0" X 7'-0"	1 3/4"	A	PRE-FIN				2		
103	3'-0" X 7'-0"	1 3/4"	A	PRE-FIN				1		
104	3'-0" X 7'-0"	1 3/4"	A	PRE-FIN				1		CLOSER & SWEEP
105	3'-0" X 7'-0"	1 3/4"	A	PRE-FIN				2		
106	3'-0" X 7'-0"	1 3/4"	A	PRE-FIN				4		CLOSER
107	3'-0" X 7'-0"	1 3/4"	A	PRE-FIN				4		CLOSER
108	EXISTING									

**MATERIAL KEY**

A	CARPET
B	VCT
C	RUBBER COVE BASE
D	NOT USED
E	CERAMIC TILE FLOORING
F	NOT USED
G	NOT USED
H	WOOD BASE-1 X 6 PAINTED
J	GYP. BD.-TAPE ONLY
K	GYP. BD. TAPE,BED,TXT. & PT.
L	GYP. BD. - TAPE, BED & PT.
M	MINI BLINDS
N	GLASS STOREFRONT
P	EXIST'G. ACOUSTICAL TILE
Q	2X4 ACOUSTICAL TILE
R	FRP - 4' HIGH
S	NOT USED
T	PLASTIC LAMINATE
U	EXISTING CONDITION
V	PRE-FIN. STAINED WOOD
W	METAL - PREFINISHED

**HARDWARE KEY**

1	LOCKSET
2	PASSAGE
3	PRIVACY SET
4	PUSH/PULL



**MAKE READY IMPROVEMENTS  
GSW DISTRIBUTION CENTER #30**

3408 RANDOL MILL RD. ARLINGTON, TEXAS

This drawing has been reviewed and approved by Landlord and Customer as indicated by signatures below. All changes made by customer after date of signature are at Customer's expense.

Landlord \_\_\_\_\_ Date \_\_\_\_\_  
Customer \_\_\_\_\_ Date \_\_\_\_\_

PROJECT NO. XX-XXX  
SHEET TITLE \_\_\_\_\_  
DRAWN BY: \_\_\_\_\_ CHECKED BY: \_\_\_\_\_



2310 LBJ Freeway, Suite 200  
Dallas, Texas 75234  
Phone: 972-884-9292  
Fax: 972-488-9848

