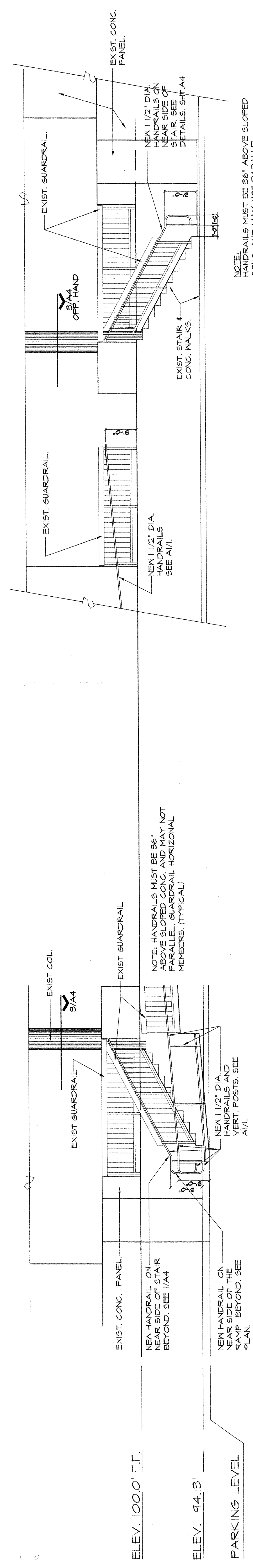


ELEV. 100.0'  
 ELEV. 94.13'  
 ELEV. 93.96'  
 ELEV. 93.42'

**ELEVATION**  
 SCALE: 1/4"=1'-0"



ELEV. 100.0' F.F.  
 ELEV. 94.13'  
 PARKING LEVEL

**ELEVATION**  
 SCALE: 1/4"=1'-0"

**ELEVATION**  
 SCALE: 1/4"=1'-0"

STATEMENT OF JURISDICTION: THE ARCHITECT HAS PREPARED THESE PLANS IN ACCORDANCE WITH THE PROFESSIONAL ENGINEERING ACT AND ARCHITECTURE ACT, TEXAS, CHAPTERS 901 AND 902, RESPECTIVELY, AND HAS NOT BEEN LICENSED AS AN ARCHITECT IN ANY OTHER STATE OR JURISDICTION.  
 PLANARC ARCHITECTURAL DESIGN GROUP, INC. ARCHITECTURAL DESIGN GROUP, INC.  
 2720 N. Stemmons Freeway, Ste. 1001  
 Dallas, TX 75207 214.634.0234 Fax: 214.634.0236  
 E-MAIL: planarc@planarc.com

MARKETING REPRESENTATIVE  
**GOODWIN**  
 BUILDINGS  
 WESTFORK COMPLEX  
 ADDRESS 1475 AVENUE S SUITE  
 CITY GRAND PRAIRIE, TEXAS  
 DRAWN BY DATE 11-19-2008  
 PAI/DTM  
 PROJECT / NO. 08051-1475  
 JOB NO. 08051-1475  
 SHEET

PLANARC ARCHITECTURAL DESIGN GROUP, INC.  
 PAT BROWN  
 BOBIE J. STONER  
 2720 N. Stemmons Freeway, Ste. 1001  
 Dallas, TX 75207 214.634.0234 Fax: 214.634.0236  
 E-MAIL: planarc@planarc.com