

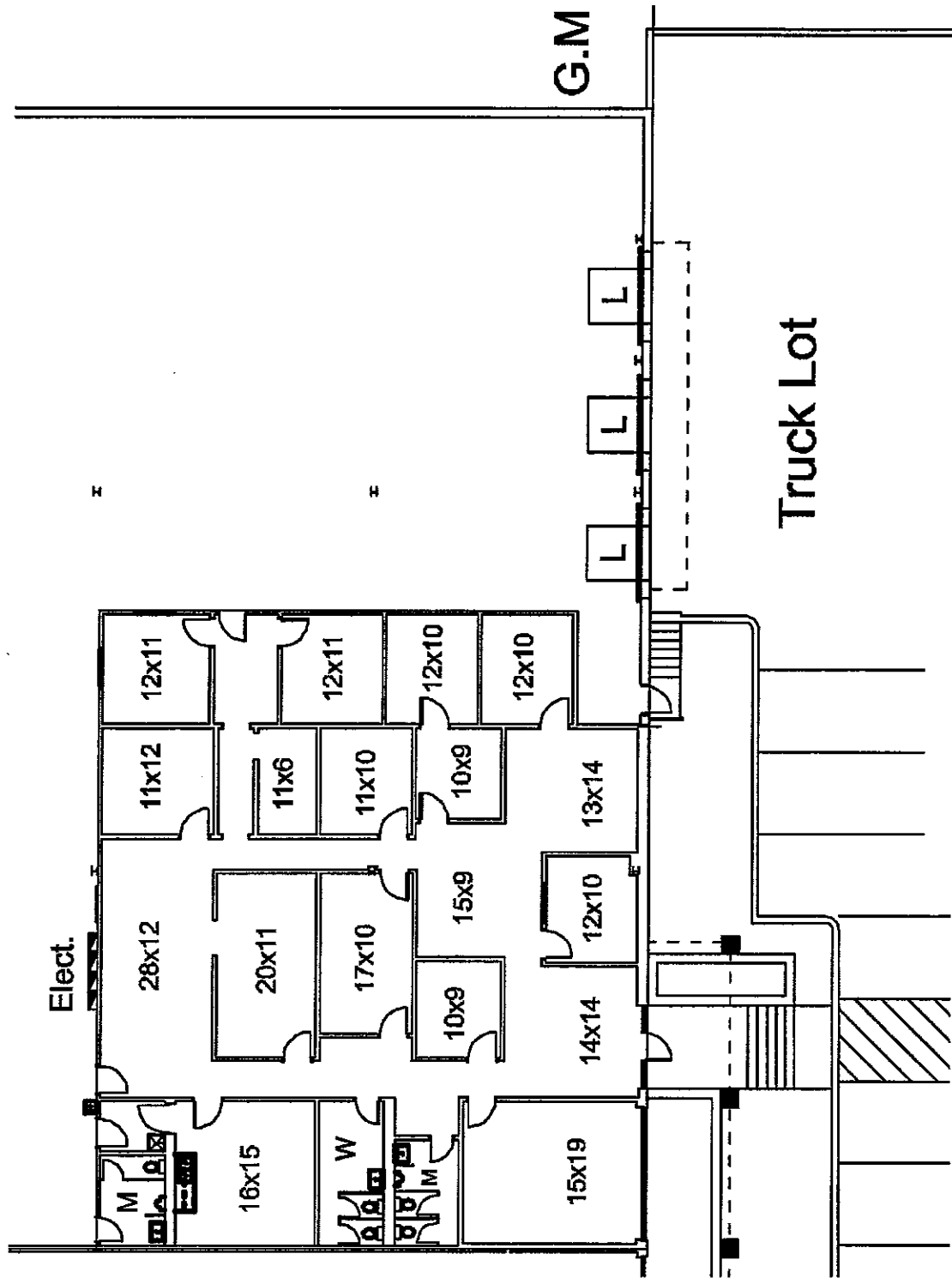


4505 Excel Parkway
Suite 600
Addison, Texas 75001
972.386.4700 D
972.386.4540 F

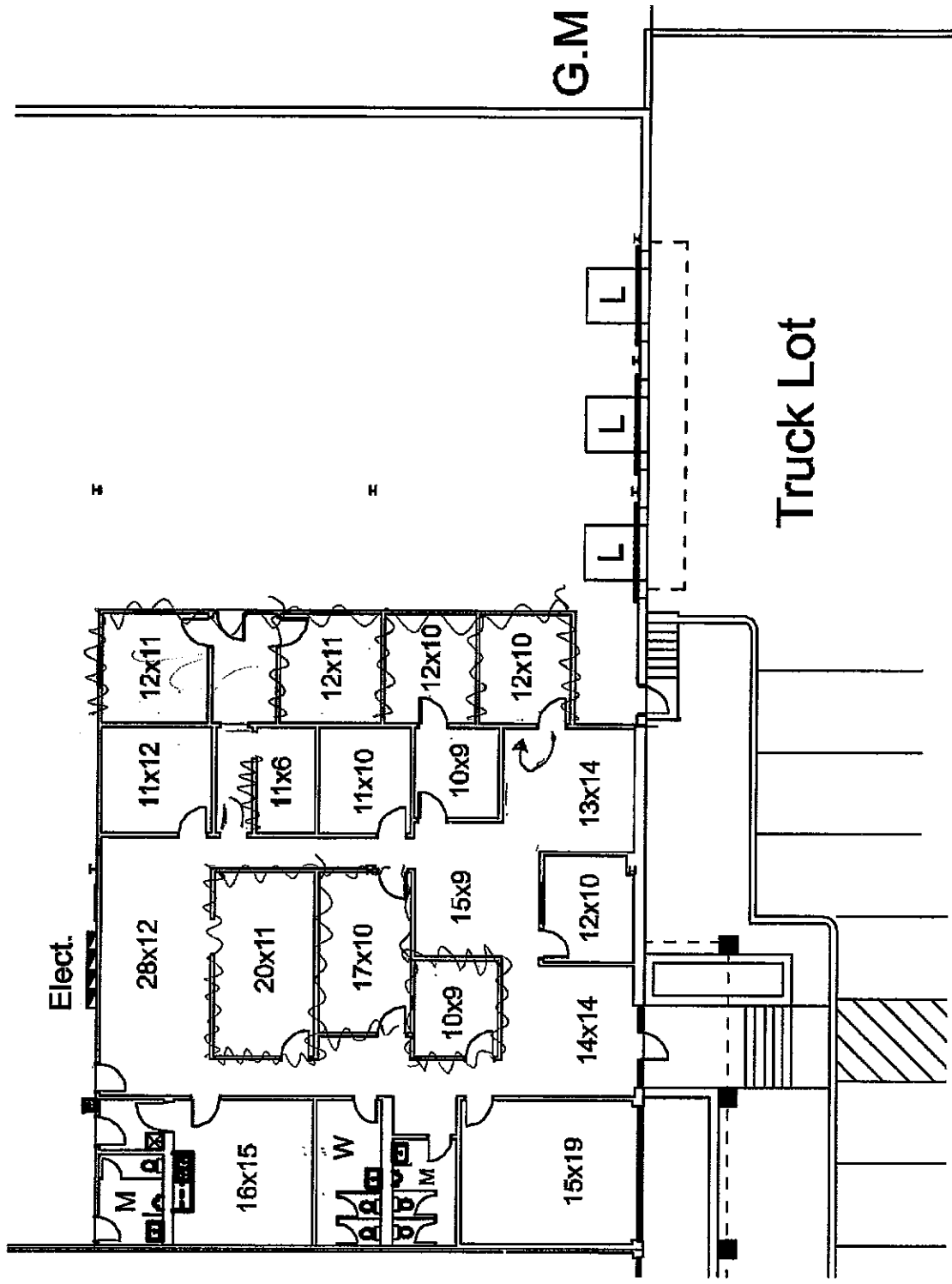
407 113th Street – Vacancy/Demo Specifications

- Demo walls as outlined on the plan, include sprinkler work, HVAC reducing, new programmable thermostats, balancing and electrical, data pulls
- Remove glue from office area – floor back to warehouse concrete
- Add new walls and doors per plan
- HVAC: Relocate split system #1 from demo area to split system #2 that is not functioning. Rebalance to new office layout
- All new continuous grid and ceiling tile throughout the office (excluding bathrooms)
- Paint and carpet office areas (breakroom and restrooms already completed)
 - Paint one standard color
 - Carpet Philadelphia Neyland II (to be determined)
 - Base Armstrong rubber base (to be determined)
- Relocate lighting in open area as needed for even flow of lighting
- All electrical outlets verified in working condition and as marked per plan; label electrical panels
- All data pulls as per plan or add per plan
- Full janitorial clean of the office and wet mop warehouse

Current layout

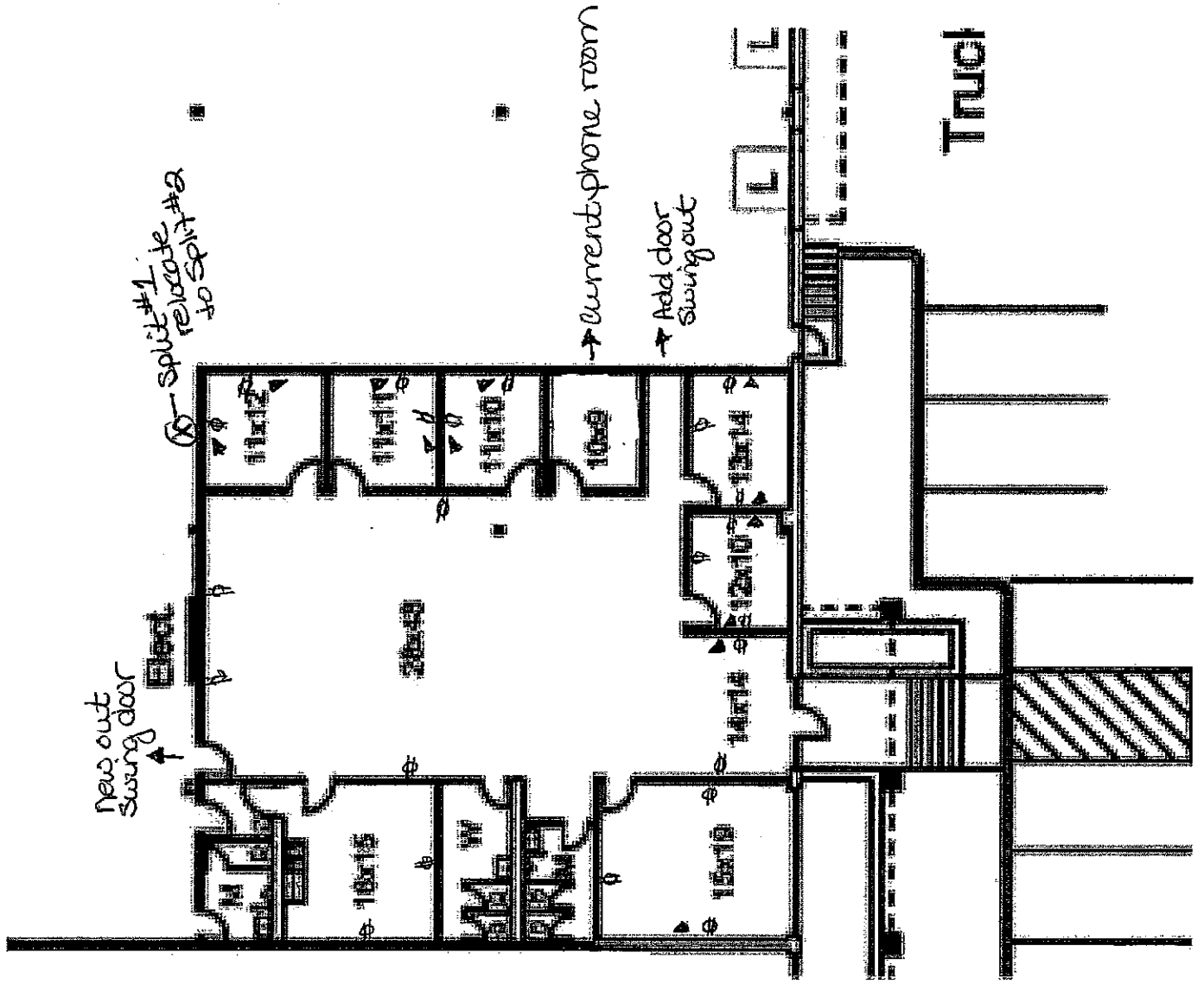


Current layout w/demo



Future Layout

- ▲ data-pulls
- ⊕ outlets



- Continuous grid + new tile
- Paint/Carpet office
- Janitorial clean
- Save extra doors in space for future use