

**1 REFLECTED CEILING PLAN**  
SCALE: 1/8"=1'-0"

**GENERAL NOTES**

- G-01 CONTRACTOR IS SOLELY RESPONSIBLE FOR VERIFYING EXISTING CONDITIONS AND FOR REPORTING ANY DISCREPANCIES TO THE ARCHITECT
- G-02 ALL CONSTRUCTION SHALL COMPLY WITH PROJECT TENANT STANDARDS AND ALL APPLICABLE CODES AS IF REPRODUCED HEREIN.
- G-03 CONTRACTOR SHALL NOTIFY THE ARCHITECT OF ANY CONFLICTS BETWEEN LIGHT FIXTURES, AIR DUCTS, AND SPRINKLER PIPING.
- G-04 ALL LIGHT FIXTURES IN ANY GIVEN AREA SHALL BE CONTROLLED BY ONE OF THE FOLLOWING METHODS:
  - 50% OF FIXTURES SWITCHED SEPARATELY
  - 50% OF BULBS IN A FIXTURE SWITCHED SEPARATELY
  - WALL SWITCHES WITH MOTION SWITCHES
- G-05 SPRINKLER HEAD LOCATIONS ARE SHOWN FOR INFORMATION ONLY. CONTRACTOR IS SOLELY RESPONSIBLE FOR RELOCATING, ADDING OR REMOVING HEADS AS REQ'D TO COMPLY WITH APPLICABLE CODES.

**LEGEND**

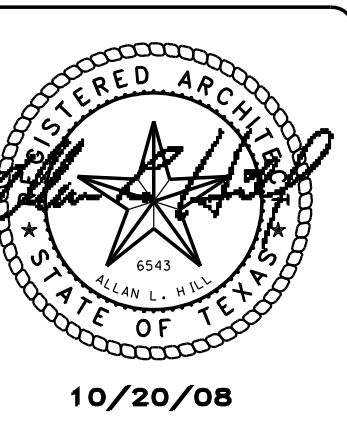
- ANY ITEM PLUS AN "E" INDICATES AN EXISTING ITEM.
- A** NEW LITHONIA ESBP 2X4 LAY-IN FIXTURE WITH (2) TB LAMPS, ELECTRONIC BALLAST
- B** NEW SURFACE MTD FLUORESCENT FIXTURE WITH (4) TBHO LAMPS, ELECTRONIC BALLAST
- OD** EXISTING RECESSED INCANDESCENT FIXTURE W/ 75W HALOGEN LAMP IN RELOCATED POSITION
- F** NEW SURFACE MTD. (2) TUBE FLUORESCENT FIXTURE
- E** EXISTING 2x4 LAY-IN FIXTURE
- NEW INCANDESCENT DOWNLIGHT
- INCANDESCENT WALL WASHER
- BLDG. STD. EXIT LIGHT
- BLDG. STD. EXIT LIGHT W/ DIRECTIONAL ARROW
- EXISTING SPRINKLER HEAD
- BLDG. STD. SMOKE DETECTOR
- BLDG. STD. WALL SWITCH
- BLDG. STD. 3-WAY WALL SWITCH
- DIMMER SWITCH
- 2X2 LAY-IN RETURN AIR GRILLE
- 2X2 LAY-IN SUPPLY AIR GRILLE

**FIRST INDUSTRIAL REALTY - TRUST**

First Industrial Trust, Inc.  
4505 Excel Pkwy, Ste 600  
Addison, Texas 75001  
(972) 419-5712 phone  
(972) 396-4540 facsimile  
www.firstindustrial.com

REVISIONS

NO.	DESCRIPTION



**ALH architects, inc.**

3911 CLEAR COVE  
DALLAS, TX. 75244  
(972) 620-8003

EABPRJ 9803975

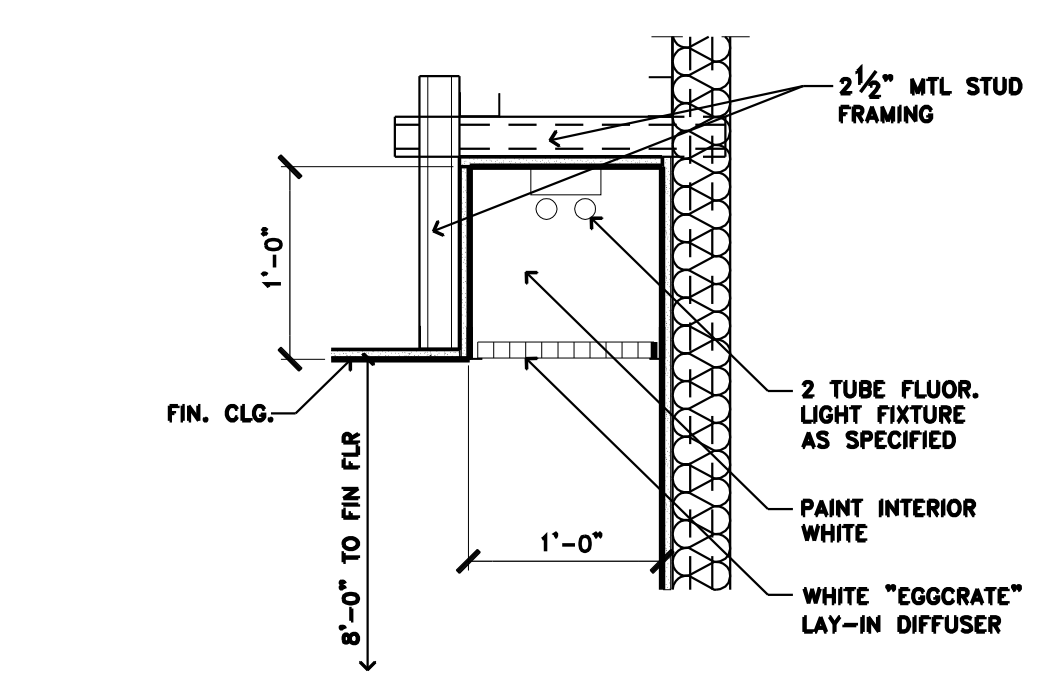
2220 MERRITT DRIVE - SUITE 200  
GARLAND, TEXAS 75041

PROJECT NO. 0820  
DATE 10/20/08

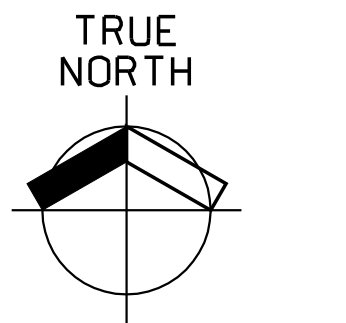
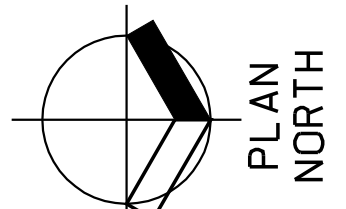
A2.2

**FINISH SCHEDULE**

ROOM NUMBER	FLOOR				BASE				WALLS				CEILING		REMARKS
	VINYL TILE	CARPET	CERAMIC TILE	RUBBER COVE	RUBBER STRAIGHT	CARPET	CERAMIC TILE	TAPE & BED	PAINT	VINYL FABRIC	CERAMIC TILE	FRP @ WET WALL	2x4 LAY-IN @ 5'-0"	SPF BOARD EXPOSED STRUCT.	
100 RECEPTION	11				21								40	41	
101 CONFERENCE	11				21								40	41	
102 OFFICE	11				21								40	41	
103 OFFICE	11				21								40	41	
104 COPY	11				21								40	41	
105 OPEN OFFICE	11				21								40	41	
106 JANITOR	10				20						34		40	41	
107 WOMEN		12				23						32 33		41	SEE ELEV. SHEET A3.0
108 MEN		12				23						32 33		41	SEE ELEV. SHEET A3.0
109 BREAK ROOM	10				20								40	41	
110 OFFICE	11				21								40	41	
111 OFFICE	11				21								40	41	
112 CORRIDOR	11				21								40	41	
113 CORRIDOR	11				21								40	41	
114 WAREHOUSE	11				21								40	42	NO NEW FINISHES THIS AREA



**2 SECTION @ LIGHT COVE**  
SCALE: 1"=1'-0"



\$TIME\$

\$DATE\$

\$FILE\$

4

3

NOT USED

NOT USED