

**DOCUMENT 00901
ADDENDUM NUMBER 01**

DATE: April 15, 2010
PROJECT: Fire Station #7
Mechanical Modifications
4000 Little Road
Arlington, Texas
PROJECT NUMBER: FD-1001
OWNER: City of Arlington
CONSULTANT: Easum Engineering
TO: Prospective Bidders

This Addendum forms a part of the Contract Documents and modifies the Bidding Documents dated April 6, 2010 with amendments and additions noted below. Acknowledge receipt of this Addendum in the space provided in the Bid Form. Failure to do so may disqualify the Bidder.
This Addendum consists of five (5) pages

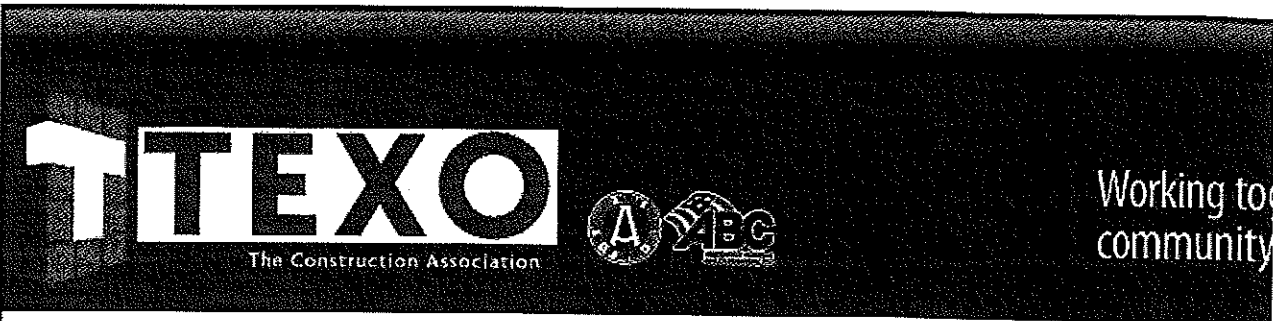
CHANGES TO PROJECT MANUAL:

1. Refer to attached document "Wage Rate 2009". Add this document to Section 304.

CHANGES TO DRAWING:

2. Refer to attached drawing sheet SDM1.0 for revision to floor plan 1/M1.00.

End of Addendum



Chapter	Services	Calendar	Members	YCC
---------	----------	----------	---------	-----

North Texas Construction Industry Wage Rates

Worker Classification Sheet: *Sample Calculation*

Classification	# of Employees	Basic Hourly Rate	Health & Welfare	Pension	Vacation	Total Package
Electrician (Journeyman)	6	\$18.00	\$2.00	\$2.00	Included	\$22.00

This company employs 6 journeyman electricians at an average basic hourly rate of \$18.00 (including vacation), an average hourly rate for health insurance of \$2.00 per employee per hour and an average hourly cost for pension benefits of \$2.00 per hour per employee. The total average hourly wage is \$22.00.

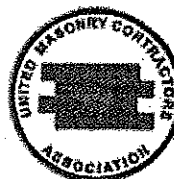
Published Industry Wage Rates

Classification	Average Hourly Rate	Average Health/ Welfare	Average Pension	Average Vacation	Average Total Package
AC Mechanic	\$25.92	\$1.01	\$0.19	\$0.83	\$27.91
AC Mechanic Helper	\$15.81	\$0.00	\$0.00	\$0.30	\$16.77
Acoustical Ceiling Installer	\$15.56	\$0.57	\$0.03	\$0.12	\$16.26
Acoustical Ceiling Installer Helper	\$12.27	\$0.19	\$0.00	\$0.00	\$12.46
Bricklayer/Stone Mason	\$18.54	\$0.24	\$0.00	\$0.00	\$18.78
Bricklayer/Stone Mason Trainee	\$12.61	\$0.29	\$0.00	\$0.00	\$12.90
Bricklayer/Stone Mason Helper	\$10.39	\$0.00	\$0.00	\$0.00	\$10.39
Carpenter	\$17.08	\$1.62	\$0.17	\$0.81	\$19.69
Carpenter Helper	\$13.45	\$0.75	\$0.08	\$0.71	\$14.99
Concrete Cutter/Sawer	\$12.50	\$0.00	\$0.08	\$0.17	\$12.75
Concrete Cutter/Sawer Helper	\$9.50	\$0.00	\$0.10	\$0.18	\$9.78
Concrete Finisher	\$13.97	\$0.41	\$0.04	\$0.14	\$14.55
Concrete Finisher Helper	\$12.14	\$0.43	\$0.04	\$0.11	\$12.72
Concrete Form Builder	\$14.03	\$0.67	\$0.03	\$0.15	\$14.88
Concrete Form Builder Helper	\$11.72	\$0.54	\$0.03	\$0.10	\$12.39
Drywall Mechanic	\$16.10	\$0.56	\$0.02	\$0.30	\$16.98

Drywall Helper	\$12.43	\$0.33	\$0.00	\$0.28	\$13.05
Drywall Taper	\$15.00	\$0.07	\$0.00	\$0.00	\$15.07
Drywall Taper Helper	\$11.50	\$0.07	\$0.00	\$0.00	\$11.57
Electrician (Journeyman)	\$21.77	\$1.08	\$0.05	\$0.38	\$23.29
Electrician Apprentice (Helper)	\$15.32	\$1.09	\$0.05	\$0.27	\$16.73
Electronic Technician	\$20.00	\$0.00	\$0.00	\$0.00	\$20.00
Floor Layer	\$18.00	\$0.00	\$0.00	\$0.00	\$18.00
Floor Layer Helper	\$10.00	\$0.00	\$0.00	\$0.00	\$10.00
Glazier	\$18.53	\$1.92	\$0.38	\$0.71	\$21.54
Glazier Helper	\$13.49	\$1.20	\$0.10	\$0.35	\$15.13
Insulator	\$16.59	\$0.29	\$0.12	\$0.08	\$17.08
Insulator Helper	\$11.21	\$0.36	\$0.11	\$0.13	\$11.81
Laborer Common	\$10.47	\$0.70	\$0.06	\$0.08	\$11.30
Laborer Skilled	\$13.24	\$0.98	\$0.06	\$0.12	\$14.41
Lather	\$17.00	\$0.00	\$0.00	\$0.00	\$17.00
Lather Helper	\$15.00	\$0.00	\$0.00	\$0.00	\$15.00
Metal Building Assembler	\$16.00	\$1.56	\$0.63	\$0.00	\$18.19
Metal Building Assembler Helper	\$12.00	\$1.56	\$0.63	\$0.00	\$14.19
Metal Installer (Miscellaneous)	\$13.00	\$0.00	\$0.00	\$0.00	\$13.00
Metal Installer Helper (Miscellaneous)	\$11.00	\$0.00	\$0.00	\$0.00	\$11.00
Metal Stud Framer	\$16.13	\$1.02	\$0.04	\$0.16	\$17.35
Metal Stud Framer Helper	\$12.83	\$0.24	\$0.00	\$0.00	\$13.07
Painter	\$12.57	\$0.69	\$0.02	\$0.09	\$13.37
Painter Helper	\$9.98	\$0.61	\$0.02	\$0.09	\$10.70
Pipefitter	\$21.14	\$0.90	\$0.13	\$0.45	\$22.59
Pipefitter Helper	\$14.92	\$0.58	\$0.11	\$0.23	\$15.82
Plasterer	\$17.24	\$0.05	\$0.00	\$0.00	\$17.30
Plasterer Helper	\$12.85	\$0.05	\$0.00	\$0.00	\$12.90
Plumber	\$20.33	\$0.69	\$0.12	\$0.43	\$21.56
Plumber Helper	\$14.95	\$0.95	\$0.11	\$0.00	\$16.42
Reinforcing Steel Setter	\$13.01	\$0.36	\$0.07	\$0.23	\$13.67
Reinforcing Steel Setter Helper	\$11.19	\$0.25	\$0.05	\$0.16	\$11.64
Roofer	\$16.78	\$1.25	\$0.23	\$0.17	\$18.43

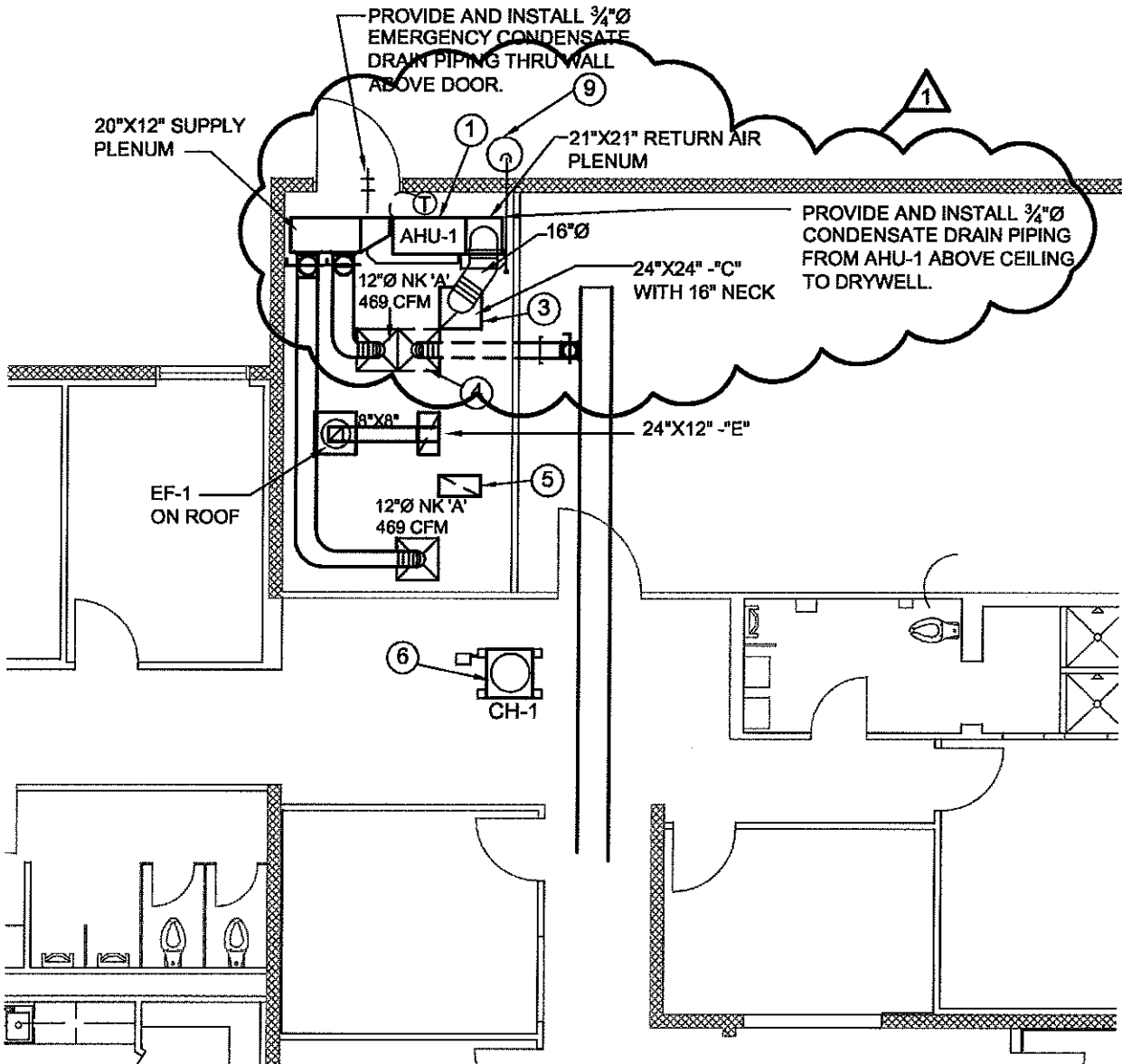
Roofer Helper	\$12.33	\$1.25	\$0.23	\$0.17	\$13.98
Sheet Metal Worker	\$17.49	\$0.97	\$0.10	\$0.51	\$19.06
Sheet Metal Worker Helper	\$14.16	\$1.40	\$0.17	\$0.44	\$16.15
Sprinkler System Installer	\$19.17	\$1.68	\$0.33	\$0.33	\$21.52
Sprinkler System Installer Helper	\$14.15	\$1.28	\$0.34	\$0.31	\$16.07
Steel Worker Structural	\$19.28	\$1.37	\$0.55	\$0.12	\$21.32
Steel Worker Structural Helper	\$13.74	\$1.37	\$0.39	\$0.09	\$15.59
Waterproofer	\$15.00	\$3.75	\$0.68	\$0.45	\$19.88
Concrete Pump	\$18.50	\$0.00	\$0.00	\$0.00	\$18.50
Crane, Clamsheel, Backhoe, Derrick, D'Line Shovel	\$17.81	\$1.30	\$0.12	\$0.24	\$19.48
Forklift	\$12.96	\$0.42	\$0.04	\$0.08	\$13.50
Foundation Drill Operator	\$22.50	\$0.00	\$0.00	\$0.00	\$22.50
Front End Loader	\$13.21	\$0.36	\$0.06	\$0.17	\$13.79
Truck Driver	\$15.21	\$0.65	\$0.06	\$0.19	\$16.11
Welder	\$17.81	\$0.92	\$0.12	\$0.30	\$19.15
Welder Helper	\$12.55	\$0.75	\$0.00	\$0.33	\$13.64

Conducted by the North Texas Construction Industry in cooperation with TEXO; compiled by Lane Gorman Truitt



Online Registration | Safety | Forums | Professional Development

Copyright 2009, TEXO, The Construction Association. All rights reserved.



01

FLOOR PLAN - MECHANICAL

SCALE: 1/8" = 1'-0"

THE SEAL APPEARING ON THIS DOCUMENT WAS AUTHORIZED BY PAUL A. EASUM ON APRIL 14, 2010. ALTERATIONS OF A SEALED DOCUMENT WITHOUT PROPER NOTIFICATION TO THE RESPONSIBLE ENGINEER IS AN OFFENSE UNDER THE TEXAS ENGINEERING PRACTICE ACT.

PROJECT: City of Arlington - Traffic - 801 W. Main

ADDENDUM NO.: 1 SHEET: _____

PROJECT #: 010002 DATE: 4-14-10

REF. SHEET NO.: M1.00

**EASUM
ENGINEERING**

2740 State Hwy 276, Suite 100-02
Rockwall, Texas 75032
(972)234-9911

SDM1.0

