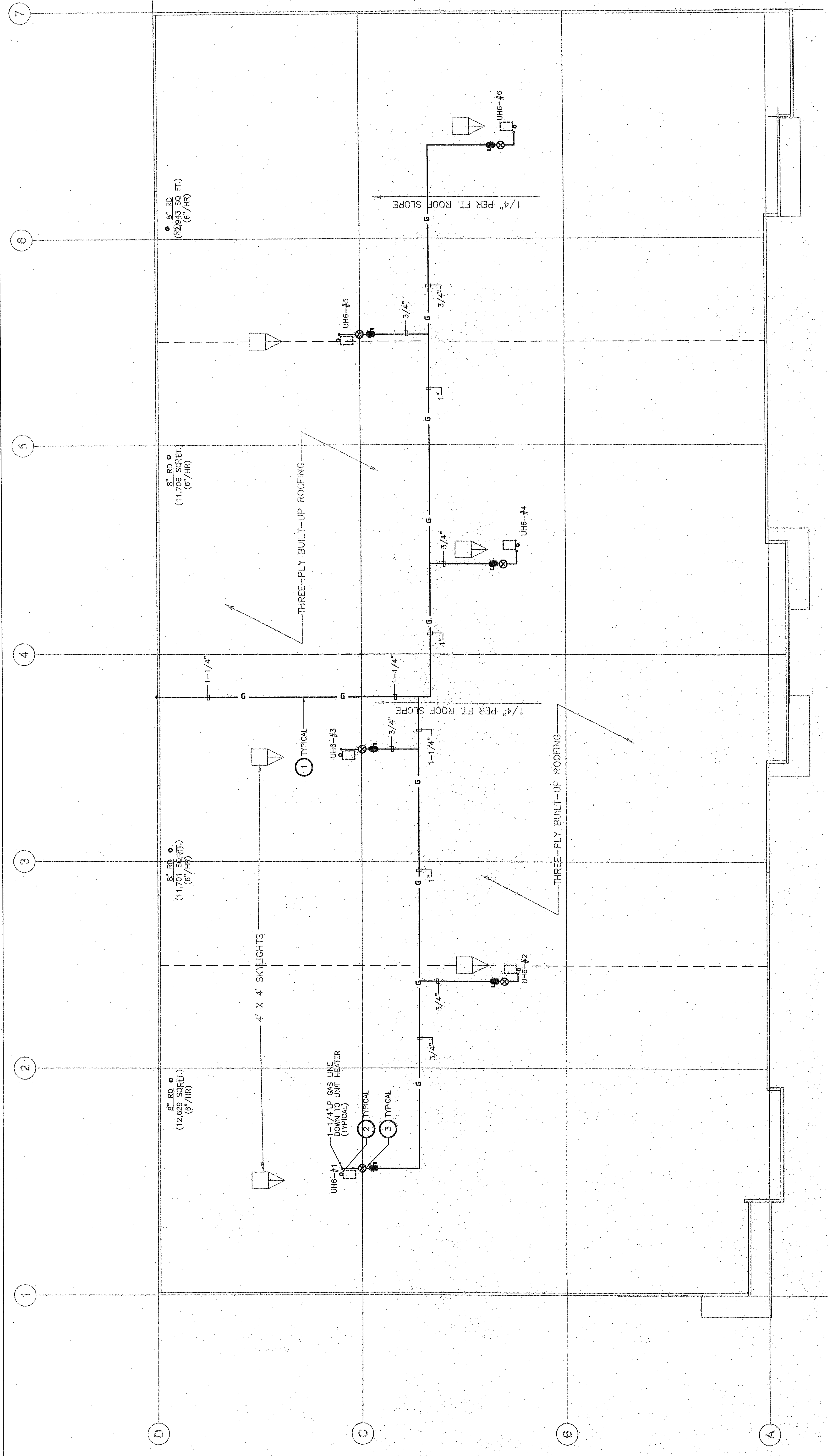


REVISIONS:

NO.	DESCRIPTION	DATE
1	CONSTRUCTION ISSUE	01/26/07

© COPYRIGHT 2006 - ALLIANCE ARCHITECTS




**KEYED NOTES:**

- 1 ALL GAS PIPING TO BE SUPPORTED ON PLASTIC PILLOW BLOCK PIPE STANDS AS MANUFACTURED BY MIRO INDUSTRIES.
- 2 UNIT HEATER POWER VENT FLUE THRU ROOF TO RAIN CAP.
- 3 MEDIUM PRESSURE GAS PRESSURE REGULATOR AND GAS COOK. REGULATE TO LOW PRESSURE LINE SIZE PRIOR TO ROOF PENETRATION DOWN TO UNIT HEATER BELOW ROOF.

**GENERAL NOTES:**

- A. ALL EQUIPMENT AND GAS PIPING SHALL BE PRIMED AND PAINTED PER DIVISION 9 SPECIFICATIONS.
- B. ALL GAS PIPING PENETRATIONS THRU ROOF SHALL UTILIZE A GOOSENECK HOOD PITCH PAN PIPE PENETRATION DEVICE PER ARCHITECTURAL DETAILS.

1 BUILDING 6 - MECHANICAL, ELECTRICAL & PLUMBING ROOF PLAN  
 SCALE: 3/32"=1'-0"

  
 M&O, Inc.  
 Mechanical & Electrical Engineers  
 4300 Spring Road  
 Suite 200  
 Dallas, Texas 75244  
 Tel: 972/238-5357  
 Fax: 972/238-5231  
 www.m-o-inc.com  
 © 2006  
 PM JOB NO. 06039.000  
 ALL RIGHTS RESERVED. NO PART OF THIS DRAWING IS TO BE REPRODUCED OR TRANSMITTED IN ANY FORM OR BY ANY MEANS WITHOUT THE WRITTEN PERMISSION OF M&O, INC.

