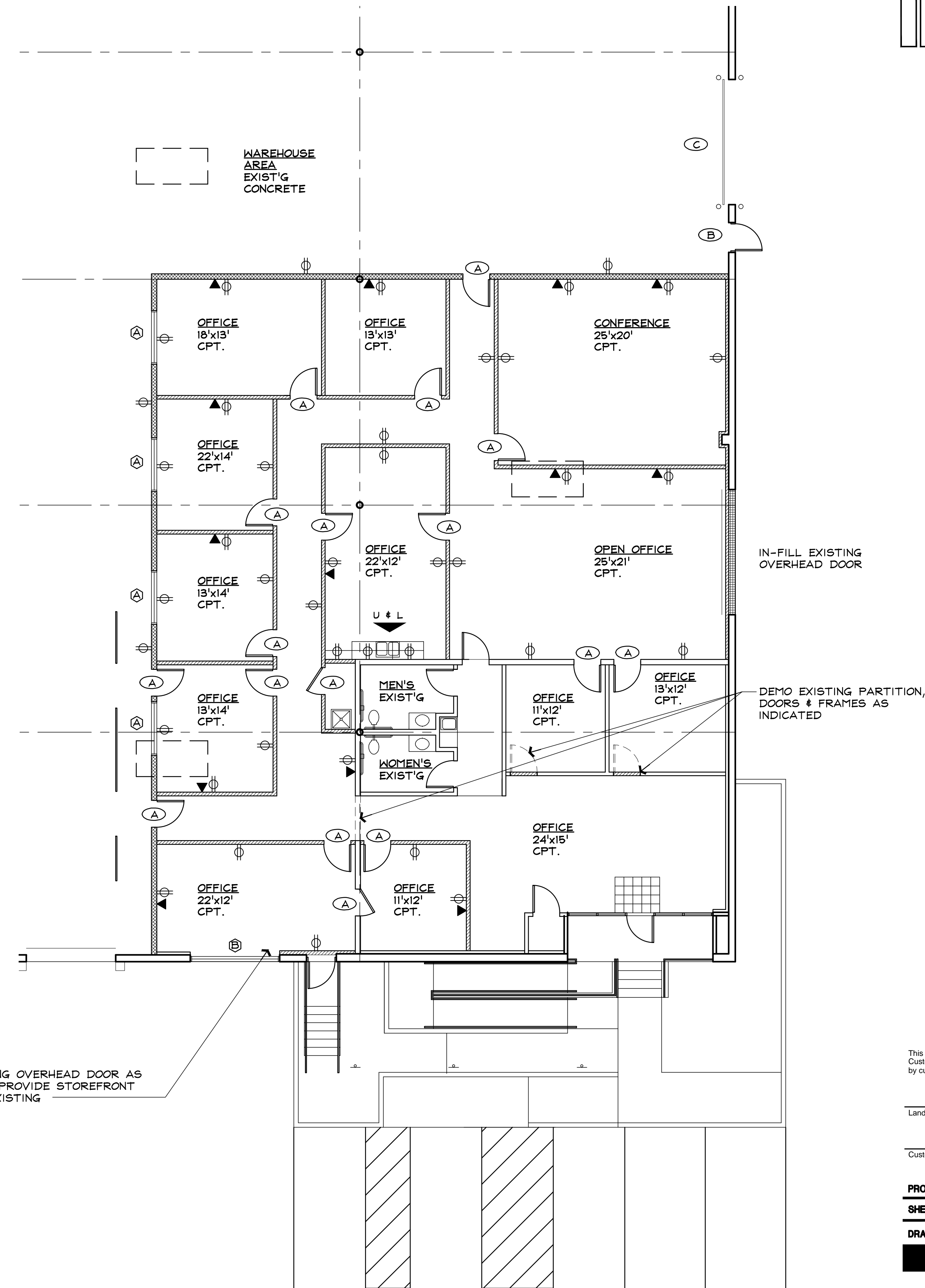


02 PRODUCTION OFFICE PLAN
 1/8" = 1'-0"



03 MAIN OFFICE PLAN
 1/8" = 1'-0"

- NEW DRYWALL FURRING @ CONCRETE WALL PANEL
 3 #1 METAL STUDS @ 24" O.C. TO 6" ABOVE CEILING W/ R-II BATT INSULATION AND 1/2" GYP. BD. @ FINISHED SIDE.
- TYPICAL NEW INTERIOR PARTITION
 3 #1 METAL STUDS @ 24" O.C. TO BOTTOM OF CEILING W/ 1/2" GYP. BD. BOTH SIDES (U.N.O.).
- TYPICAL ACOUSTICAL PARTITION
 3 #1 METAL STUDS @ 24" O.C. TO 6" ABOVE CEILING W/ 1/2" GYP. BD. BOTH SIDES W/ SOUND INSULATION. PROVIDE ADEQUATE PLUMBING CHASE TO ACCOMMODATE FIXTURES

- OFFICE/WAREHOUSE/DEMISING PARTITION
 6"-20 GA. (DESIGN MUST MEET L/240 DEFLECTION CRITERIA) METAL STUDS @ 24" O.C. TO DECK ABOVE W/ 1/2" GYP. BD. BOTH SIDES. SECURE W/ 3" DEEP EXPANSION TRACK (GYP. BD. ON OFFICE SIDE TO EXTEND 1'-0" ABOVE CEILING). PROVIDE STRAPS AT 48" O.C. VERTICALLY SPACED ABV. OFFICE CEILING TO PREVENT STUD ROTATION. PROVIDE R-II BATT INSULATION TO DECK ABOVE BRACE WALL TO STRUCTURE @ ±20' A.F.F. ABOVE OFFICE AREA. PROVIDE GYP. BOARD CONTROL JOINTS AT 30' O.C. OR COLUMN LOCATIONS.
- OVERHEAD DOOR INFILL
 8" FULLY REINFORCED CMU W/ BLOCK FILLER AND FINISHED TO MATCH ADJACENT CONDITION

- ⊕ GENERAL PURPOSE DUPLEX OUTLET (MTD. @ 15' A.F.F. U.N.O.)
- ⊕ GENERAL PURPOSE FOURPLEX OUTLET (MTD. @ 15' A.F.F. U.N.O.)
- ▼ TELEPHONE, DATA/PRINTER OUTLET
- CEILING MOUNTED JUNCTION BOX, POWER & DATA - POWER POLE LOCATION

BLUE RIBBON IMPROVEMENTS
NORTHGATE DISTRIBUTION CENTER 6
 11441 HILLGUARD ROAD
 DALLAS, TEXAS

This drawing has been reviewed and approved by Landlord and Customer as indicated by signatures below. All changes made by customer after date of signature are at Customer's expense.

Landlord _____ Date _____
 Customer _____ Date _____

PROJECT NO. XX-XXX

SHEET TITLE:

DRAWN BY: _____ CHECKED BY: _____



2310 LBJ Freeway, Suite 20C
 Dallas, Texas 75234
 Phone: 972-884-9292
 Fax: 972488-9848

PRICING - NOT FOR CONSTRUCTION