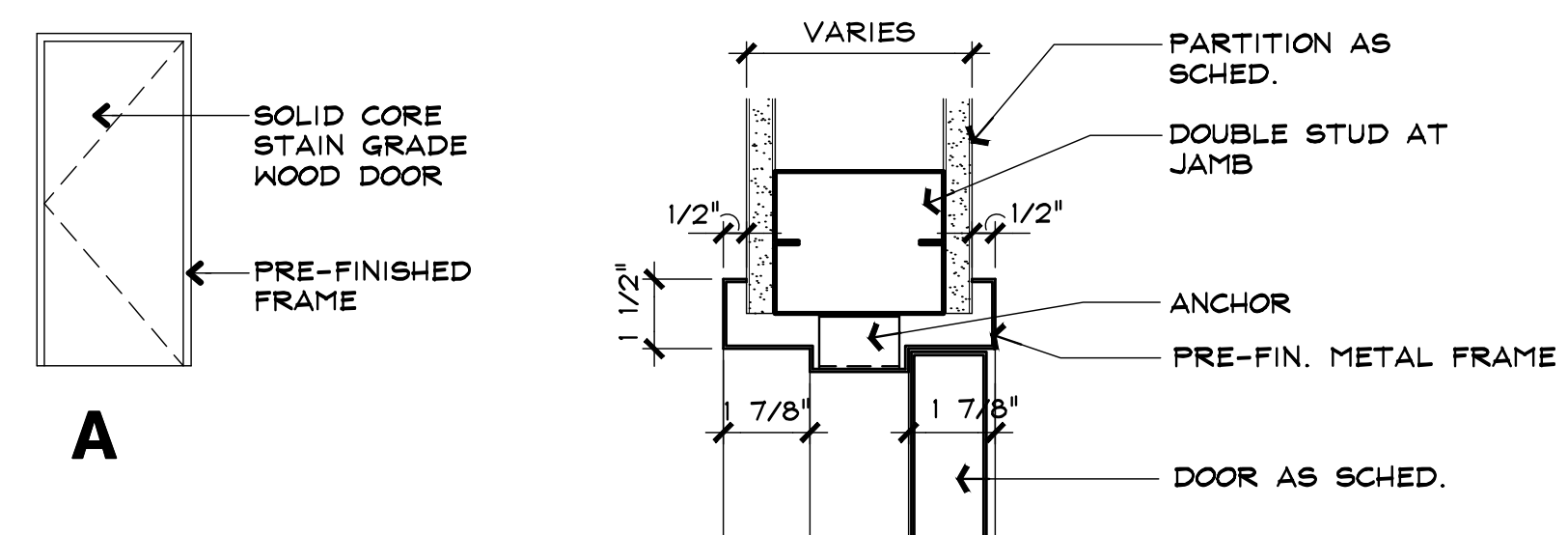
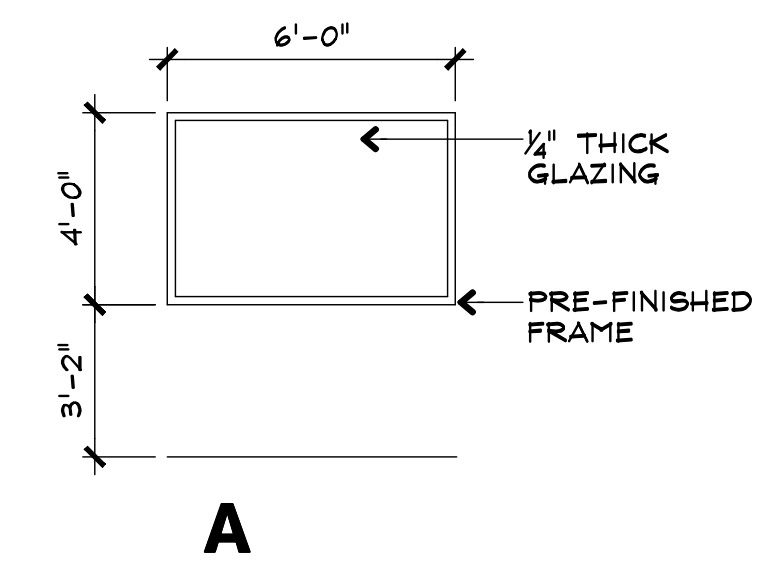


ROOM FINISH SCHEDULE																
ROOM #	ROOM NAME	FLOOR	BASE	WALL REFERENCE MATERIAL KEYS				CEILING		MILLWORK			DOORS		REMARKS	
				NORTH	EAST	SOUTH	WEST	HEIGHT	MATERIAL	MILLWORK	COUNTER	WINDOWS	DOOR	FRAME		
101	OPEN OFFICE	A/U	C/U	K/N	K	K/U	U						M	V/U	W/U	
102	OFFICE	U	U	U	U	U	U							U	U	
103	OFFICE	U	U	U	U	U	U							U	U	
104	OFFICE	U	U	U	U	U	U							U	U	
105	BREAK ROOM	U	U	U	U	U	U							U	U	
106	CORRIDOR	B/U	C/U	U	K	K	K							U	U	
107	MEN'S RR	U	U	U	U	U	U							U	U	
108	WOMEN'S RR	U	U	U	U	U	U							U	U	
109	TOILET	U	U	K	K	U	U							V	W	
110																
111	ELECTRICAL	U	H	U	K	K	U							V	W	
112	OFFICE	A	C	K	K	K	K							V	W	
113	OFFICE	A	C	K	K	K	K							V	W	
114	OFFICE	B	C	K	K	K	K							V	W	
115	STORAGE	A	C	K	K	K	K							V	W	
116	OFFICE	A	C	K	K	K	K							V	W	
117	OFFICE	B	C	K	K	K	K							V	W	
118	OFFICE	A	C	K	K	K	K							V	W	
119	WILL CALL	U	H	U	U	L	L							V	U	
120																
121	WAREHOUSE	U	H	L	U	U	L							U	U	
114																

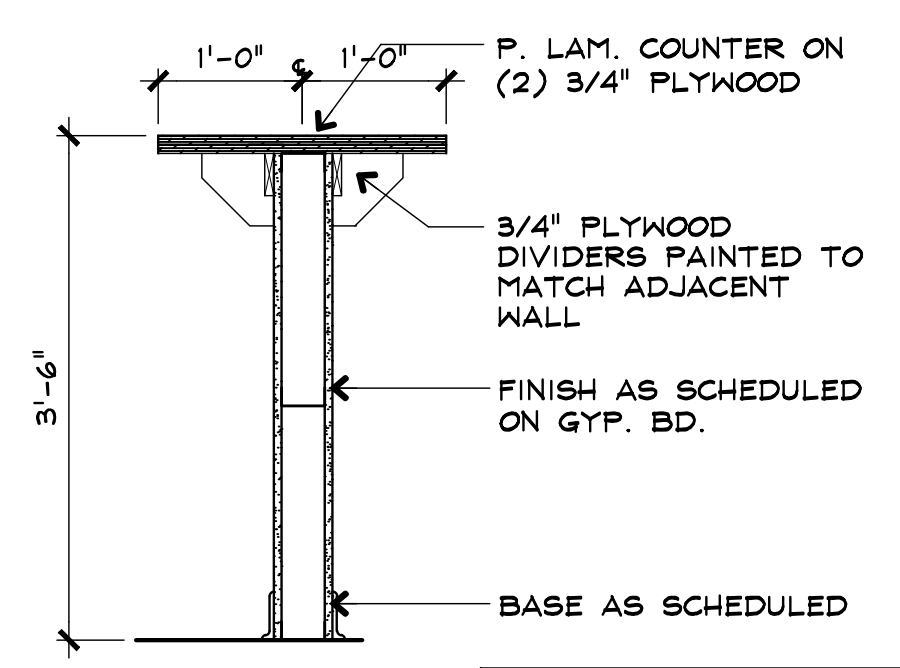
DOOR SCHEDULE										
DOOR MARK	SIZE (FRAME OPENING)	THICKNESS	TYPE	FRAME DETAILS				HARDWARE SET	UL LABEL	REMARKS
				TYPE	HEAD	HEAD	JAMB			
101	3'-0" X 7'-0"	1 3/4"	A	PRE-FIN				1		CLOSER & SWEEP
102	EXISTING									
103	EXISTING									
104	EXISTING									
105	EXISTING									
106	EXISTING									
107	EXISTING									
108	EXISTING									
109	3'-0" X 7'-0"	1 3/4"	A	PRE-FIN				3		
110	NOT USED									
111	3'-0" X 7'-0"	1 3/4"	A	PRE-FIN				2		
112	3'-0" X 7'-0"	1 3/4"	A	PRE-FIN				1		
113	3'-0" X 7'-0"	1 3/4"	A	PRE-FIN				1		
114	3'-0" X 7'-0"	1 3/4"	A	PRE-FIN				1		CLOSER & SWEEP
115	3'-0" X 7'-0"	1 3/4"	A	PRE-FIN				2		
116	3'-0" X 7'-0"	1 3/4"	A	PRE-FIN				1		
117	3'-0" X 7'-0"	1 3/4"	A	PRE-FIN				1		CLOSER & SWEEP
118	3'-0" X 7'-0"	1 3/4"	A	PRE-FIN				1		
	3'-0" X 7'-0"	1 3/4"								

MATERIAL KEY	
A	CARPET-MATCH EXISTING
B	VCT
C	RUBBER COVE BASE-MATCH
D	NOT USED
E	NOT USED
F	NOT USED
G	NOT USED
H	WOOD BASE-1 X 6 PAINTED
J	GYP. BD.-TAPE ONLY
K	GYP. BD. TAPE,BED,TXT. & PT.
L	GYP. BD. - TAPE, BED & PT.
M	MINI BLINDS
N	GLASS STOREFRONT
P	EXIST'G. ACOUSTICAL TILE
Q	2X4 ACOUSTICAL TILE-MATCH
R	FRP - 4" HIGH
S	NOT USED
T	PLASTIC LAMINATE
U	EXISTING CONDITION
V	PRE-FIN. STAINED WOOD
W	METAL - PREFINISHED

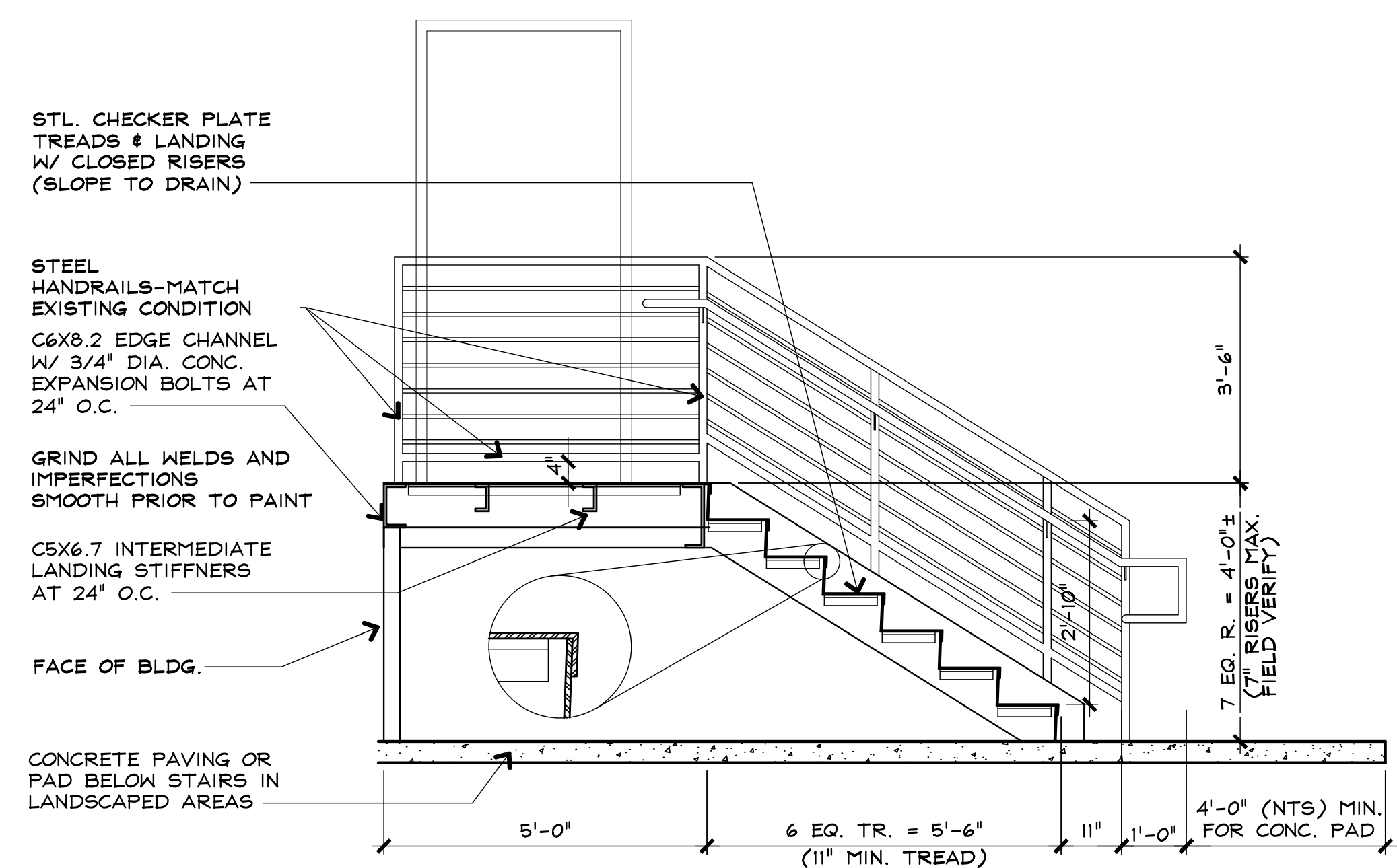
HARDWARE KEY	
1	LOCKSET
2	PASSAGE
3	PRIVACY SET
4	PUSH/PULL



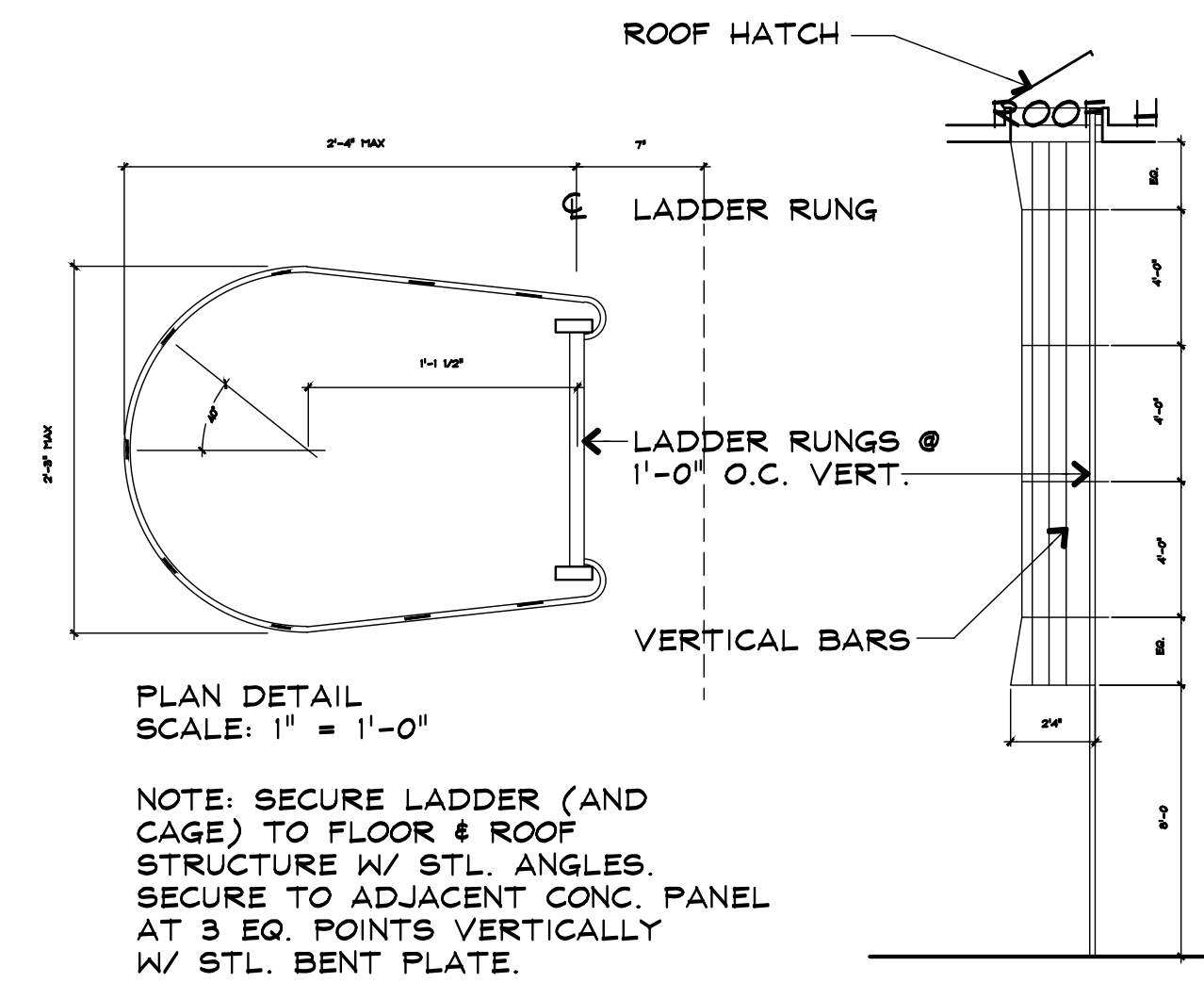
01 HEAD/JAMB DETAIL
 SCALE: 3" = 1'-0"



02 COUNTER SECTION
 Scale: 3/4" = 1'-0"



03 STEEL STAIR SECTION
 Scale: 1/2" = 1'-0"



04 ROOF LADDER & CAGE
 Scale: 3/16" = 1'-0"

This drawing has been reviewed and approved by Landlord and Customer as indicated by signatures below. All changes made by customer after date of signature are at Customer's expense.

Landlord _____ Date _____
 Customer _____ Date _____

PROJECT NO. XX-XXX
 SHEET TITLE _____
 DRAWN BY: _____ CHECKED BY: _____



2310 LBJ Freeway, Suite 200
 Dallas, Texas 75234
 Phone: 972-884-9292
 Fax: 972-488-9848

ADEPT IMPROVEMENTS
STEMMOONS INDUSTRIAL CENTER 10
 308 WEST MOCKINGBIRD LANE
 DALLAS, TEXAS